

# SignEditor Brief Manual

## 1. Install Software

Software Download link: <http://www.panel-e.com/en/downloads.aspx>

Software Name: SignEditor\_V433\_Green

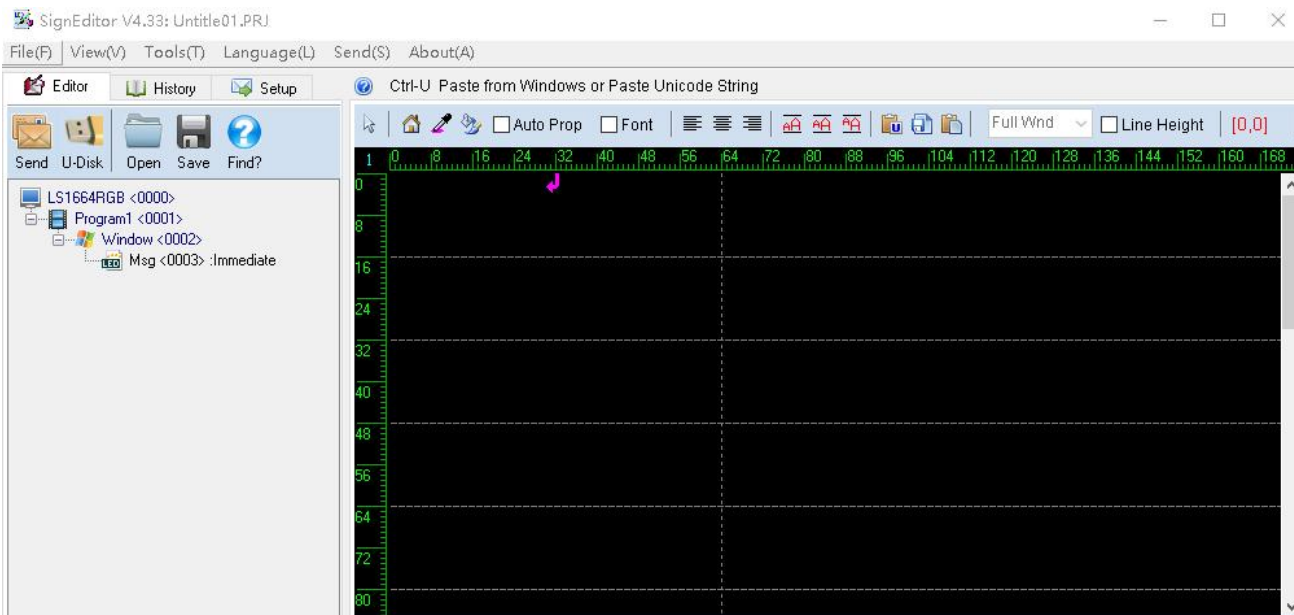
After download, Unzip the file, click the "SignEditor" can open the software directly.

You can also choose the "SignEditor" click right button send it to desktop shortcut.

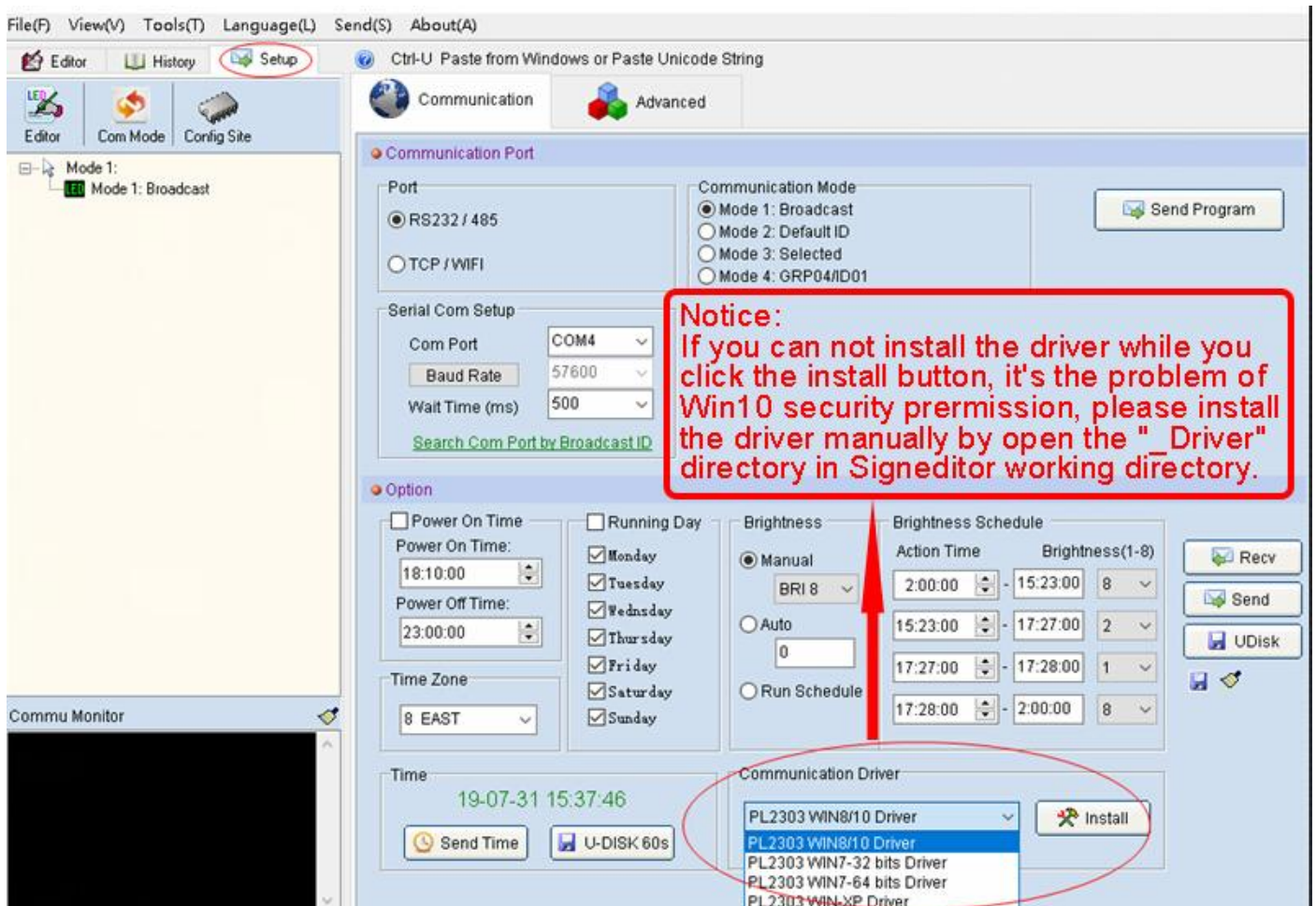
SignEditor 2018/12/10 3:03 应用程序 3,716 KB

## 2. Software Operate

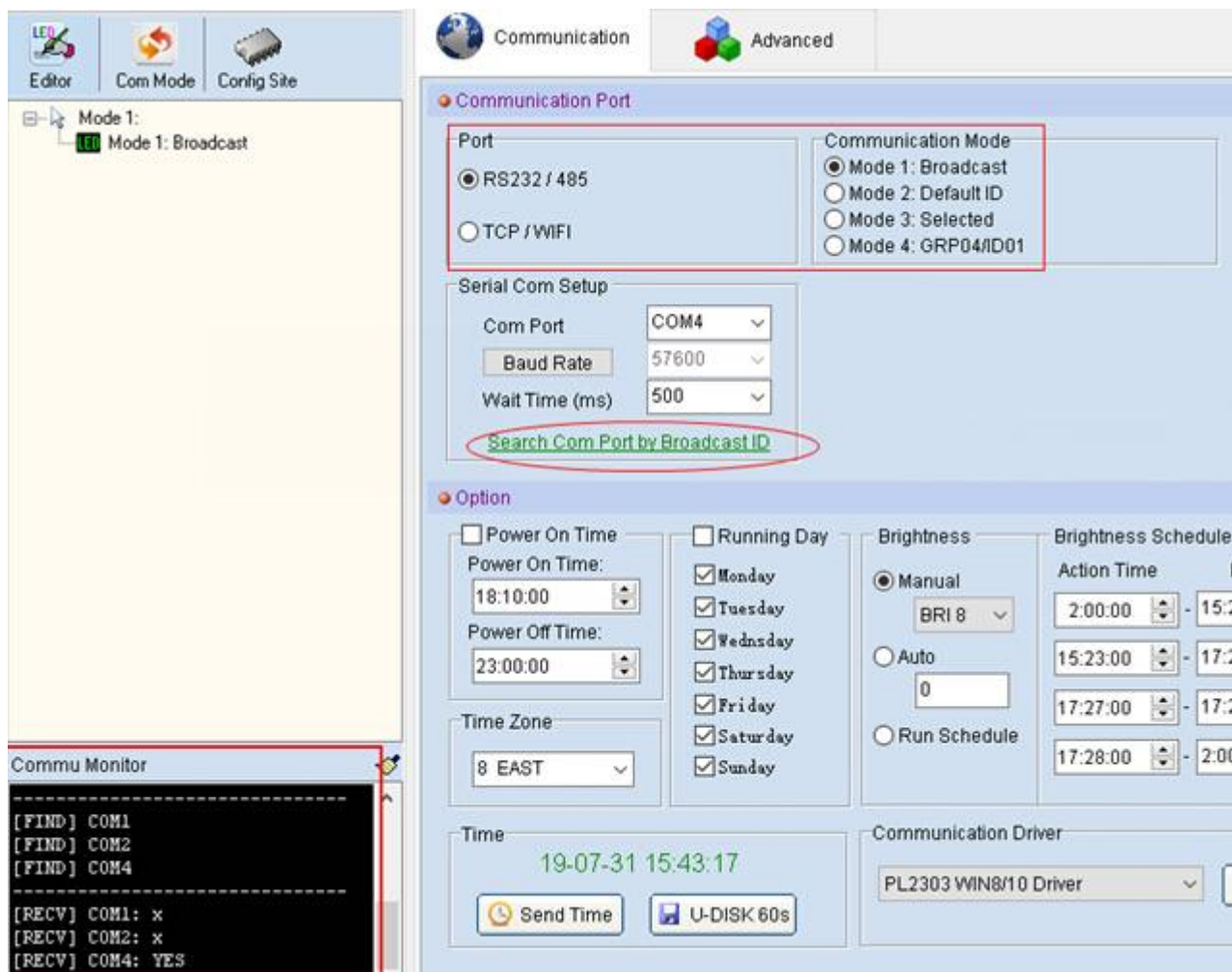
Open the software, the SignEditor software interface like below:



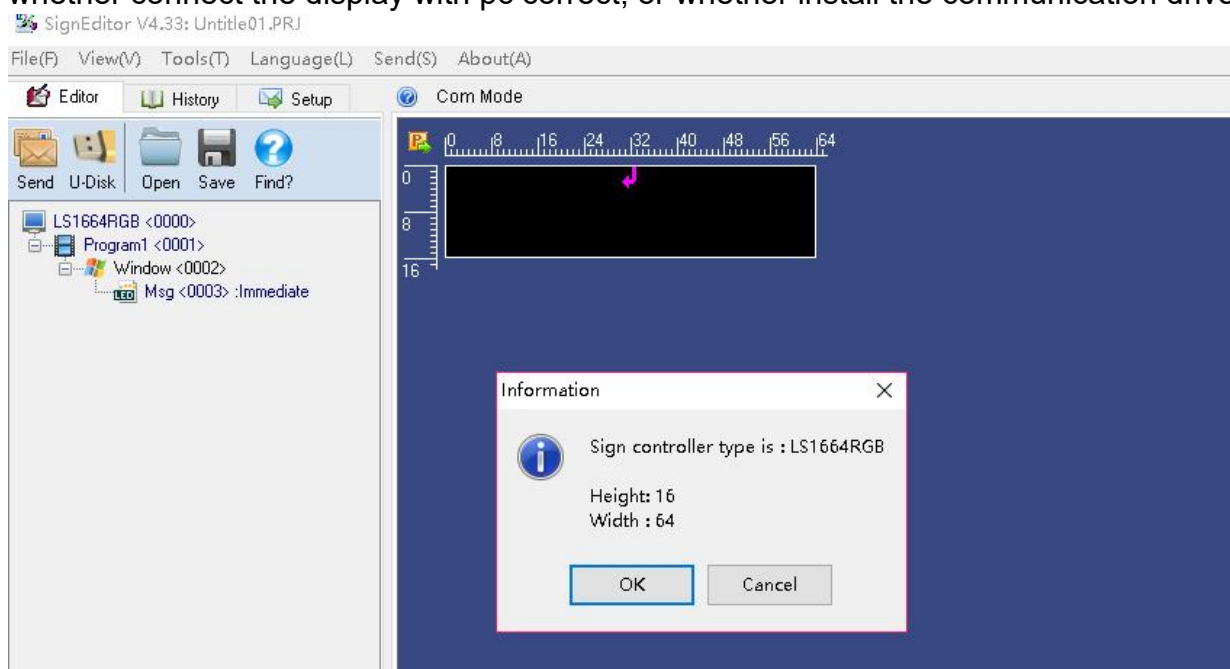
If the first time use this software, Click Setup then choose to install the communication driver.



After Install the communication driver ready, Connect the led display with computer, Set the communication port in RS232/RS485(USB/RS232/RS485 communication), Communication mode choose Mode 1: Broadcast. Click “Search Com Port by Broadcast ID” then will find the com port.

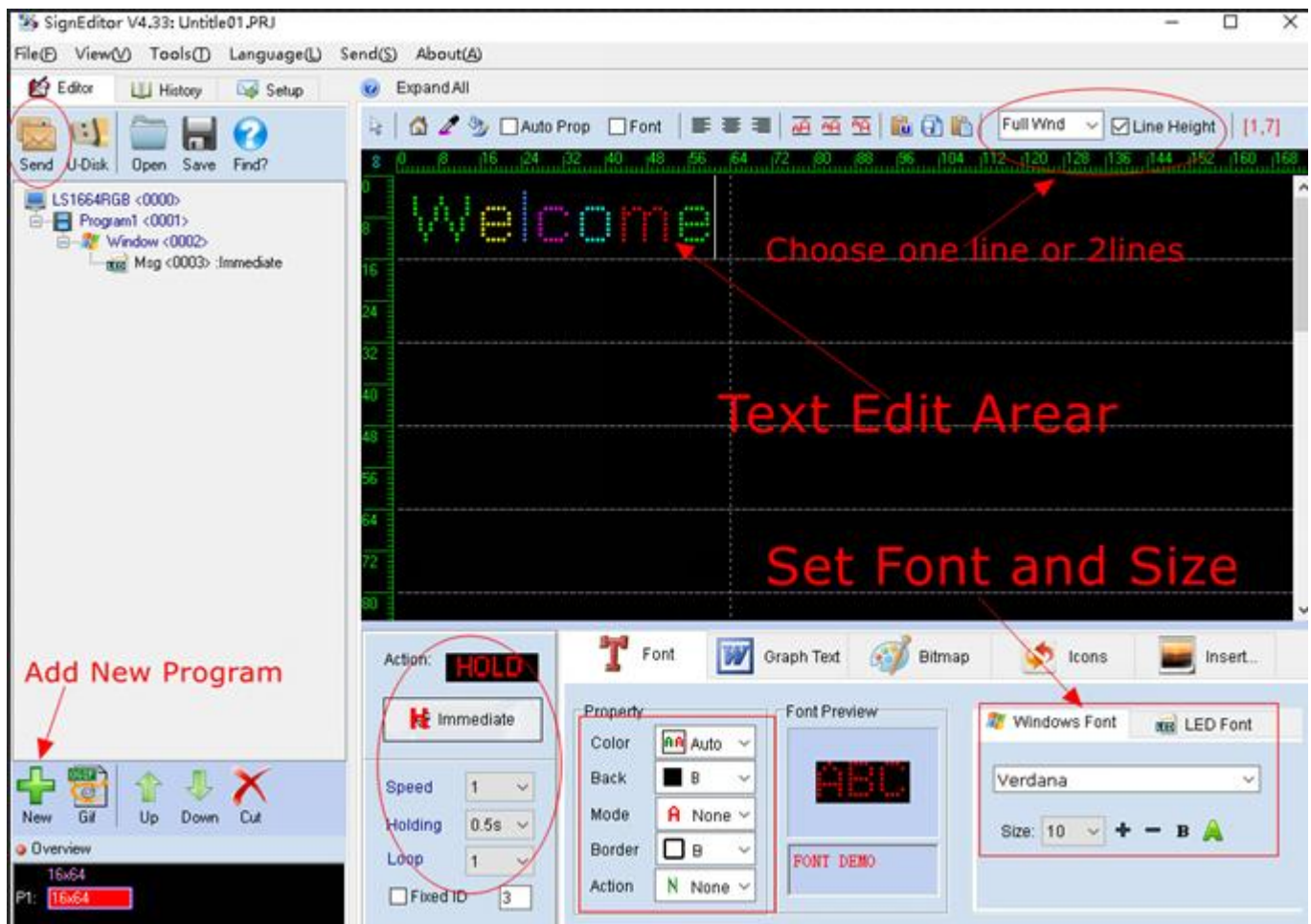


After find the COM port, back to SignEditor interface, click”Find?” will show the sign type. If couldn't find the com port, pls open computer Device Manager to see Com port. If not, pls check whether connect the display with pc correct, or whether install the communication drive success.



Then you can type the programs and send to display.

You can choose the Color, Action, Speed, Font Type and Size etc.  
After that click send to display.



If any problem. Pls contact salesman. Thanks for your time !