

# RDworks Ethernet and wifi PC Connection / Daniel

## CONNECTION THROUGH A WIRELESS ROUTER AND ETHERNET CABLE

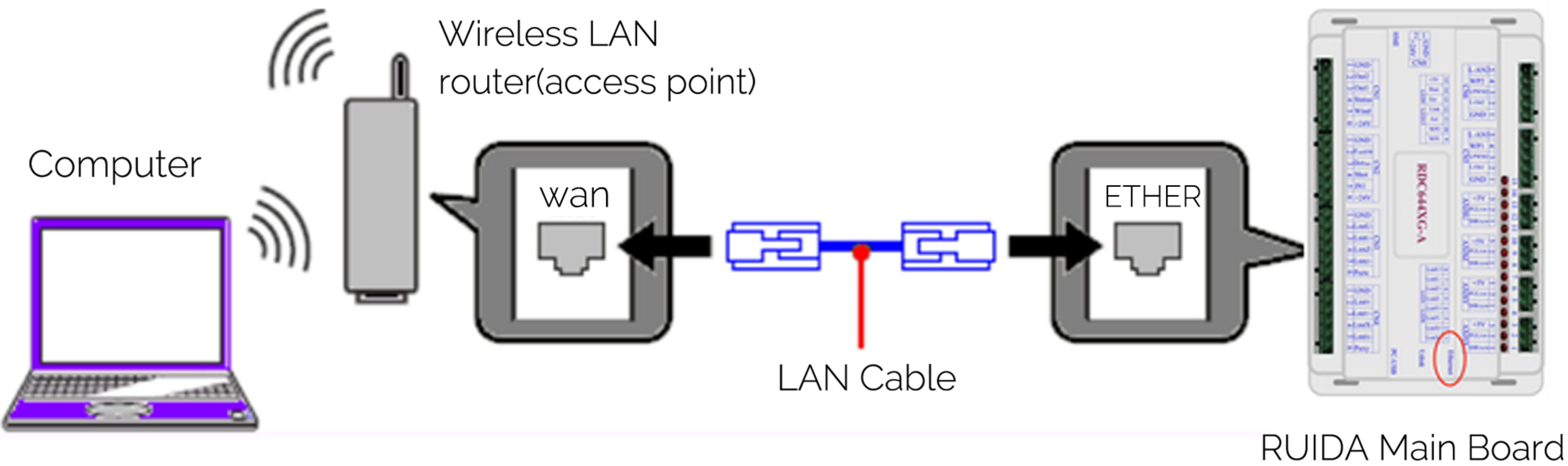
For this connection, you need a wireless router that allows you to route the computer and the Ethernetconnection of the RuitLa boardl

### STEP 1

Connect the computer to the router through the wi-Fi connection by entering the router password and username

### STEP 2

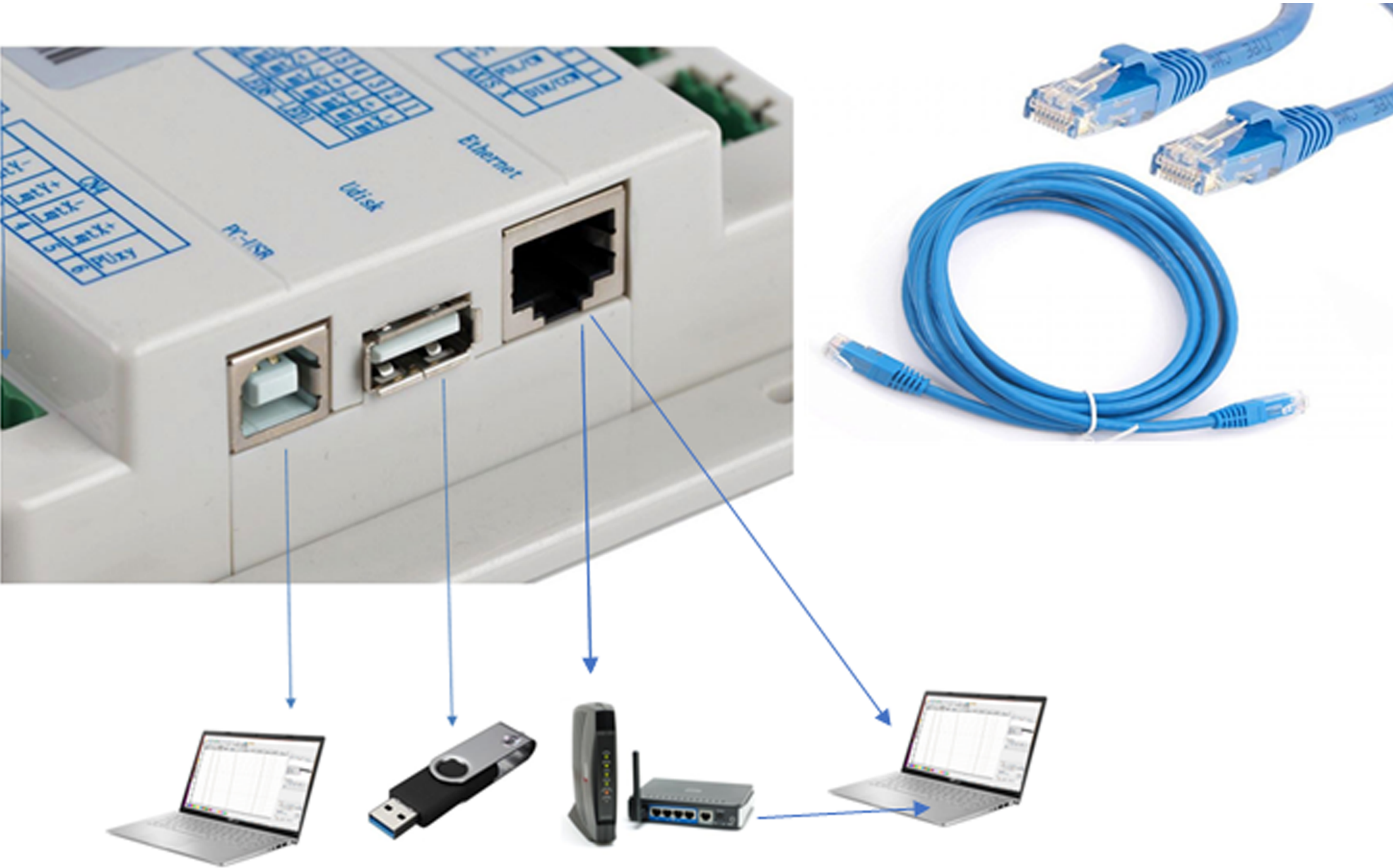
Connect one end of the UTP network cable to the Ethernet connection of the Ruida card and the otherend to any LAN port of the router (not the internet input port) as shown in the following figure



Once you have the connection of our CO2 Cutting and Engraving Equipment that has a Ruidacontroller board through the Ethernet connection with an Ethernet Network cable with an RJ45connector proceed to configure the IP Address







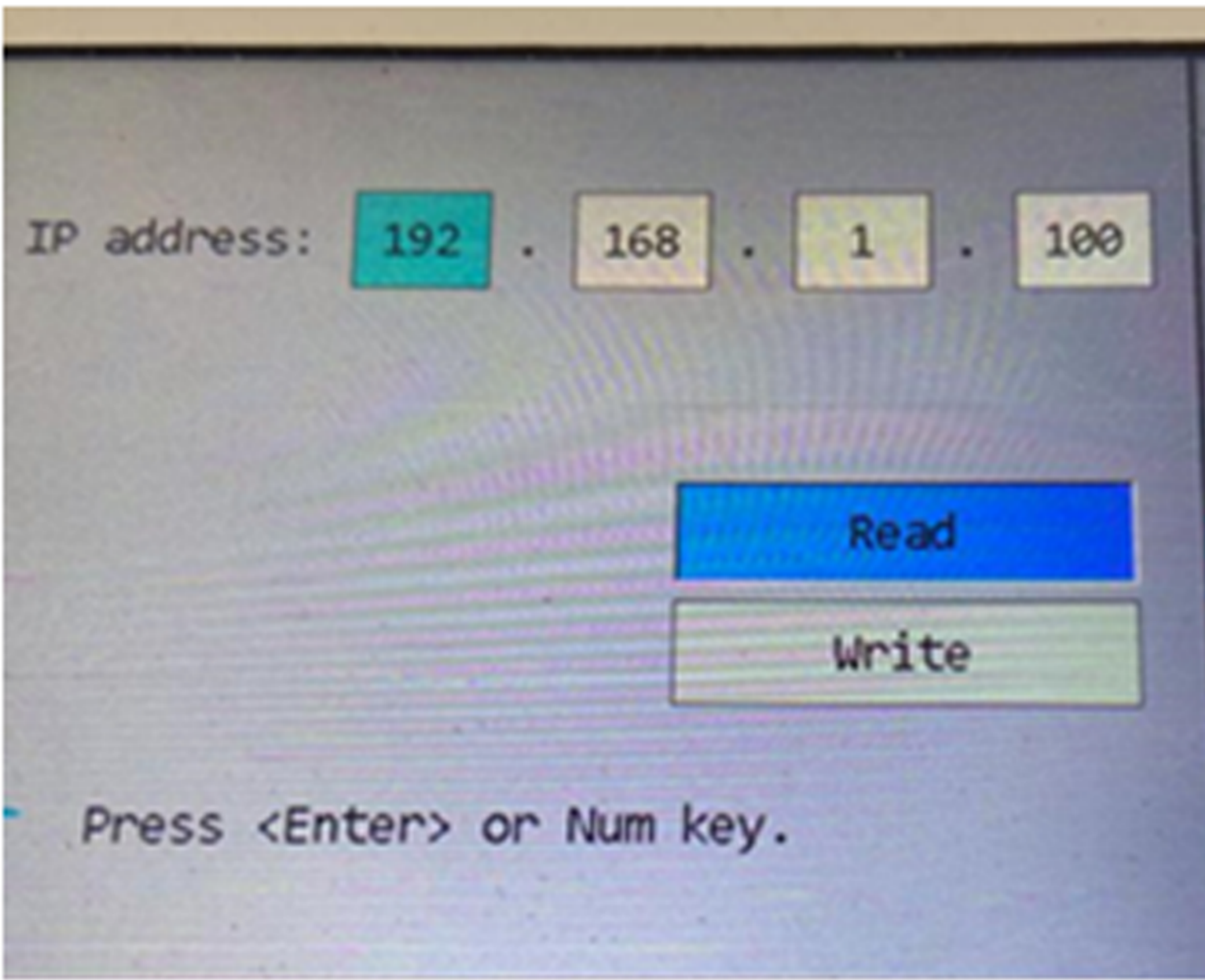
# STEP 3

Enter the configuration of the controller board on the operation panel and set the IP Address:192

<https://bescutter.zohodesk.com/portal/en/kb/articles/rdworks-ethernet-and-wifi-connection-daniel>







## STEP 4

we proceed to ping the address of the machine to see if there is a reply, open the DOS console by presAnd put ping 192.168.1.100 and hit enter

Enter the configuration of the controller board on the operation panel and set the IP Address:192

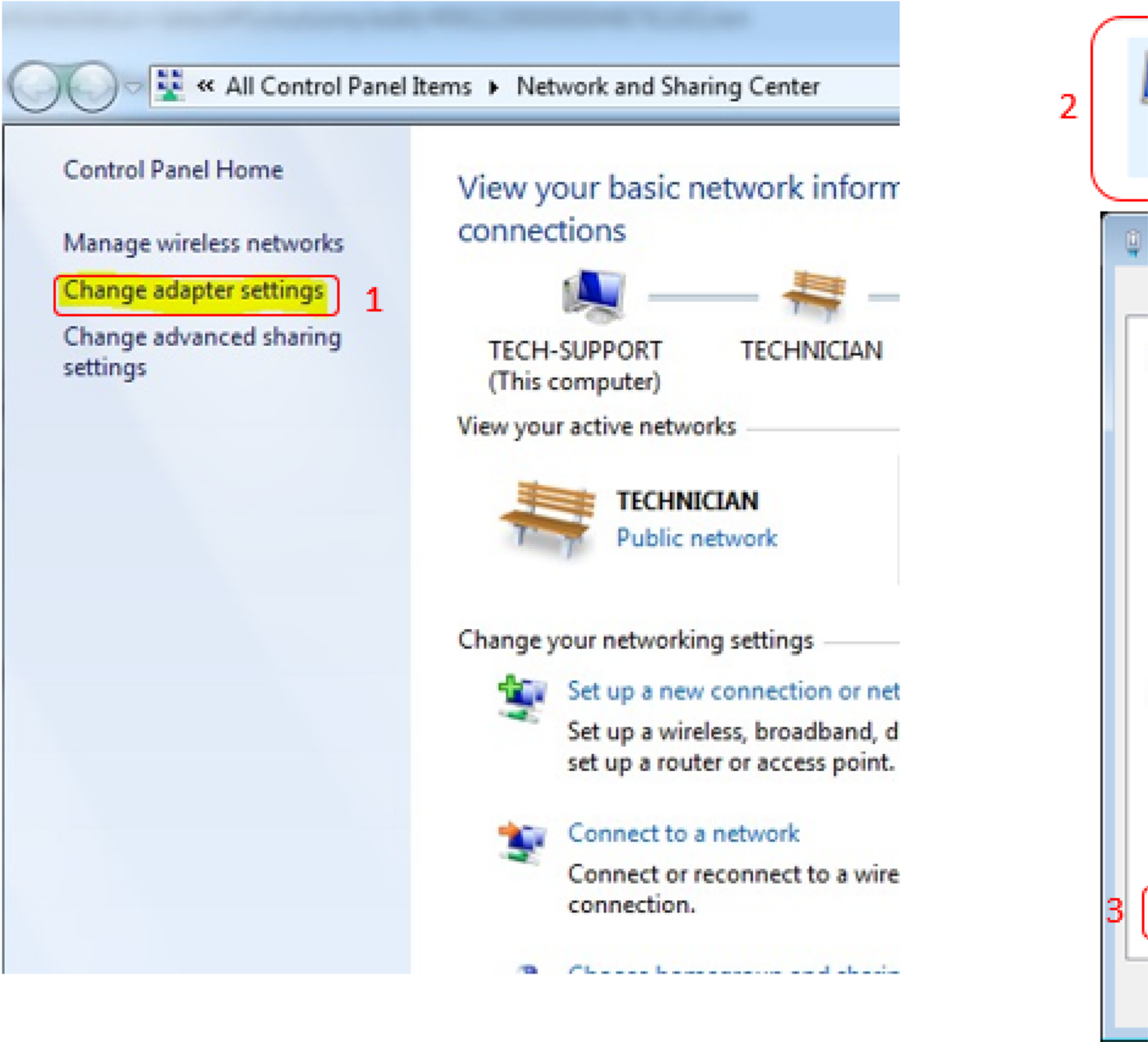
<https://bescutter.zohodesk.com/portal/en/kb/articles/rdworks-ethernet-and-wifi-connection-daniel>





To change the IP, do the following procedure:

1. Go to control panel / Network and Internet / Network and Sharing Center/ configure the connection

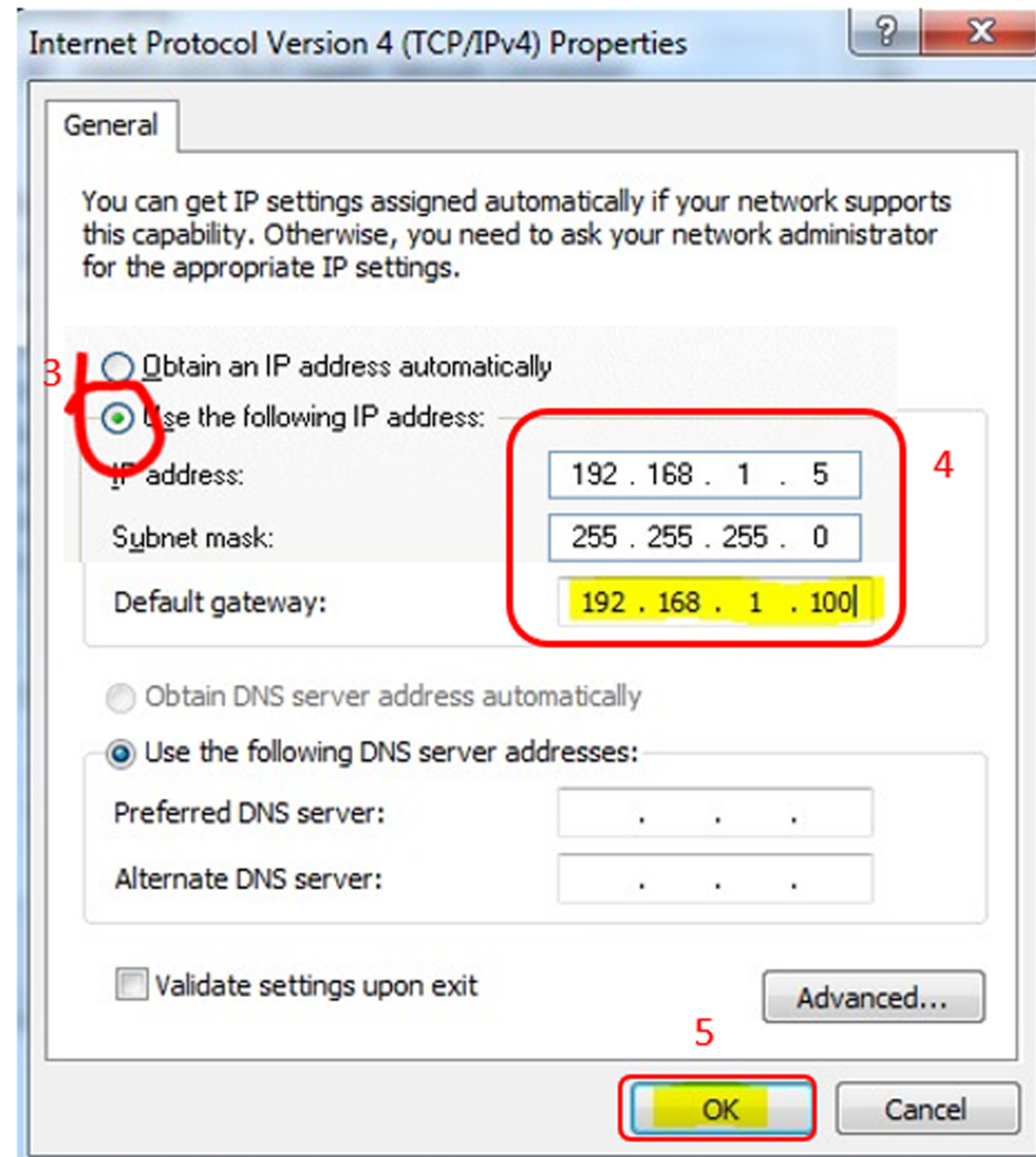
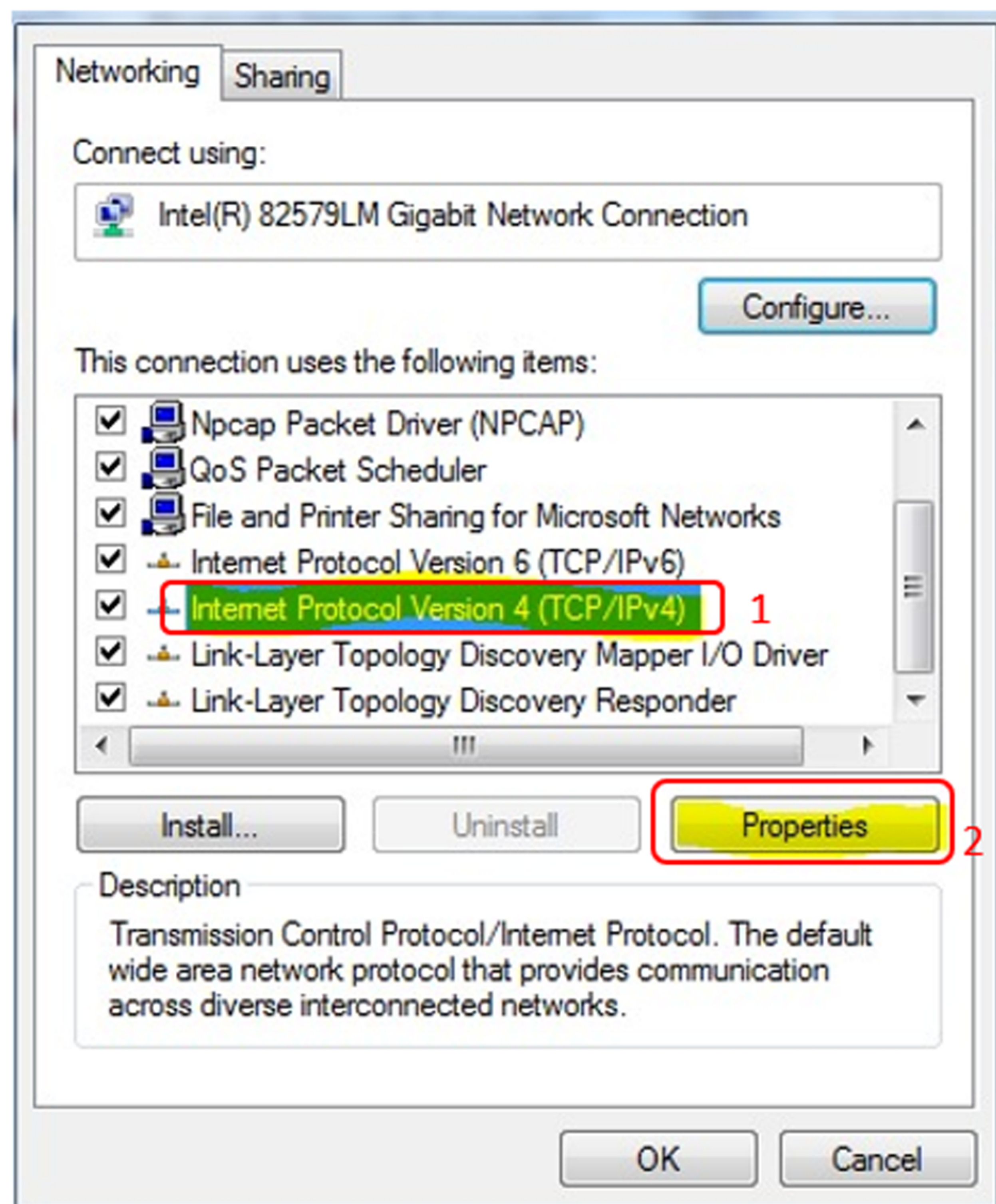


- 2 . Set the same router address as an example you can set without generating IP conflict in (TCP / IP)  
 IP address: 192.168.1.5  
 Subnet mask: 255.255.255.0  
 Default gateway: 192.168.1.100

<https://bescutter.zohodesk.com/portal/en/kb/articles/rdworks-ethernet-and-wifi-connection-daniel>







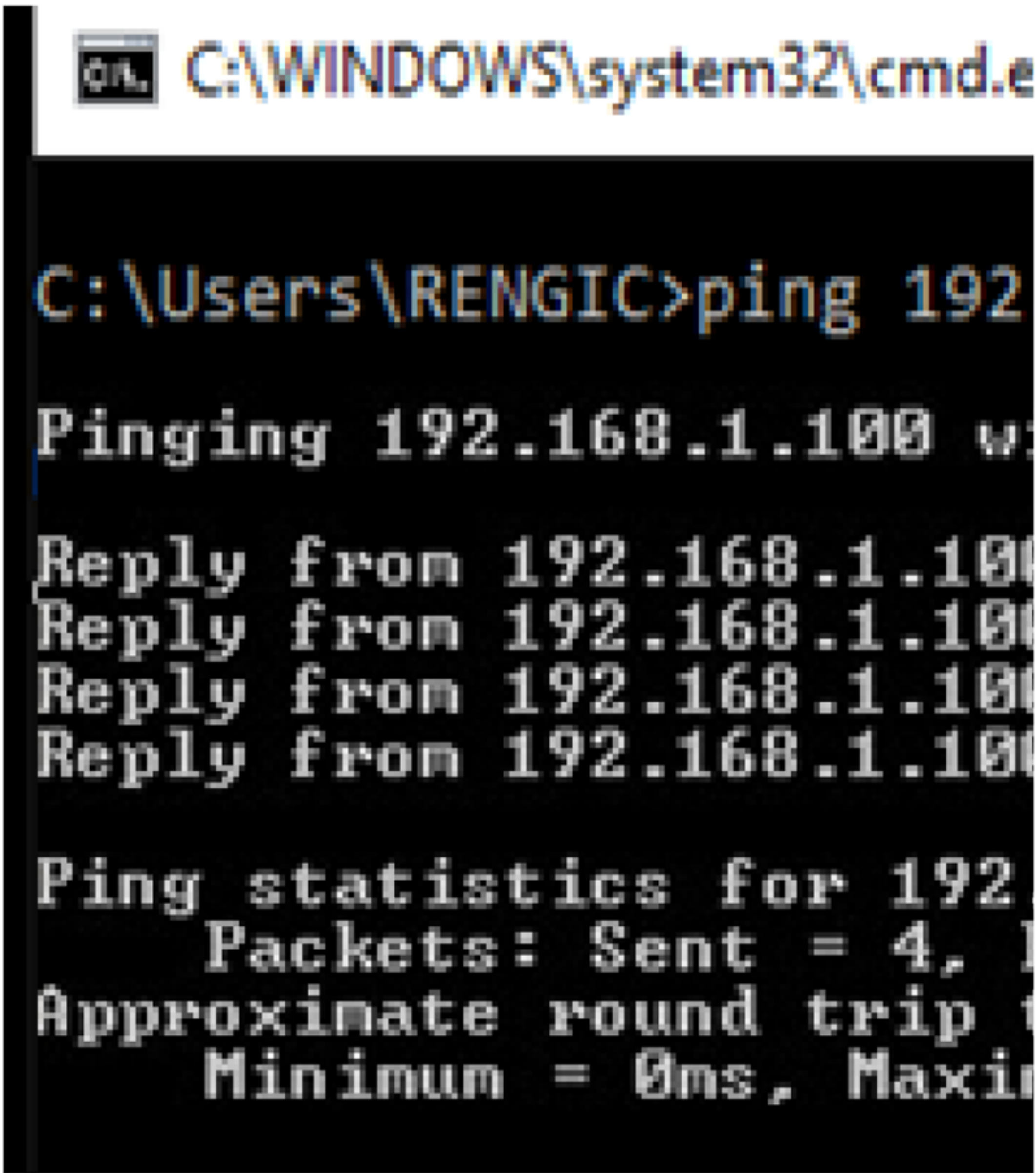
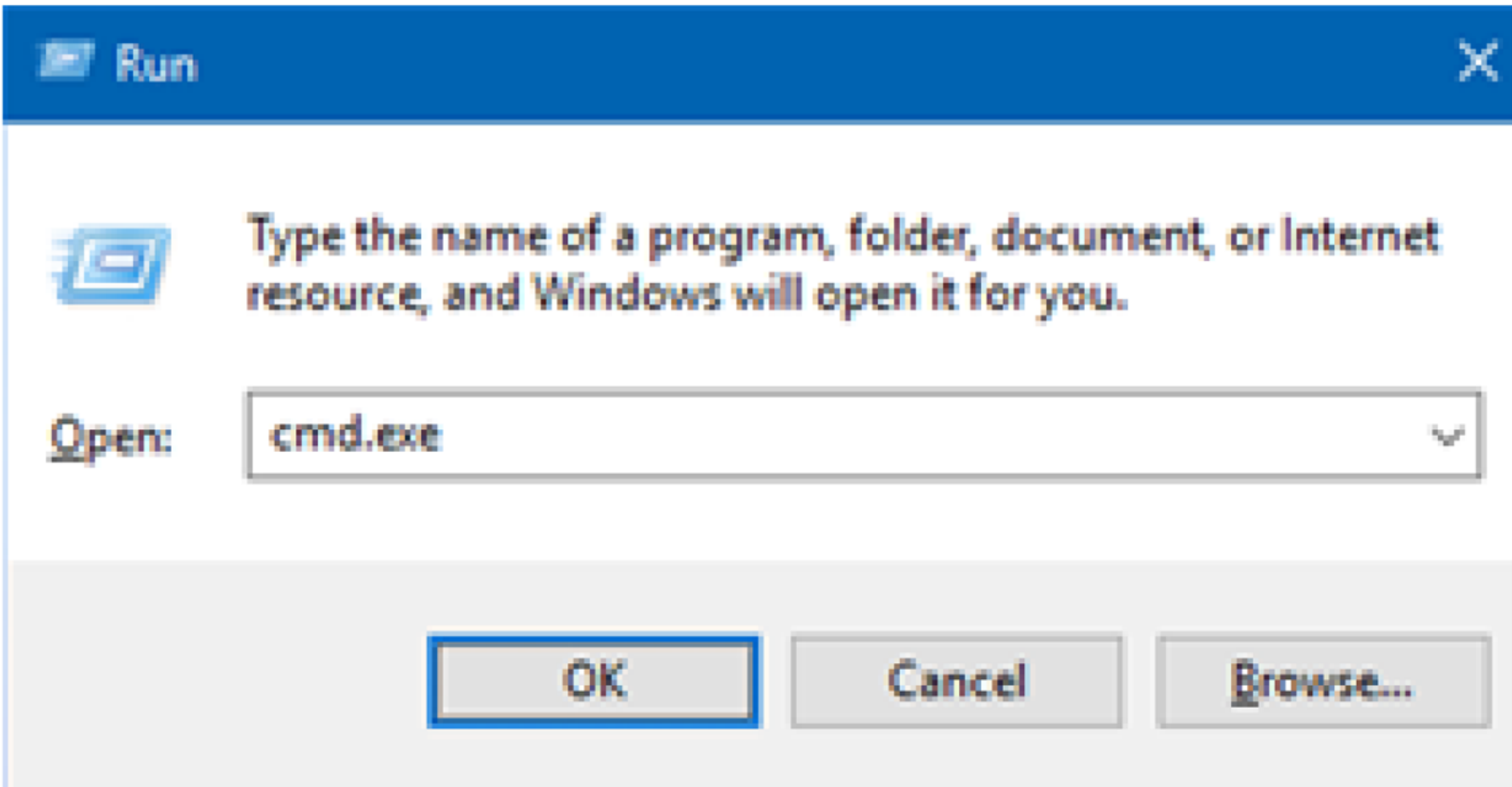
## STEP 6

Once the Static IP address is configured, we proceed to ping the address of the machine to see if thervnd put ping 192.168,1.100 and hit enter

<https://bescutter.zohodesk.com/portal/en/kb/articles/rdworks-ethernet-and-wifi-connection-daniel>







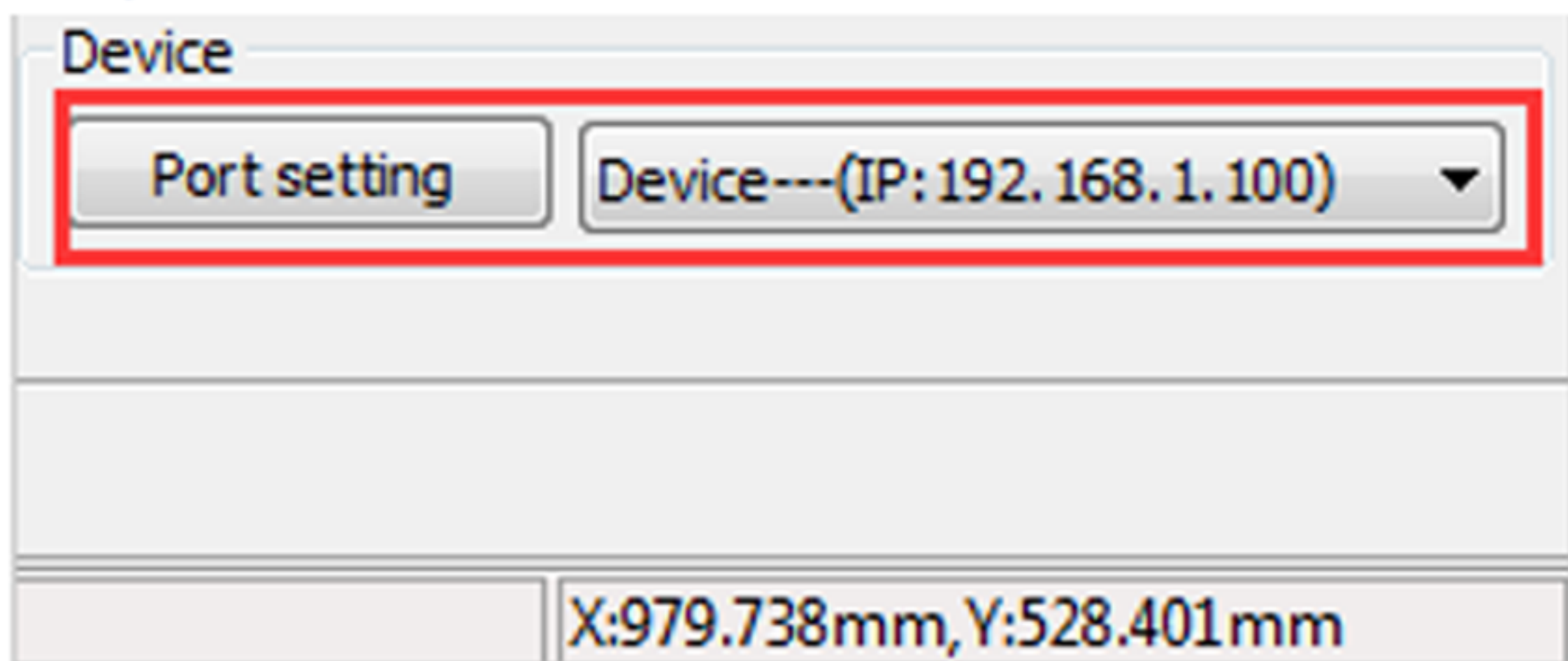
# STEP 7

Once the pinging has a reply, the configuration is started in the RDWorks program, in the process conthe Ruida board should appear in the box and finish by clicking OK

<https://bescutter.zohodesk.com/portal/en/kb/articles/rdworks-ethernet-and-wifi-connection-daniel>







Once the configuration of the board is finished, you will have communication between the software al

<https://bescutter.zohodesk.com/portal/en/kb/articles/rdworks-ethernet-and-wifi-connection-daniel>