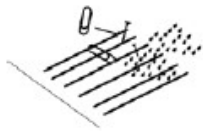


# **HWQ Series Cutting Plotter User Manual**

# Contents

1. Safety precautions .....	1
2. Standard accessory.....	2
3. Assemble cutting plotter: .....	3
4. Install USB driver .....	6
5. Use SD card .....	10
6. Install Flexi software:.....	11
7. Operate Flexi software.....	15
8. Install Coreldraw plug-in(Cuttool).....	22
9. Operate Coreldraw plug-in(Cuttool).....	24

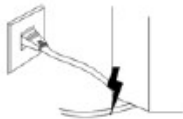
## 1. Safety precautions



No leaking any liquid into plotter



Don't touch top of cutting blade



Use power cable correctly, no bend.



No lean.

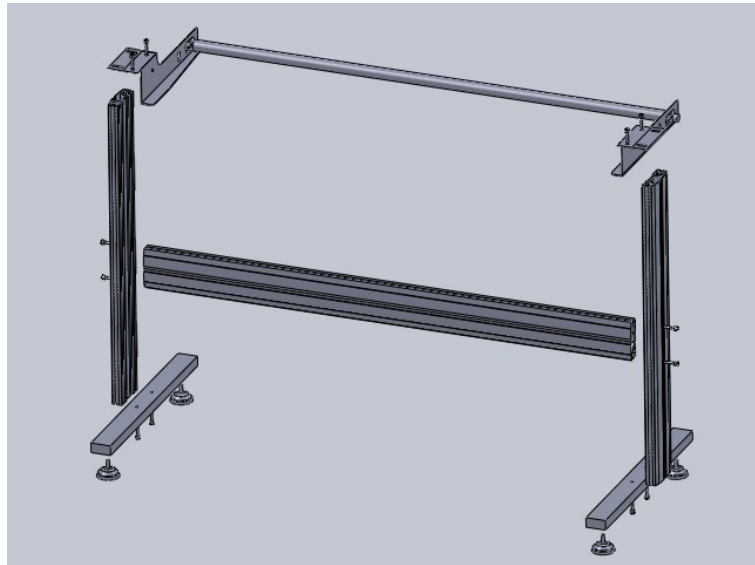


Don't use plotter when thundering

## 2. Standard accessory

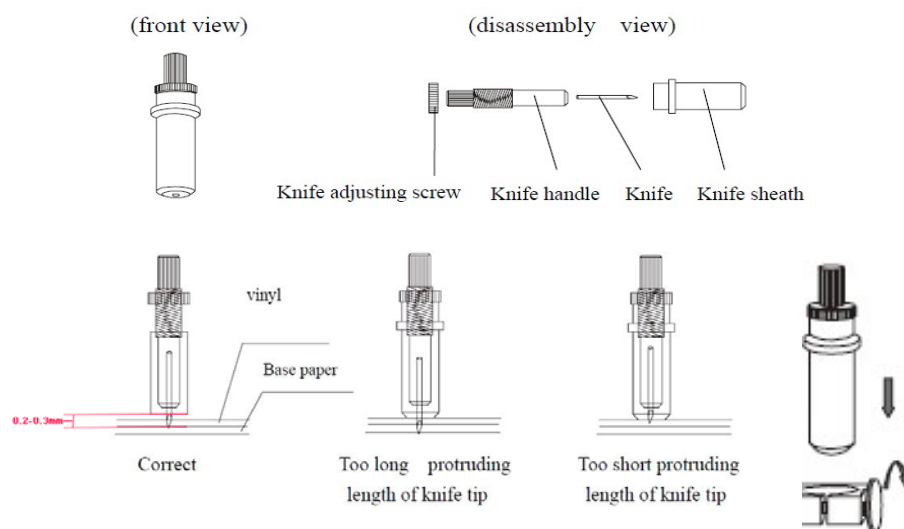


### 3. Assemble cutting plotter:

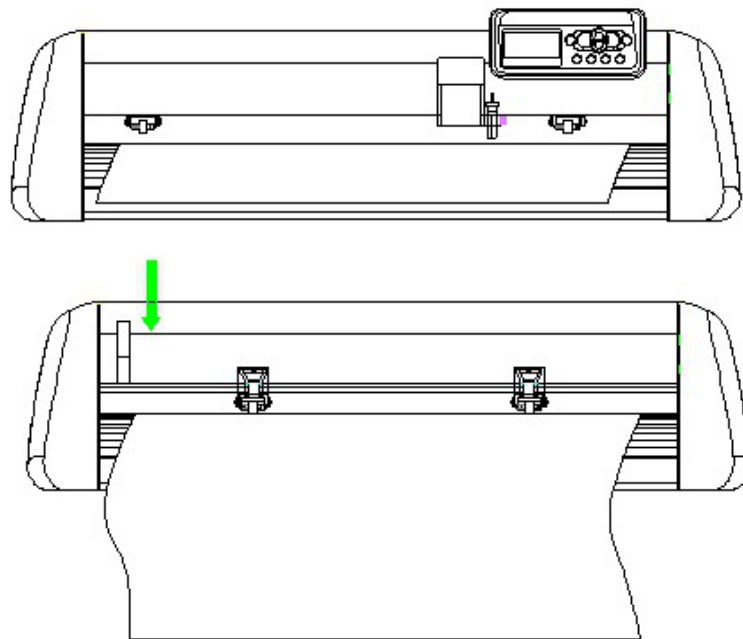


3.1 1200mm&1600mm plotters have stand, stand for 630mm plotters is optional,330mm plotters has no stand. First lock stand with screws; Put the cutting plotter in a dry and flat place, connect power supply, USB cable;

3.2 Install cutting blade as below:



3.3 Place the materials in cutting plotter, the steel shaft claw should be fixed on the roller as photo shows:



### 3.4 Buttons:



**Off line pause:** Offline the cutting plotter, can move the carriage; Pause the cutting plotter when it is cutting;

**Origin:** Fix the place.

**Test:** Before cutting, do a test to confirm the blade is installed correctly, the force and speed is suitable for materials;

**Mode:** Exchange Chinese to English, change blade to pen;

**Reset:** Reset the files;

**Enter:** When using SD card to cut, find the exact file, click “Enter” to start cutting;

Direction key buttons: LCD shows speed and force, up and down buttons,

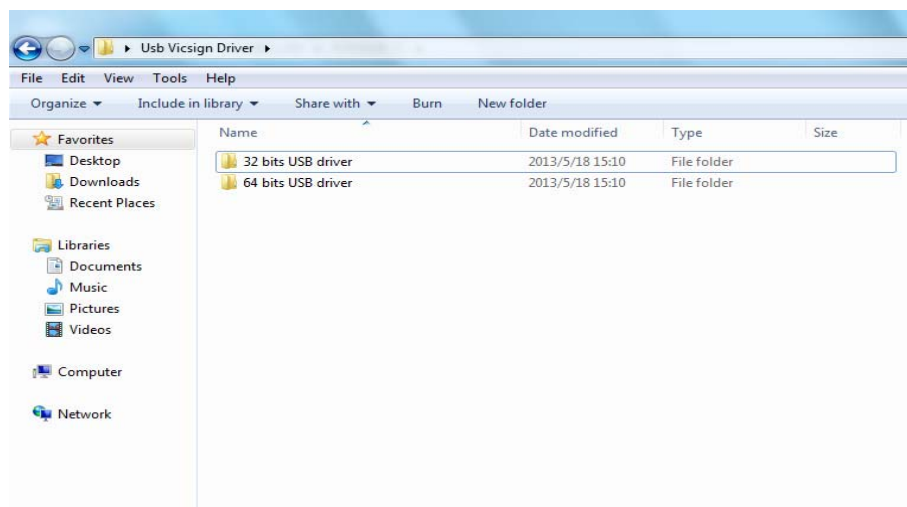
increase or decrease speed, left and right buttons change force; Offline cutting plotter, move carriage with direction key buttons;

**3.5 Force and speed:** Cut some thin materials like vinyl, the force will be around 100g, cut thick materials like reflective film, it is about 200g-300g; The speed for step motor cutting plotter is 0-650mm/s, servo motor cutting plotter is 1200mm/s;

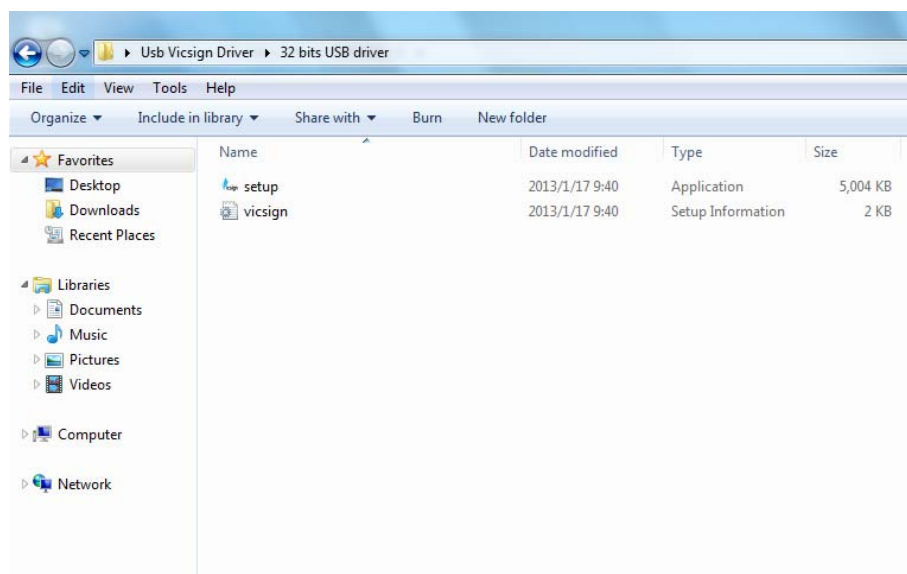
## 4. Install USB driver

USB driver is optional to install. When install USB driver via USB cable, and the system of computer is 32-bit Win xp/Win7/Win8, should install 32-bit USB driver ; the system of computer is 64-bit Win7/Win8, should install 64-bit USB driver. When the plotter works without USB driver , should choose “USB\_Printer\_0” as port in Flexi software. But select “USB001” as port in Coreldraw plug-in.

(Use RS232 cable, no need install USB driver, and the port will be COM1)

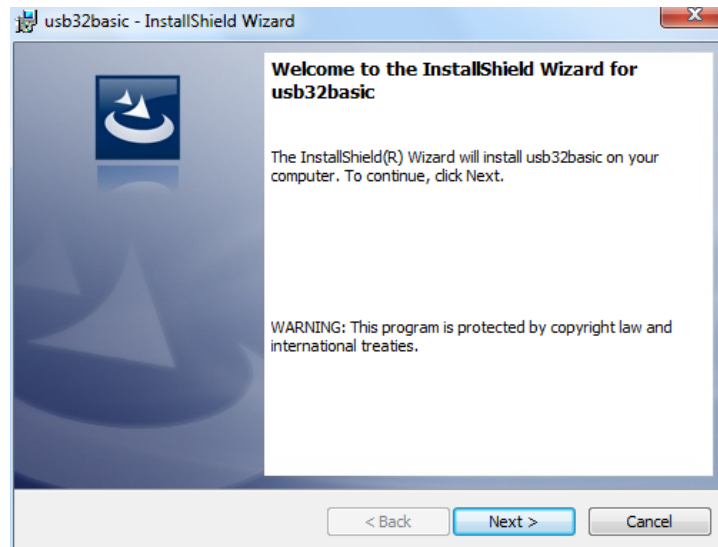


Double click “setup”:

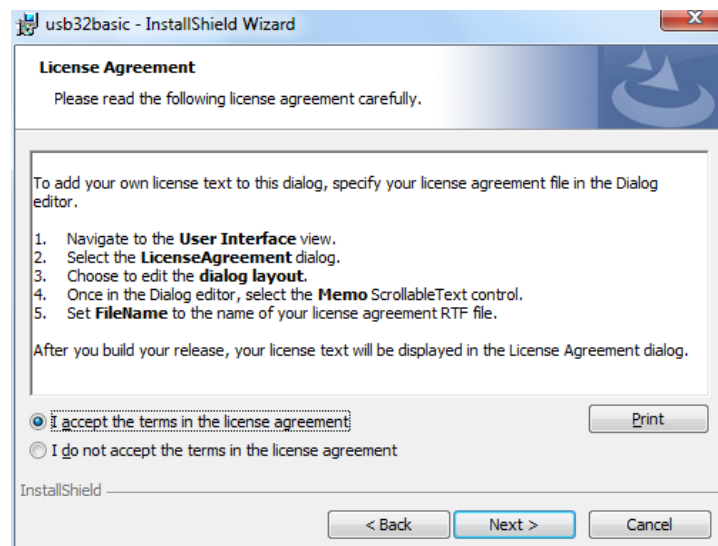




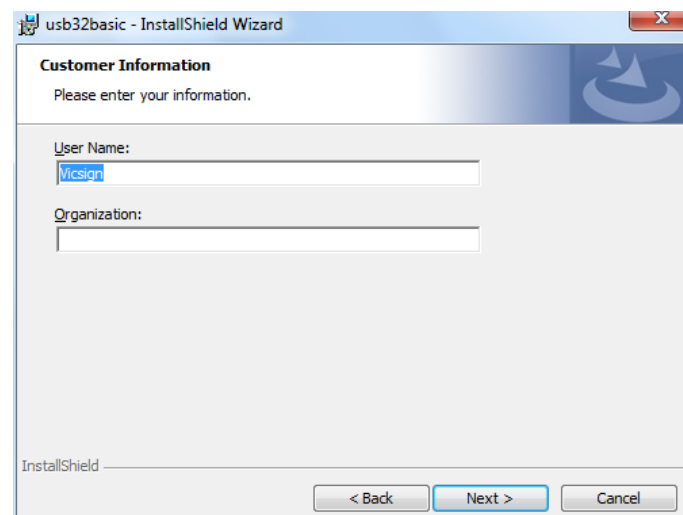
Click “Next”:



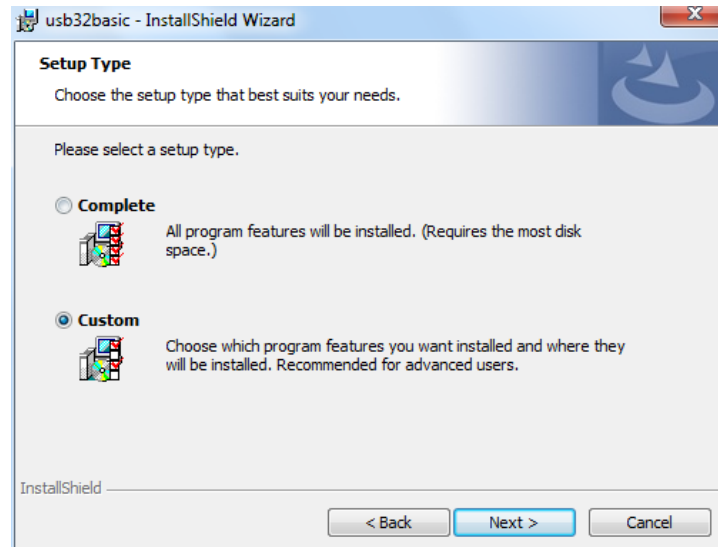
Click “Next”:



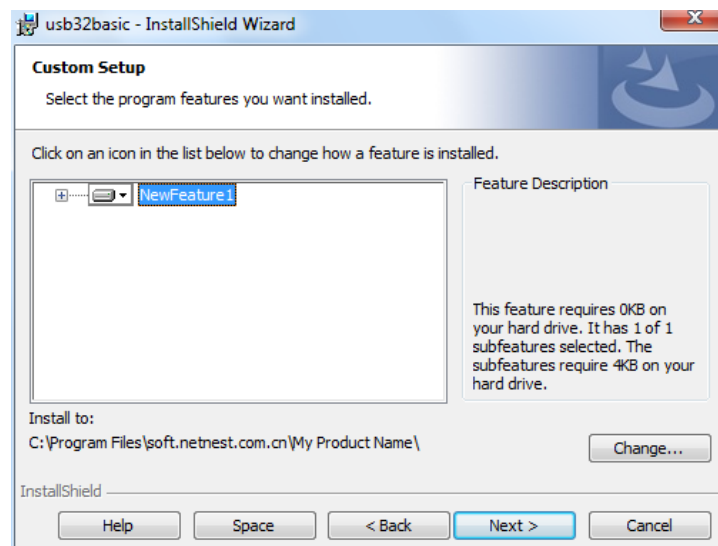
Click “Next”:



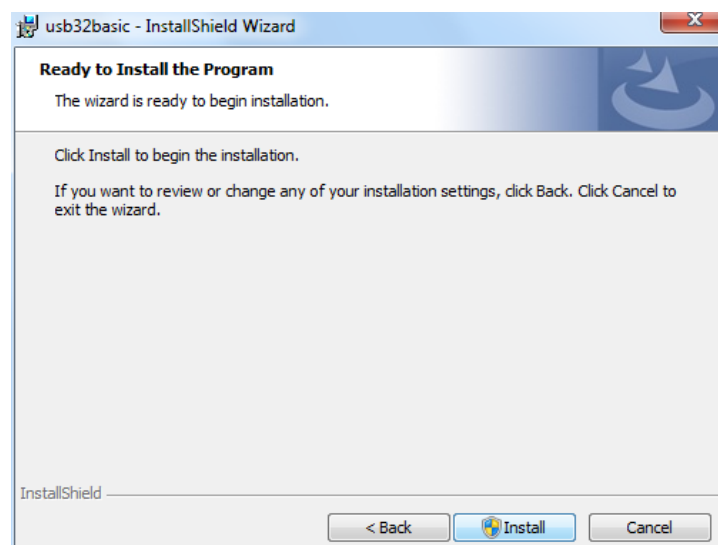
Click “Next”:



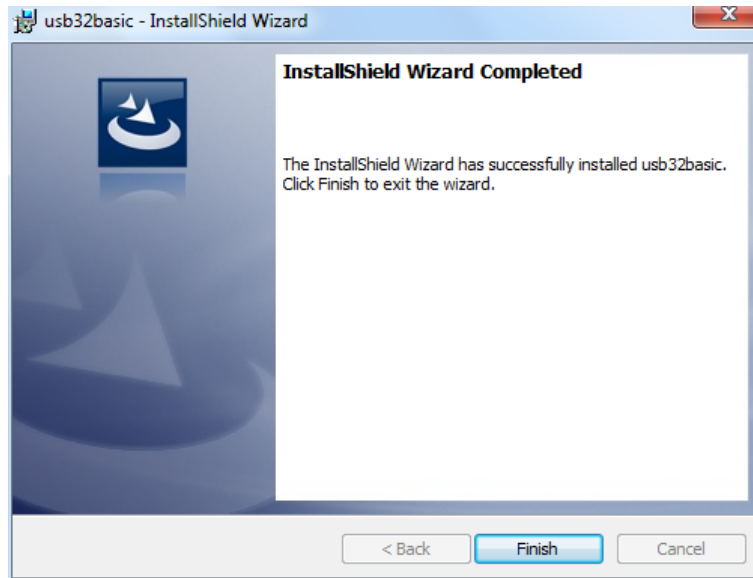
Click “Next”:



Click “Install”:



Click “Finish”:



## 5. Use SD card

Insert SD card into SD card port:



Select the correct file:



Click "enter" button to cut:

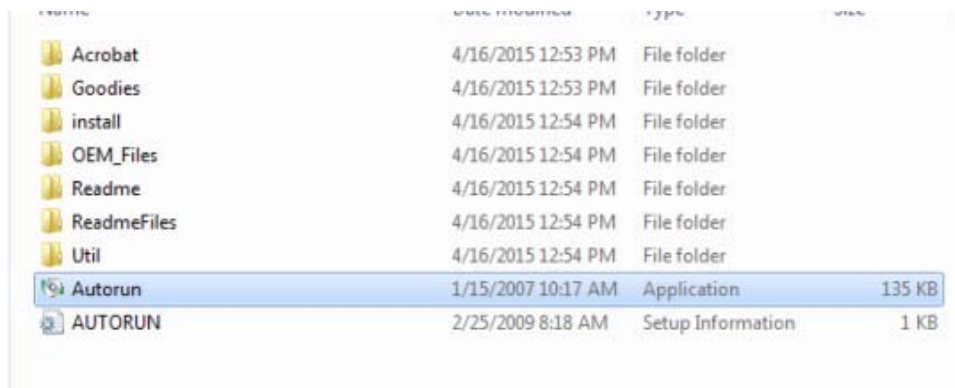


## 6. Install Flexi software:

Put Flexi CD into CD ROM, open flexistarter, no need insert dongle into computer when installing Flexi software:



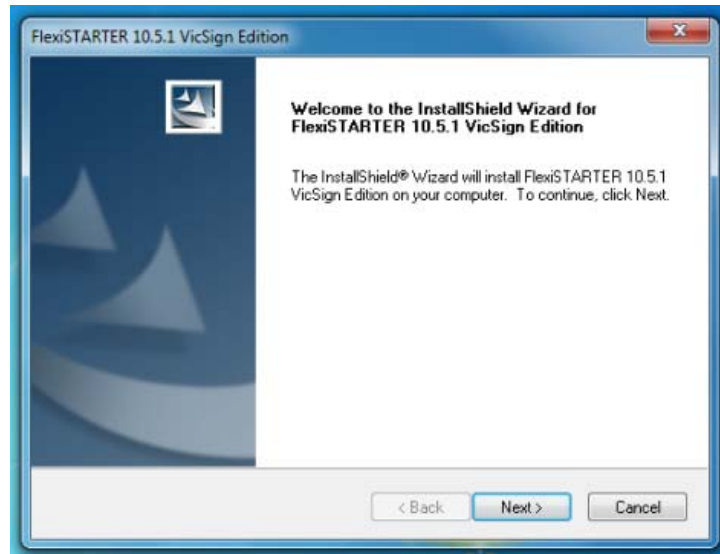
Double click “Autorun.exe”:



Choose the type of language, click “OK”:



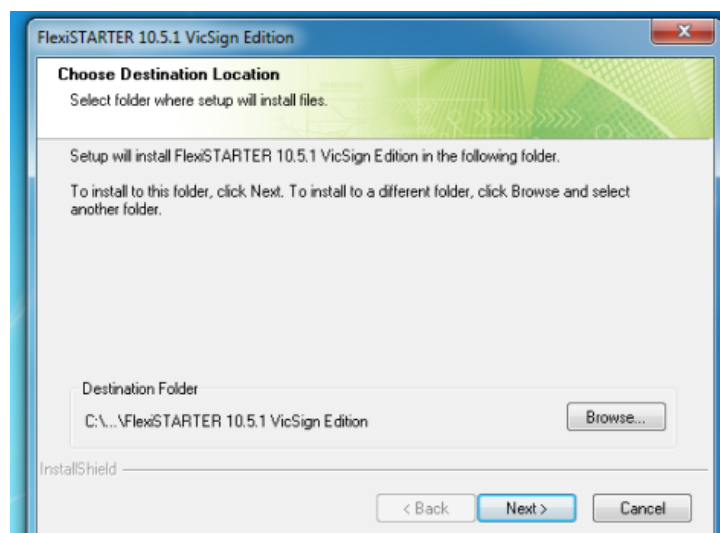
Click “Next”:



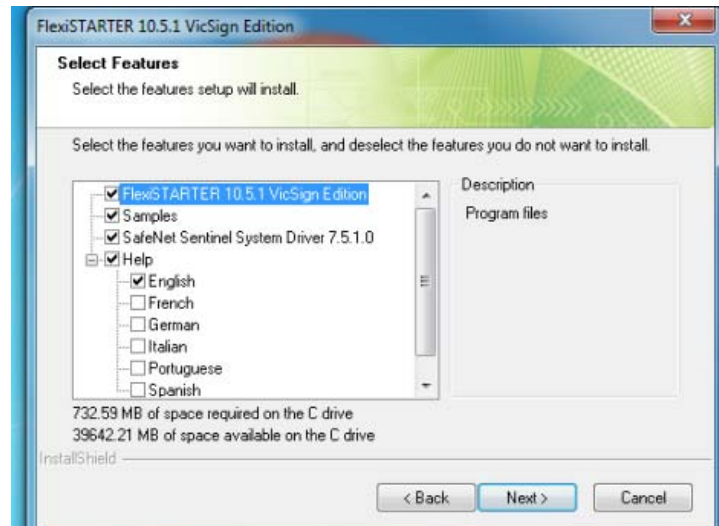
Click “Next”:



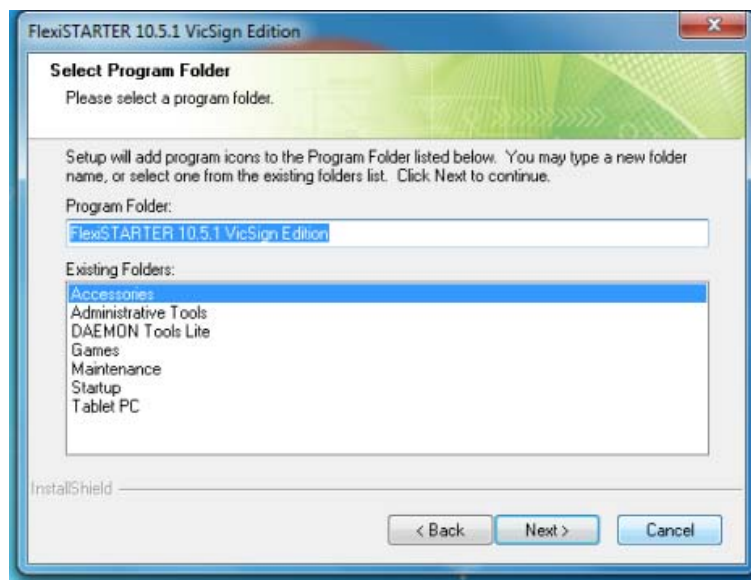
Click “Next”:



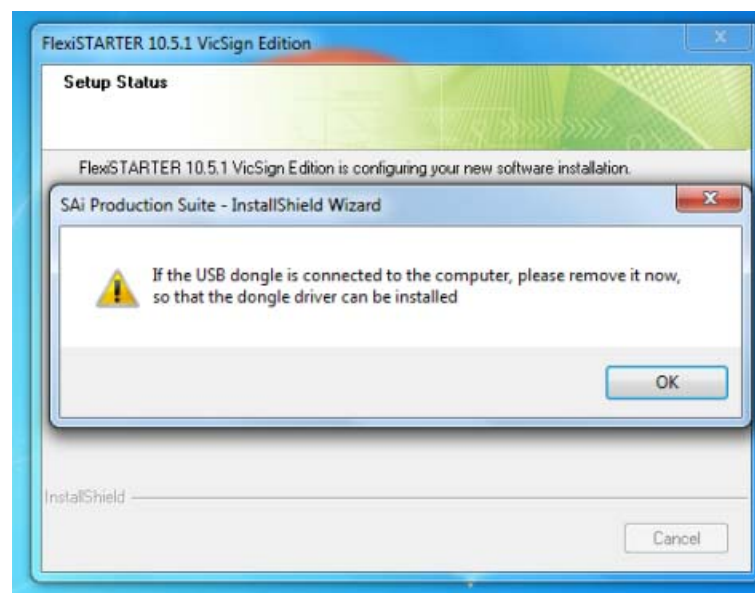
Click “Next”:



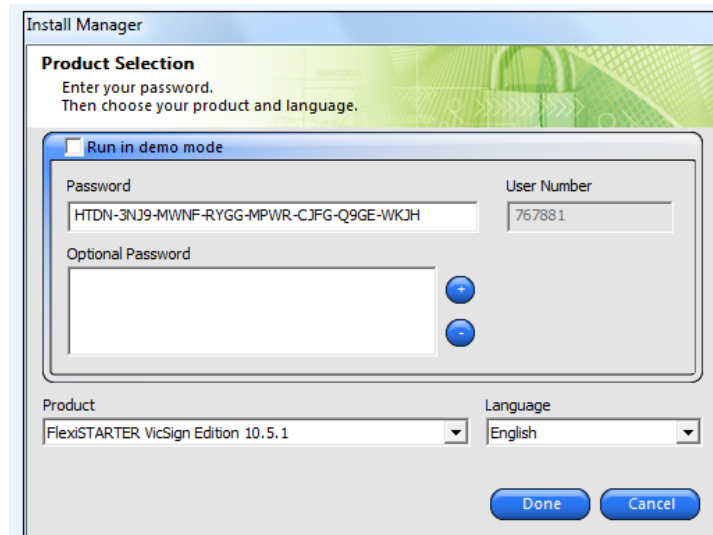
Click “Next”:



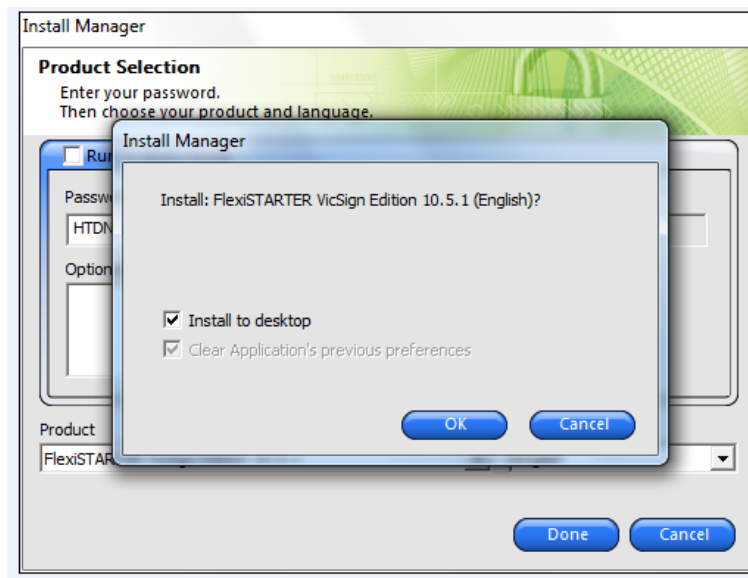
Click “OK”(Don’t insert dongle at the time):



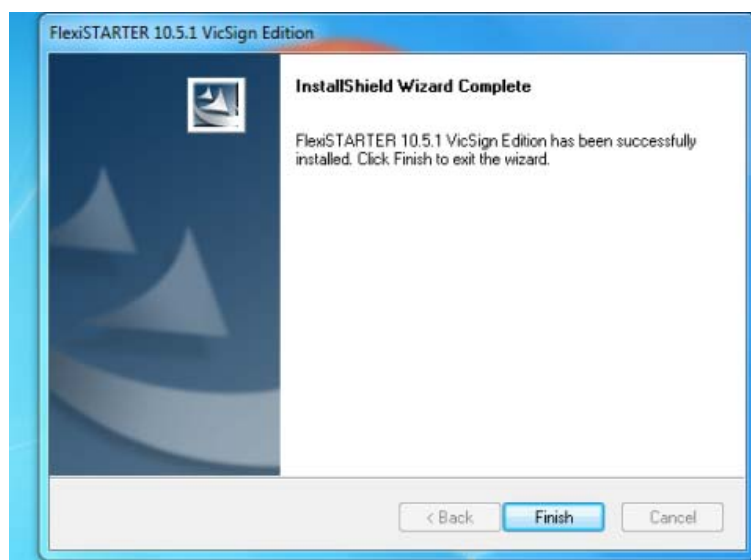
Input the password, then click “Done”:



Click “Ok”:



Click “Finish”:

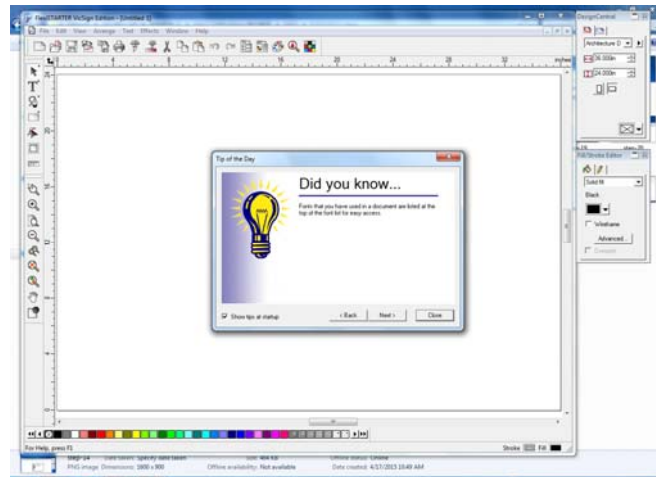




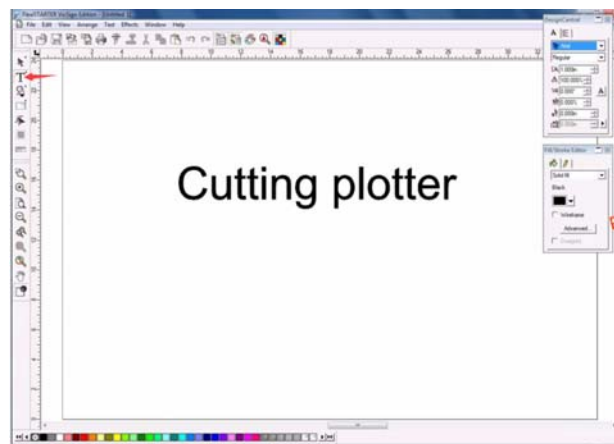
## 7. Operate Flexi software

### a. Cutting words:

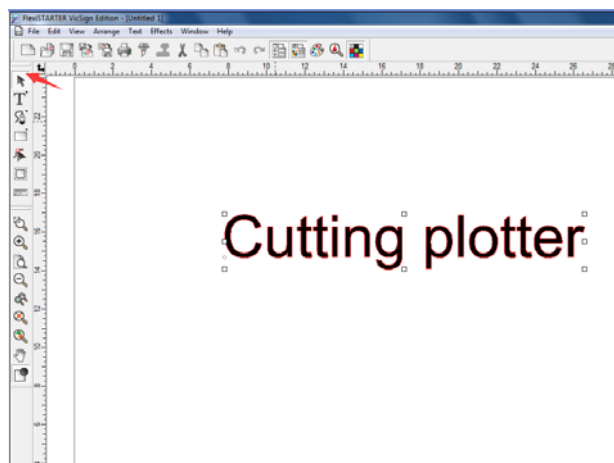
Insert the dongle into computer, open Flexi software, click “close”:



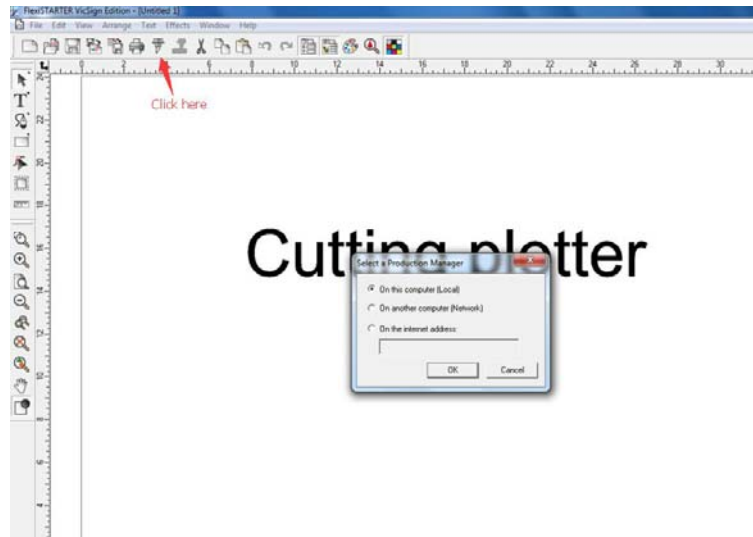
Select the right material size in design center, like A4. Click “T”, then input words:



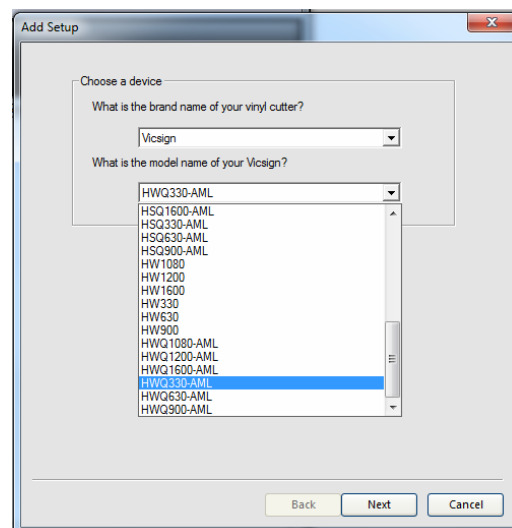
Select the words:



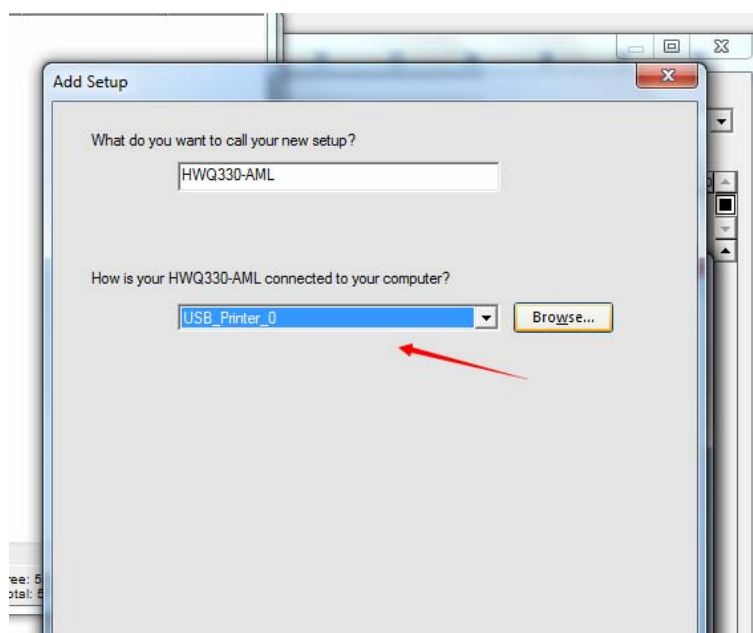
Click here, then click “ok”



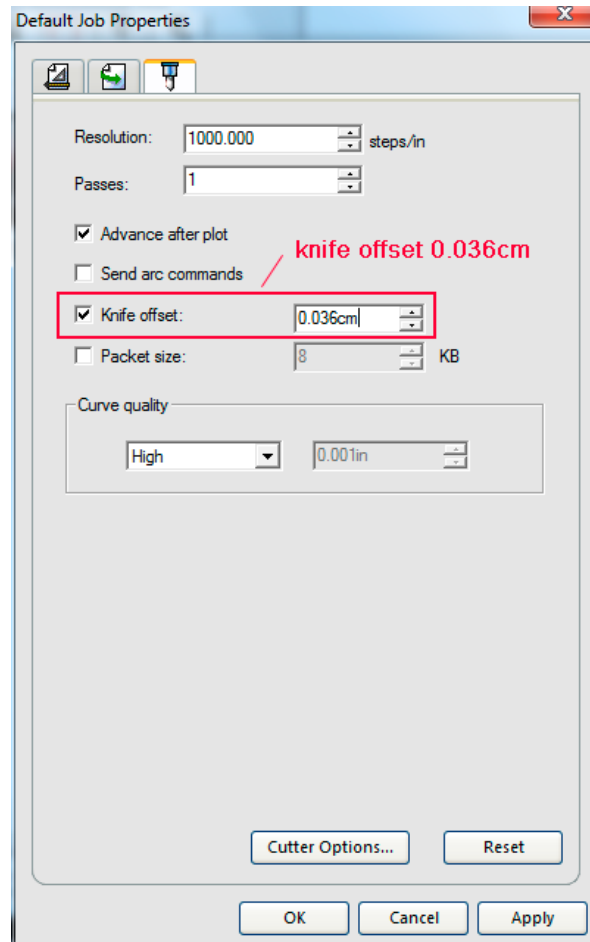
Choose brand name “Vicsign” and correct model name, click “next”



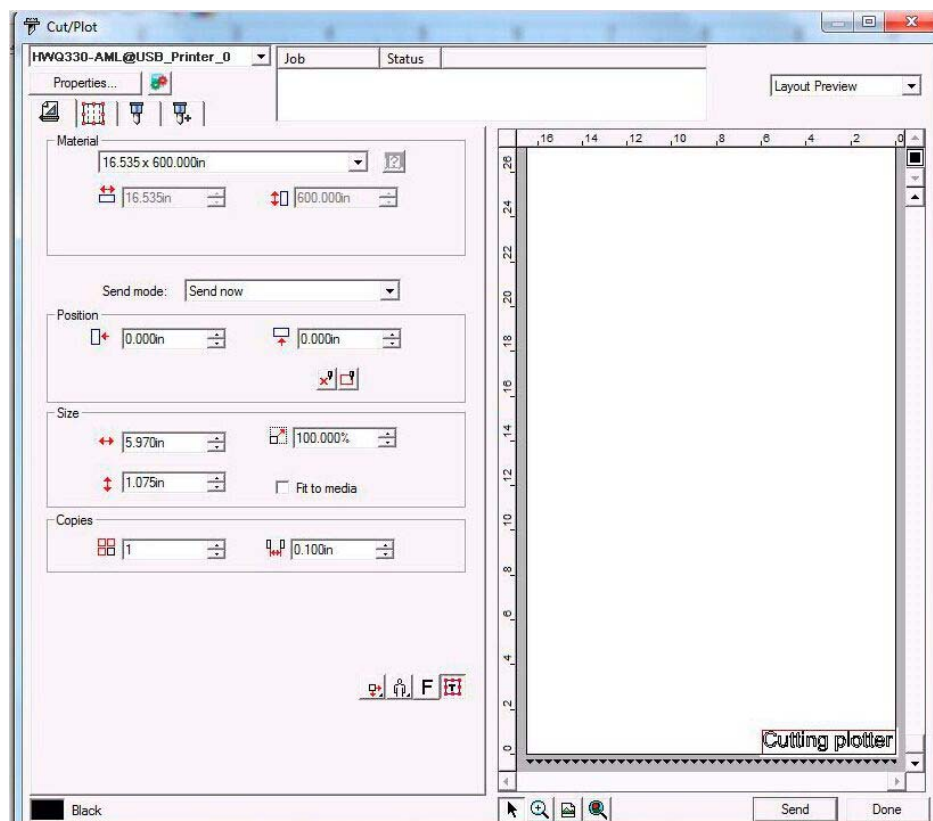
Use USB cable, select “USB\_printer\_0” ;Connect RS232 cable, choose COM1;



Set knife offset “0.036cm” ,click “apply” and then “ok”:

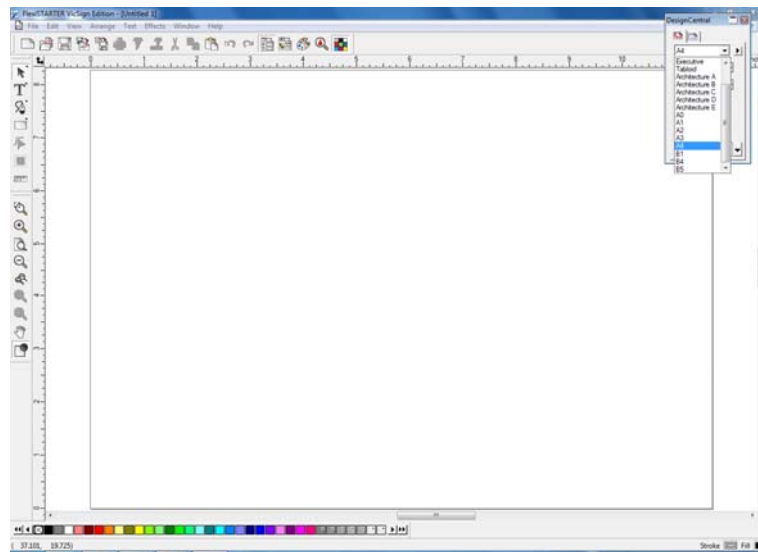


Click “send”

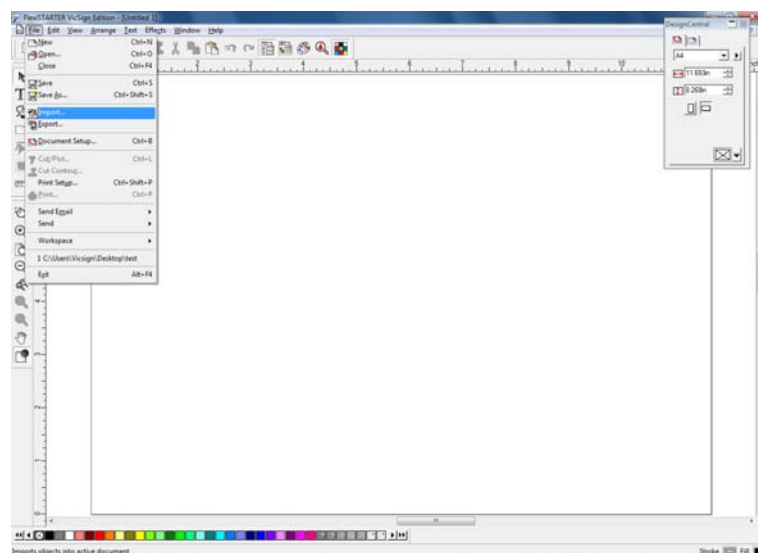


**b: Do contour cutting:**

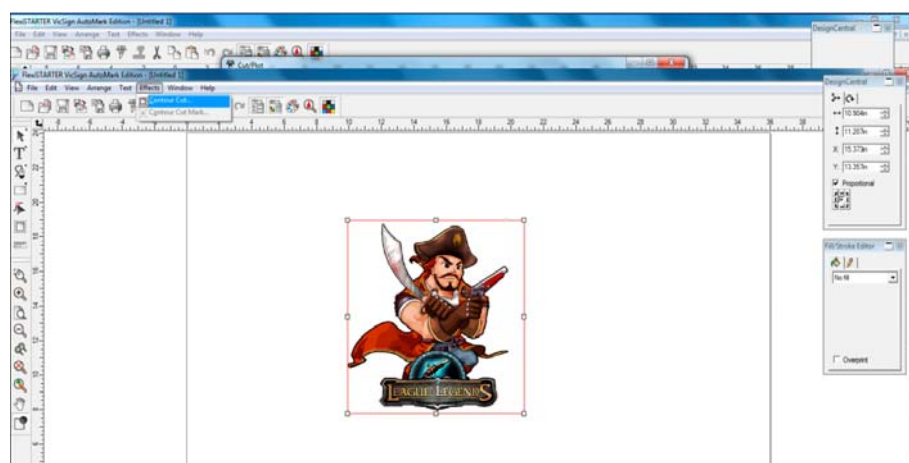
Choose right material size, like A4:



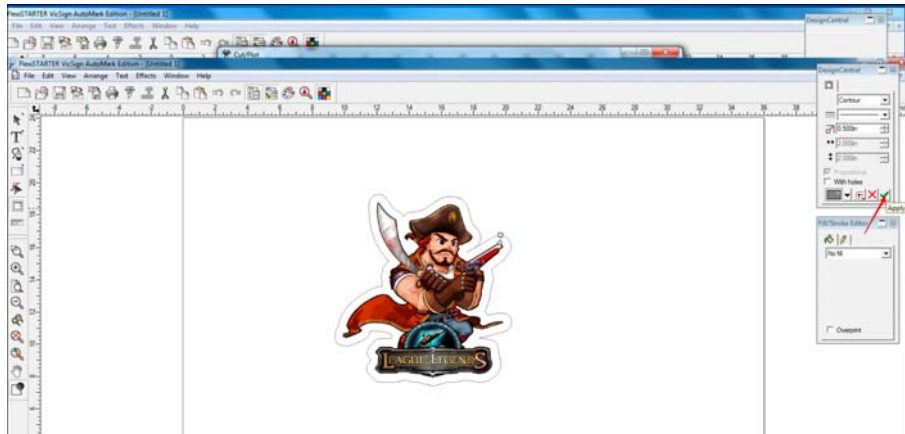
Import file:



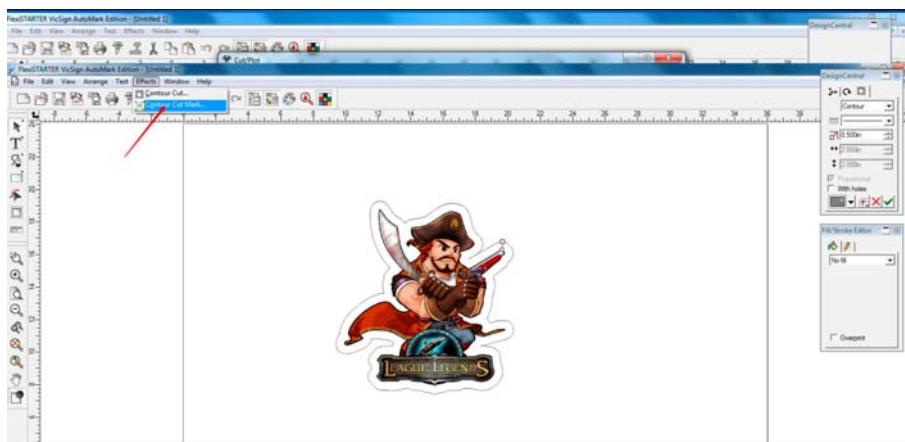
Select the file, then Click “Effects” and “ contour cut”



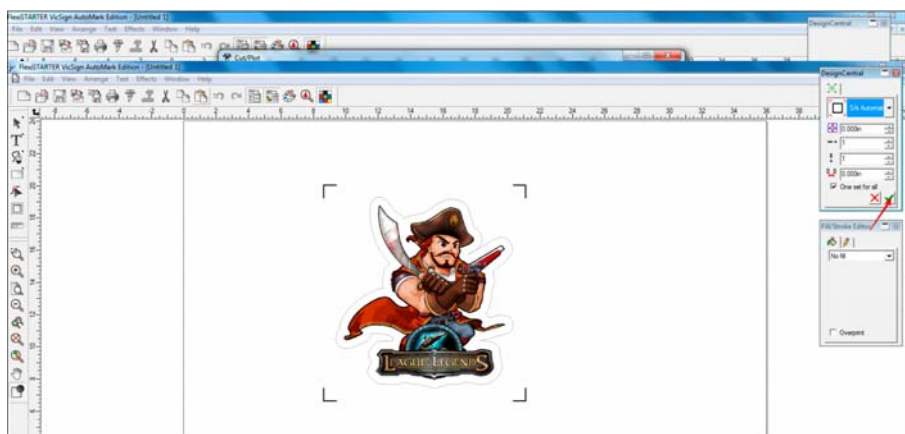
Click here:



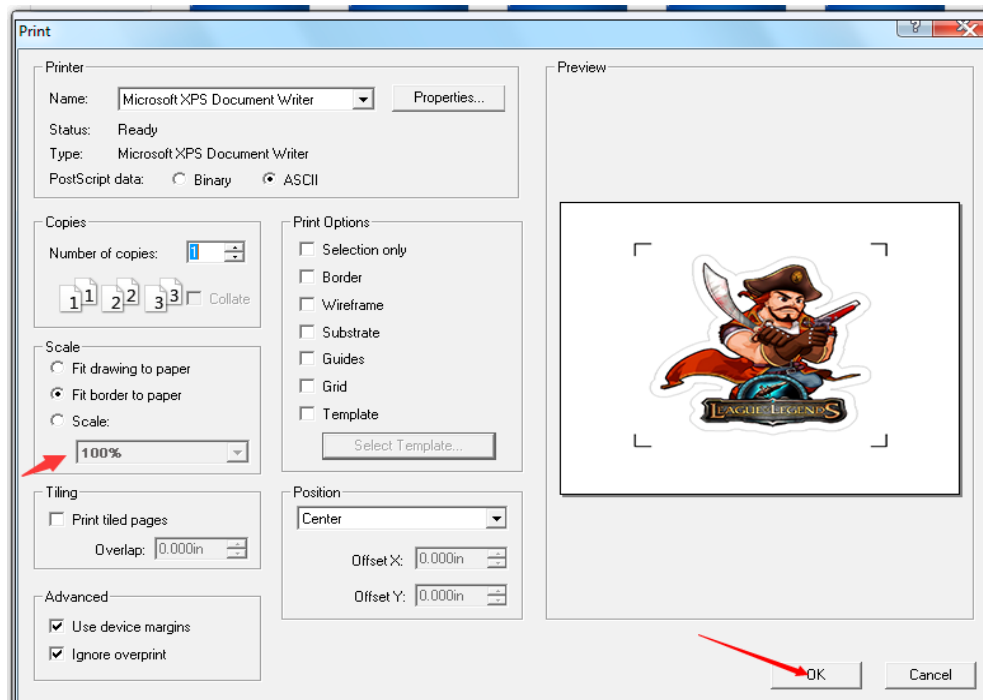
Click “Effects” and “ contour cut Mark”



Click here:

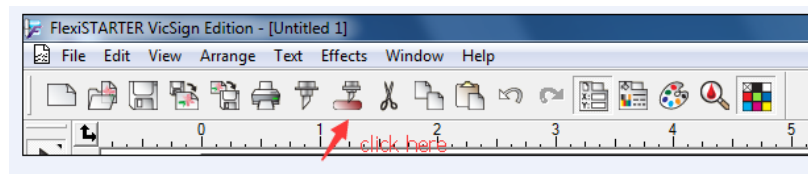


Print the file, no enlarger or smaller than original file, proportion is 1:1(100%):

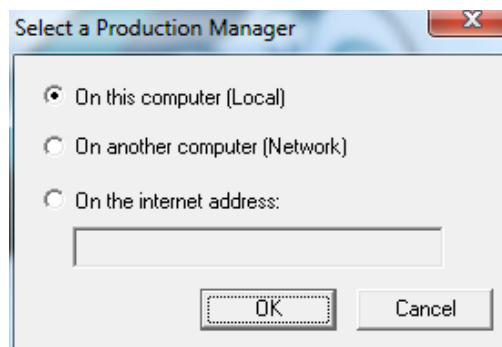


Place the image in cutting plotter, click “offline pause” button, move the carriage and fix the blade/pen in the area of Mark1, then click “origin”

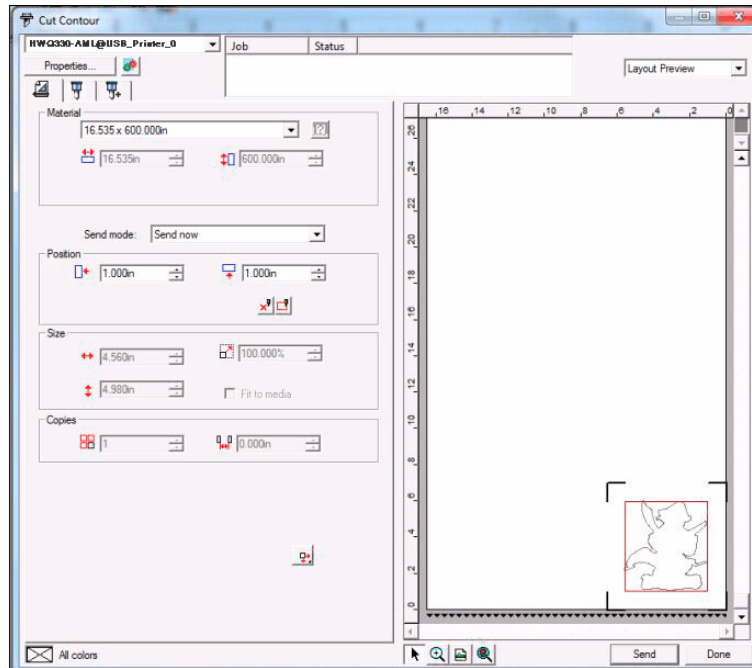
Click here:



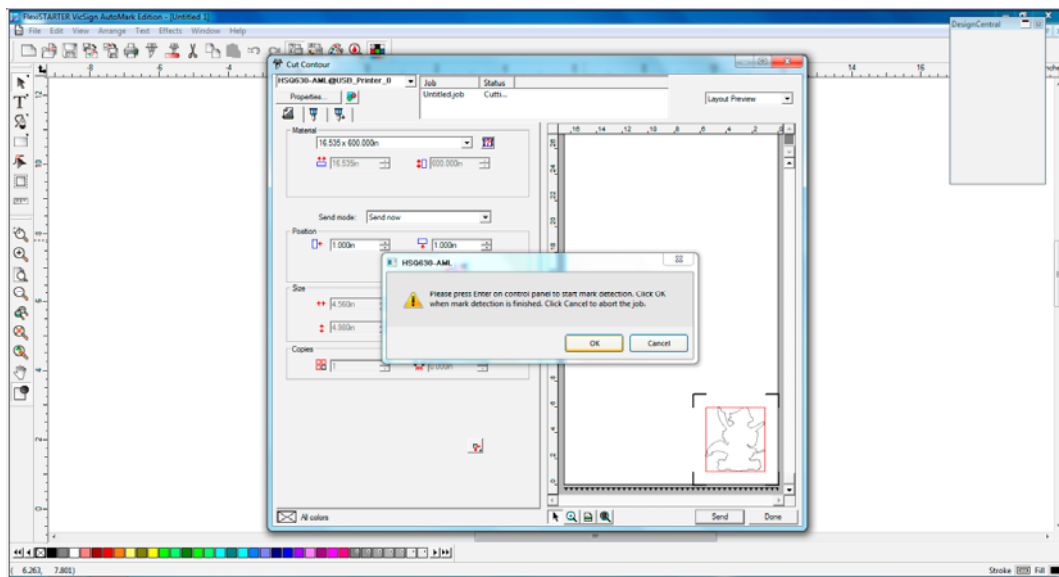
Click “ok “



Click “send”

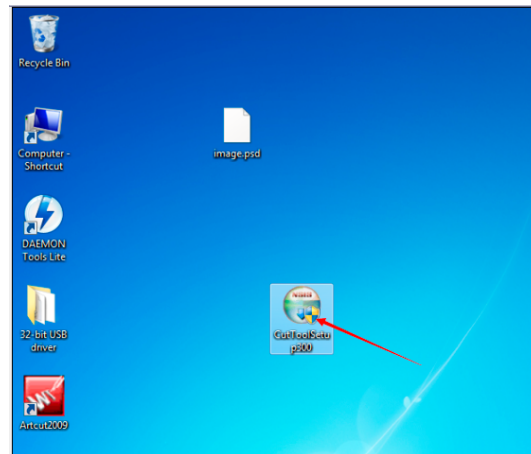


Click “ok”

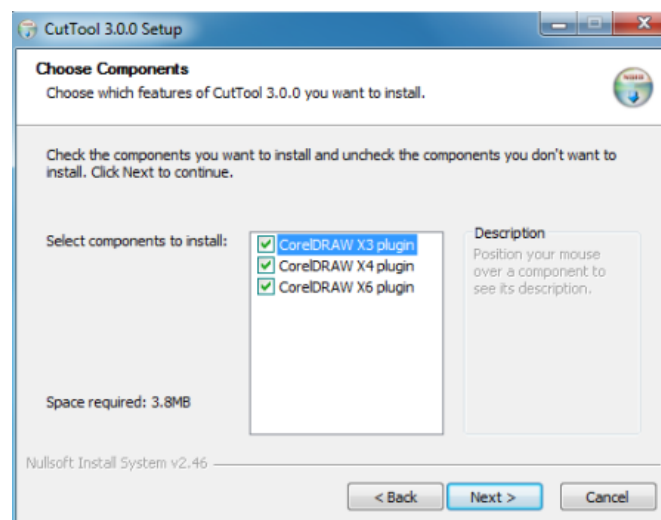


## 8. Install Coreldraw plug-in(Cuttool)

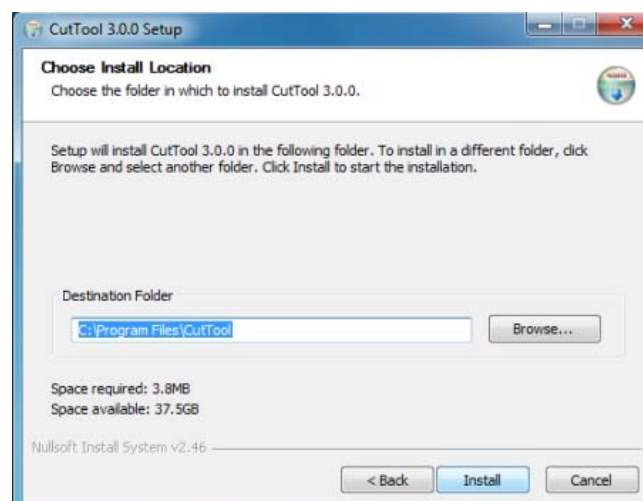
Install “CuttoolSetup300.exe” (Exit the antivirus software when installing)



Click “Next”



Click “Install”





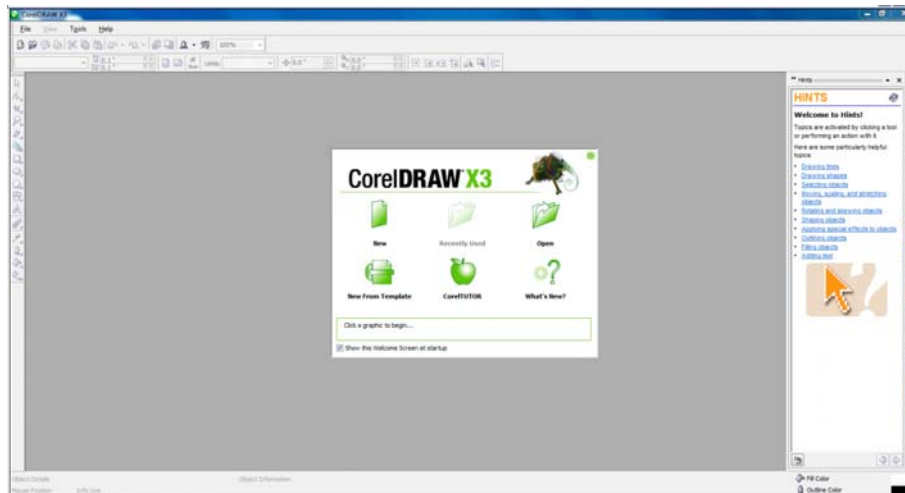
Click “Finish”



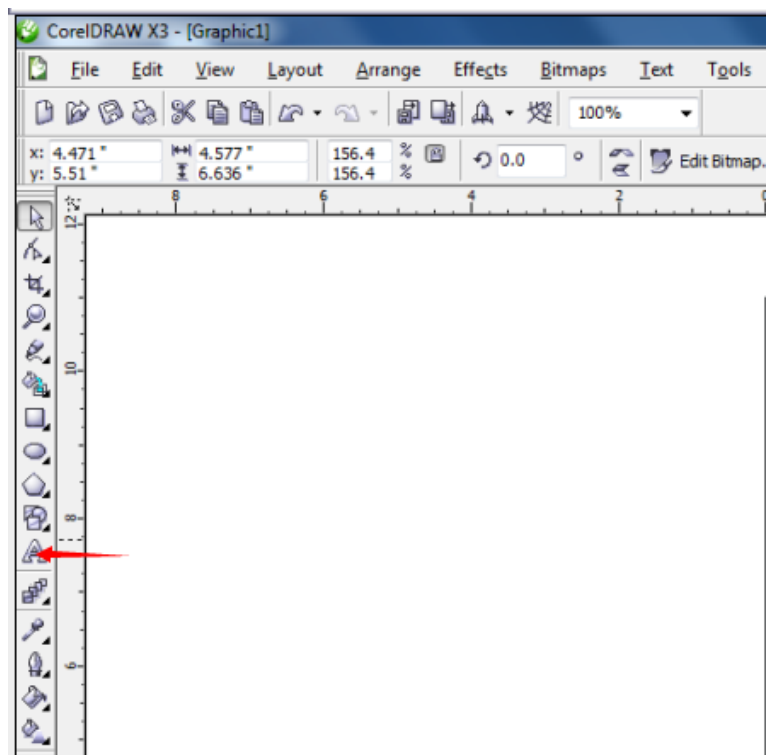
## 9. Operate Coreldraw plug-in(Cuttool)

### a. Cutting words

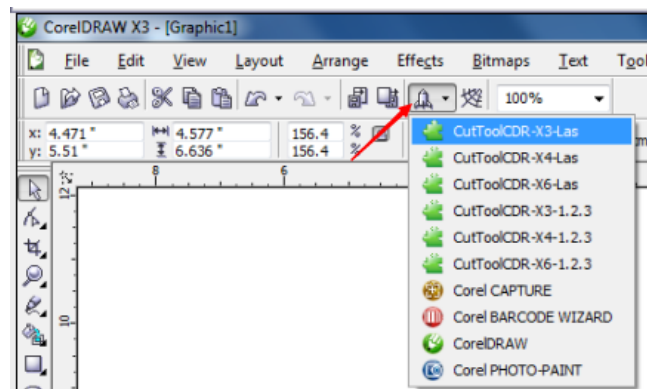
Insert the dongle into computer, open Coreldraw x3 or Coreldraw x4,click “New”.



Click “A” and input words.



Choose the words, click here and choose the right cuttool that matches with the design software, say if your Coreldraw version is x3, please select CuttoolCDR x 3.

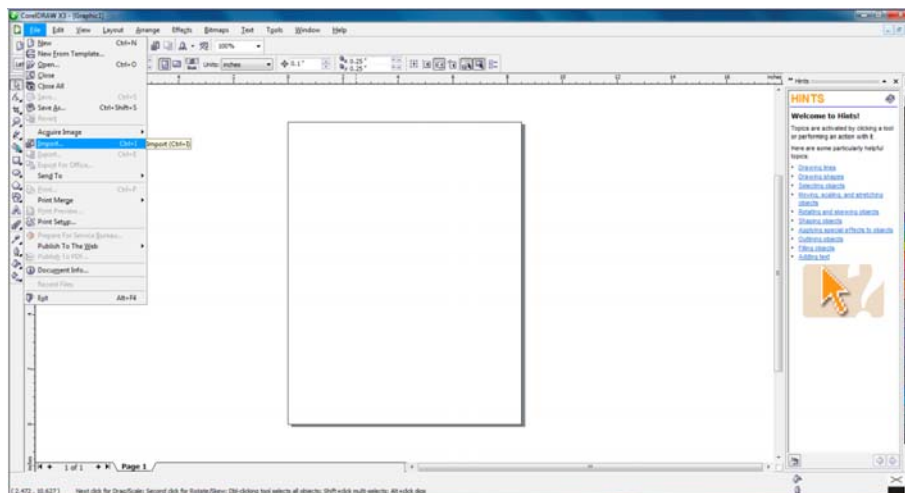


Click "Cut/Plot";

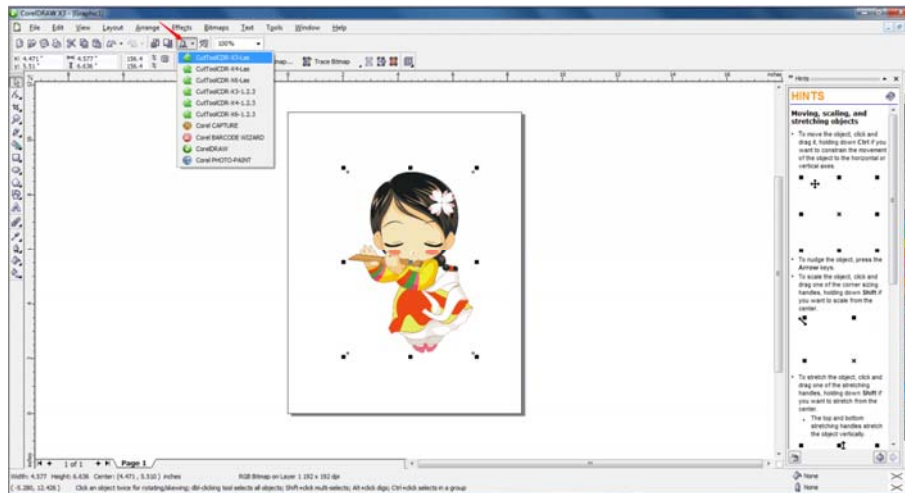


b. Do auto contour cutting

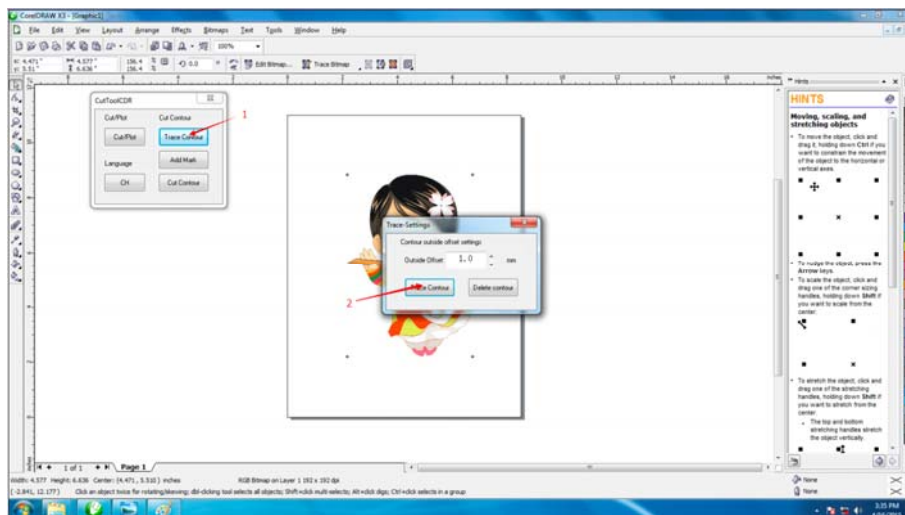
Import the file



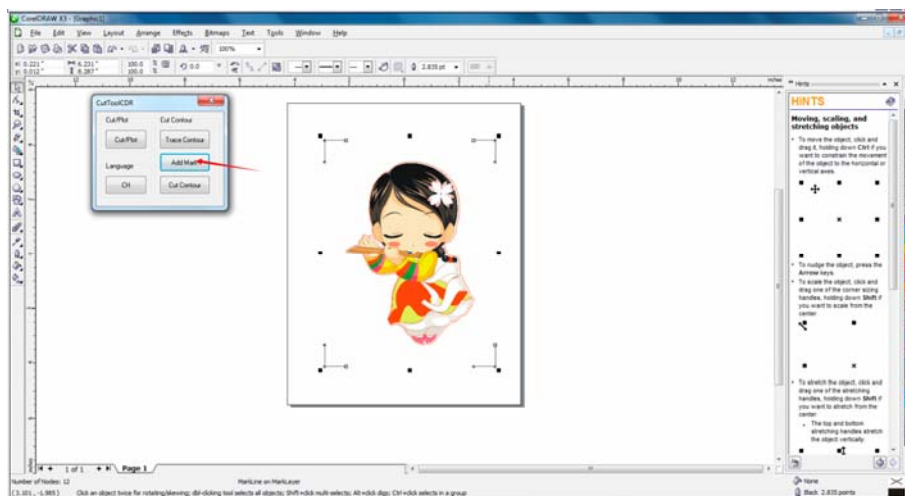
[Click here](#) and choose the right Cuttool that matches with the design software.



Select the picture, click “Trace Contour as below;



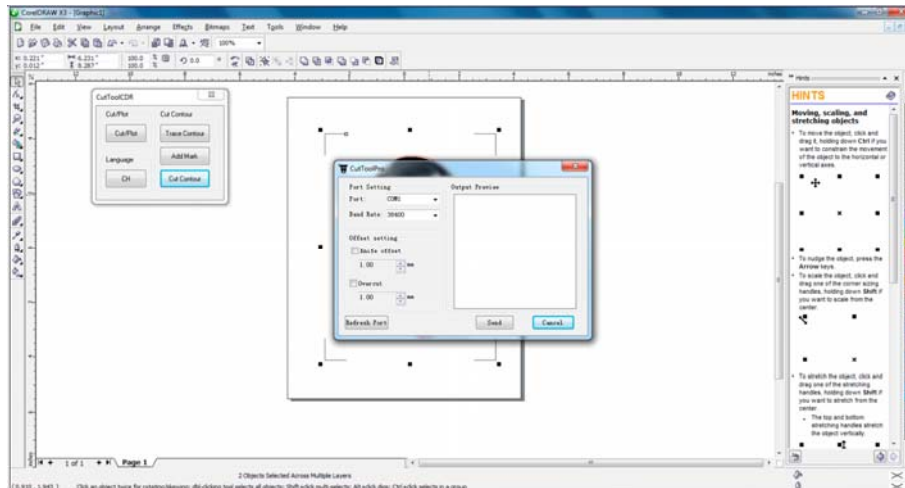
Click “Add Mark”



Print the file, no enlarger or smaller than original file, proportion is 1:1(100%):

Place the image in cutting plotter, click “offline pause” button, move the carriage and fix the blade/pen in the area of Mark1, then click “origin”

Then click “Cut contour” and choose the right port, click “send”



Click “OK”

