

Code

LCM-RJ-1390-150W; LCM-RJ-1390-100W, LCM-RJ-1390-80W

Name

51" x 35" (1300mm x 900mm) Laser Cutting Machine, 150W RECI Laser

51" x 35" (1300mm x 900mm) Laser Cutting Machine, 100W RECI Laser

51" x 35" (1300mm x 900mm) Laser Engraving and Cutting Machine, 80W Laser

Overview	Specifications	Packing list	Warranty	Video & samples
----------	----------------	--------------	----------	-----------------

Materials that can be cut: Non-metal materials, such as bamboo, plexiglass, acrylic, rubber, paper, and so on. With the improved linear guide, this machine has a perfectly cutting or engraving precision.

F Feature

- Professional design for client in different industry, reasonable structure, pleased appearance & practical.
- High strength & high stable mechanical structure composed of high precision mould, machine moved stable, in high speed & precision, back - open design convenient for material process & no limit for material length.
- Adopt flight path design, special structure, little path deviation, high performance & easy adjustment.
- Update USB offline control system & large memory capacity to improve work speed & efficiency.

A Advantage

- Avoid polishing, processing high speed, and high precision;
- Glass viewing windows creating a safe enclosure for laser processing;
- Original Singapore imported lens can greatly improve working efficiency and reduce cost;
- Exhausting, absorbing and assistant blowing systems extend the life of the laser tube;
- Aluminum strip shape platform can bear heavier materials, such as acrylic, wood and much more non - metal materials;
- Large internal memory capacity improves the working speed with greater efficiency;
- With a fine cutting effect and price advantage.

U Used for

- Advertising Industry: Acrylic, double color board & other advertising material engraving & cutting.
- Leather Industry: Engraving & through - carving on leather & cloth.
- Craft Industry: Engrave and cut on paper, wooden material, bamboo, leather, seashell & ivory material.
- Model Industry: Cutting for architectural model, Aviation and navigation model, wooden toy.
- Packaging Industry: Engrave & cut on rubber, composite board & Laser die board.
- Engrave & cut in decoration industry & electronic appliance industry materials

B Benefit

- 51" x 35" (1300mm x 900mm) working area
- Up to 48" IPS (1200mm / s) high working speed
- Pass - through front and rear doors to accommodate long work pieces
- Equipped with high quality water chiller CW3000/CW5000, which can prolong the lifespan of the laser tube and ensures a better engraving effect

Details

Maximum Working Area: 51" x 35" (1300mm x 900mm)

Maximum Cutting Speed: 24" (600mm) / s

Maximum Engraving Speed: 48" (1200mm) / s

Laser Power: **Reci 100W / Reci 150W / 80W**

Laser Type: Sealed - off Glass CO2 Laser, Wavelength: 10.6um

Max. Cutting Thickness (Acrylic): $\leq 1"$ (25mm)

Location Precision: $< 0.01\text{mm}$

Power Supply: AC 110 or 220V $\pm 10\%$, 50Hz or 60Hz

Control System and Driver: High Speed DSP control system, stepper motor, High subdivision driver

Supported Format and Software: PLT, DST, DXF, BMP, AI, Support AutoCAD, Corel Draw output directly



Light Path and Laser Head



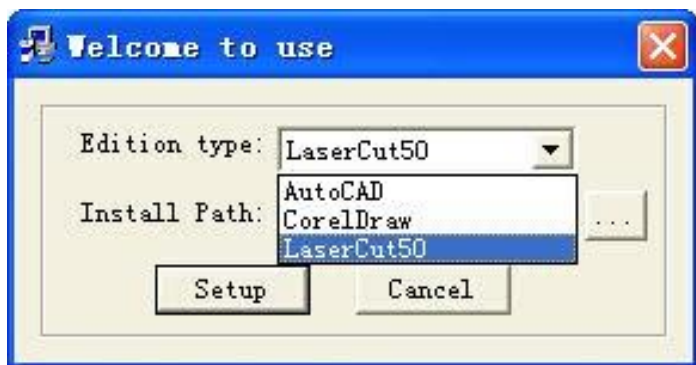
High quality Reci Brand Laser Power Source and Laser Tube, makes the laser machine has long usage.



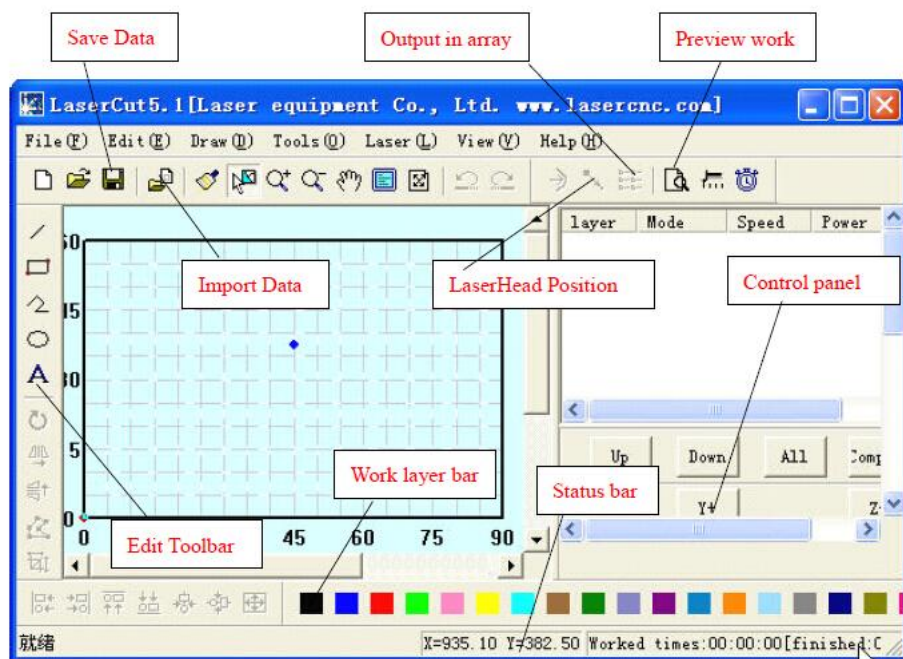


About Engraving Software (Leetro engraving software)

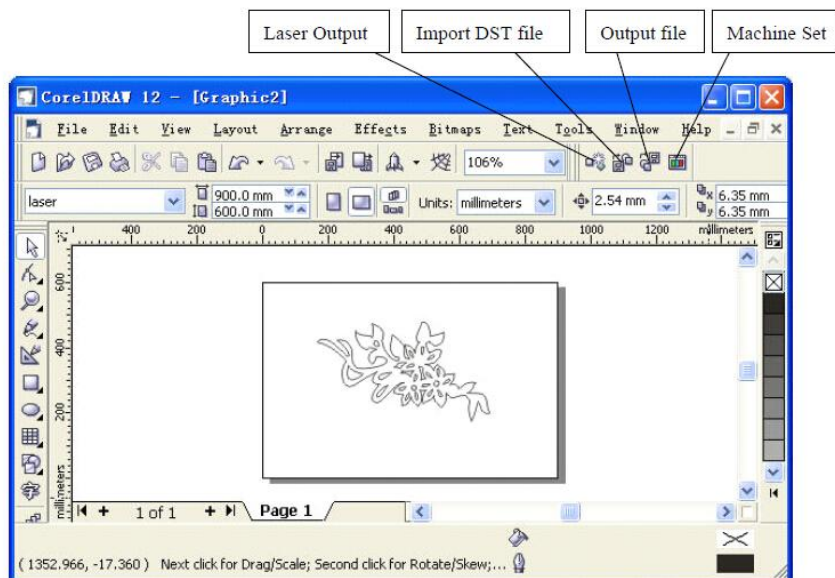
- Advanced position compare output
- Functionality provides perfect solution against the misplacement problem. Engraving speed up to 90m/min
- Distinct look-ahead algorithm and track - fit algorithm
- Highly enhanced the operating efficiency. Speed for cutting circles reaches 30 m / min
- Advanced synchronous tracking control
- Functionality ensures the synchronous changes of the laser power and the speed of laser head's moving
- No distortion in speedy cutting roundlet (diameter less than $\Phi 3\text{mm}$)
- LaserCut5.3 can be embedded in CorelDraw and AutoCAD



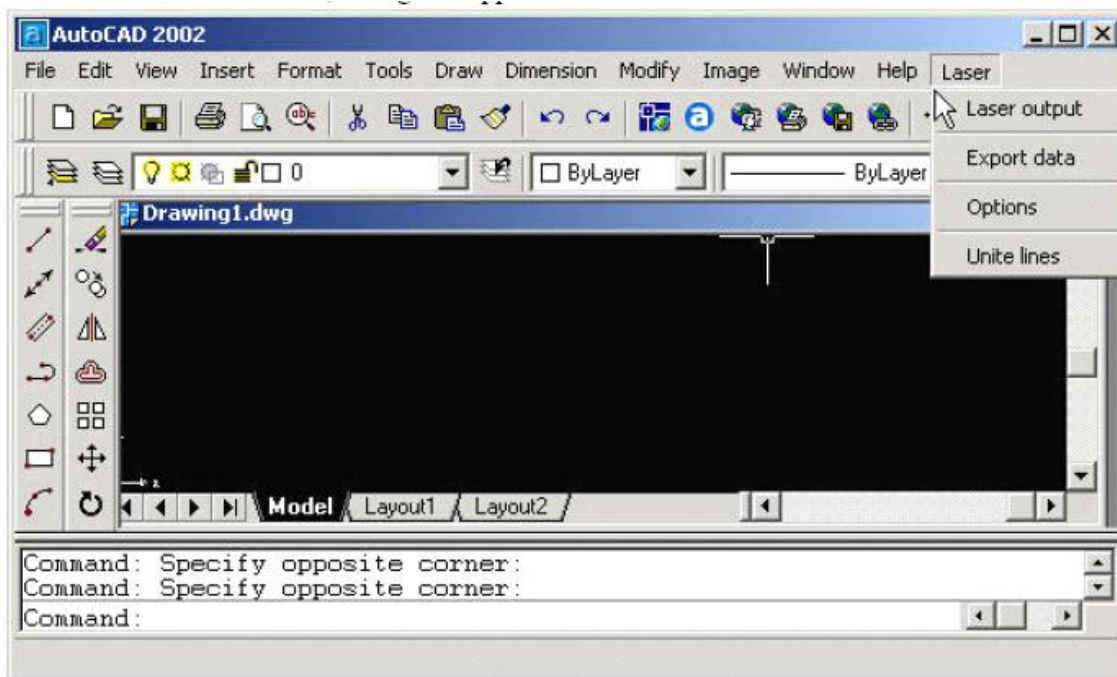
Edit Window



Add Laser Process Menu in CorelDraw include: Laser output, Import DST file, Output file and Machine Set, shown as below:



LaserCut 5.3 add AutoCAD laser procession menu. It includes: Laser output, Output file, Machine Set and Unite lines, dialog box appears as below:



Why Choose This Machine?

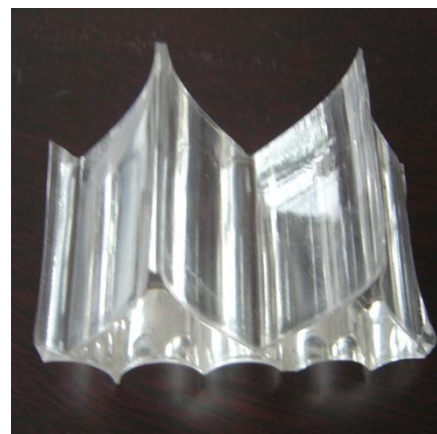
1) At the same quality grade, this laser cutting machine's price is better:

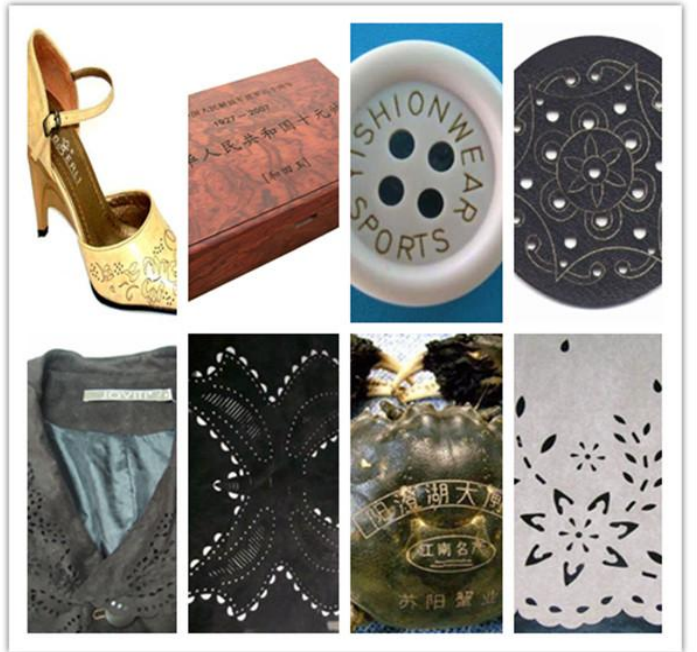
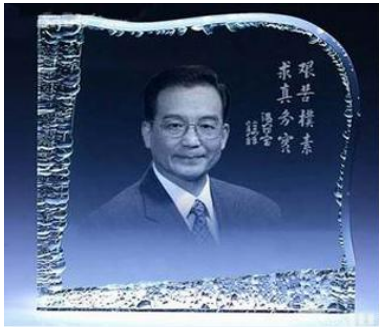
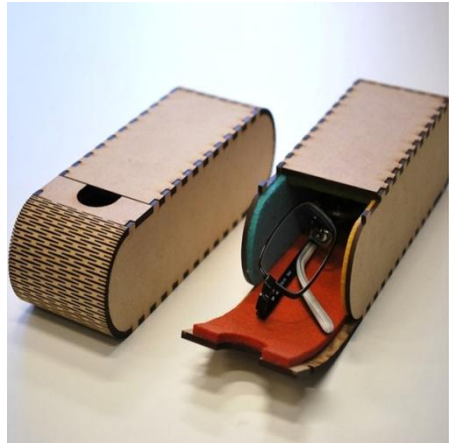
- a) This laser engraving and cutting machine are produced on large scale.
- b) We own advanced production equipment, high efficiency and low production cost, so we can provide you with the best price for machines.

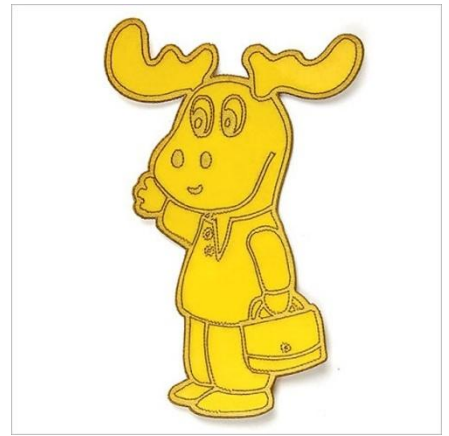
2) At the same price level, our service is better:

- a) Before purchasing, please learn information of this machine through our website or ask question through Live Chat, our service staff will recommend the proper model to fit your demand best.
- b) After - sale, we guarantee the machine in 24 months dating from the delivery. During warranty period, if some parts are broken due to manufacturing defect, we will send you new ones to replace them by free cost.
- c) We will provide you free technical supporting during the whole lifespan of the machine.

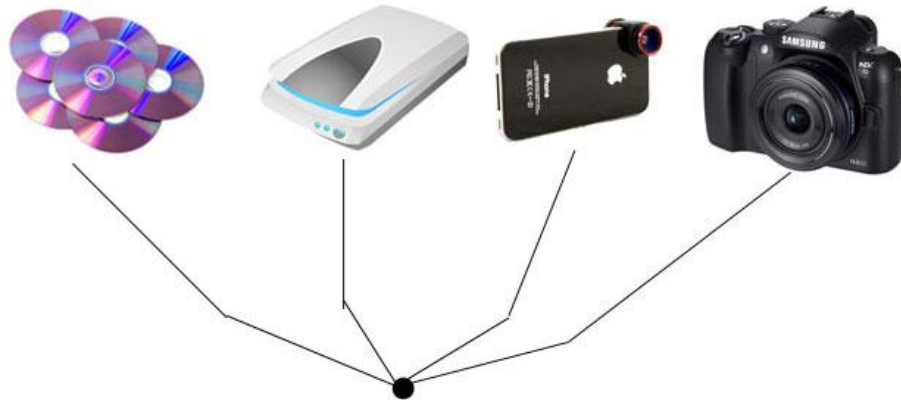
Usages







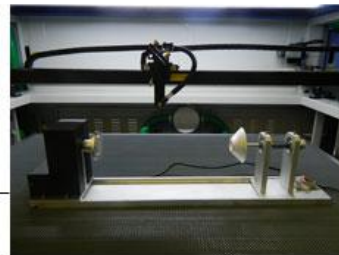
Step 1:



Step2:



Step3:



Finish:



Easy to use this laser system solution, three-step operation

1. Download your images from your camera, CD-ROM, DVD disk or your client onto your computer
 2. Design these pictures
Edit your pictures, logos or letters through our engraving software.
 3. Output edited pictures, letters, and engrave
Place the materials on the worktable of laser engraver and start to engrave or cut.
- Perfect finished products

Overview	Specifications	Packing list	Warranty	Video & samples
----------	----------------	--------------	----------	-----------------

不同型号对应不同参数表

Model	LCM-RJ-1390-100W
Maximum Cutting Area	51" x 35" (1300mm x 900mm)
Laser Power	Reci CO2 glass tube 100W (Normal lifespan: about 8000 working hours)
Cutting Speed	24" (600mm) / s (Adjustable)
Maximum Cutting Thickness	1" (25mm) (Acrylic)
Resolution Ratio	0.0064mm
Reposition Precision	0.0004" (0.01mm)
Power	1250W
Cooling Method	Water cooling and protection system
Supported Image Formats	PLT, DST, DXF, BMP, AI, Support AutoCAD, Corel Draw output directly
Cutting Software	Leetro engraving software
Interface	USB
Voltage	AC 110V - 240V, 50Hz or 60Hz

Model	LCM-RJ-1390-150W
Maximum Cutting Area	51" x 35" (1300mm x 900mm)
Laser Power	Reci CO2 glass tube 150W (Normal lifespan: about 8000 working hours)
Cutting Speed	24" (600mm) / s (Adjustable)
Maximum Cutting Thickness	1" (25mm) (Acrylic)
Resolution Ratio	0.0064mm
Positioning Precision	0.0004" (0.01mm)
Power	1250W
Cooling Method	Water cooling and protection system
Supported Image Formats	PLT, DST, DXF, BMP, AI, Support AutoCAD, Corel Draw output directly
Cutting Software	Leetro engraving software
Interface	USB
Voltage	AC 110V - 240V, 50Hz or 60Hz

Model	LCM-BY-Z1390-80W
Maximum Cutting Area	51" x 35" (1300mm x 900mm)
Laser Power	CO2 glass tube 80W (Normal lifespan: about 8000 working hours)
Cutting Speed	24" (600mm) / s (Adjustable)
Maximum Cutting Thickness	1" (25mm) (Acrylic)
Resolution Ratio	0.0064mm
Positioning Precision	0.0004" (0.01mm)
Power	1250W
Cooling Method	Water cooling and protection system
Supported Image Formats	PLT, DST, DXF, BMP, AI, Support AutoCAD, Corel Draw output directly
Cutting Software	Leetro engraving software
Interface	USB
Voltage	AC 110V - 240V, 50Hz or 60Hz

Overview	Specifications	Packing list	Warranty	Video & samples
----------	----------------	--------------	----------	-----------------

Terms & Condition of Purchase: After we receive PO from customer with stamp, we give PI for customer.

Lead Time: After receiving customer's deposit, within 3 - 10 days.

Wooden Box: There is total one wooden box.

LCM-RJ-1390-80W

Machine Dimension	72" x 50" x 44" (1820mm x 1280mm x 1120mm)
Machine Weight	704lb (320kg)
Package	Wooden box
Packing Size	87" x 67" x 45" (2200mm x 1700mm x 1150mm)
Gross Weight	880lb (400kg)

LCM-RJ-1390-100W

Machine Dimension	72" x 50" x 44" (1820mm x 1280mm x 1120mm)
Machine Weight	726lb (330kg)
Package	Wooden box
Packing Size	87" x 67" x 45" (2200mm x 1700mm x 1150mm)
Gross Weight	902lb (410kg)

LCM-RJ-1390-150W

Machine Dimension	72" x 50" x 44" (1820mm x 1280mm x 1120mm)
Machine Weight	770lb (350kg)
Package	Wooden box
Packing Size	87" x 67" x 45" (2200mm x 1700mm x 1150mm)
Gross Weight	946lb (430kg)

Overview	Specifications	Packing list	Warranty	Video & samples
----------	----------------	--------------	----------	-----------------

Comprehensive guarantee for 2 years except the wearing parts

24 - hour technical support by email or calling

User - friendly English manual for machine using and maintaining

Spare Parts Supports

We provide all replacement parts for all machines we sold, if you have a parts that break beyond warranty period, you could order it directly from us at reasonable prices. We would post the new parts with step by step instructions in PDF format on how to replace the parts to you.

Satisfaction Guarantee

For the items other than consumable products sold via www.Sign-in-China.com, we provide 24 months warranty after shipment. All the extra parts for equipment can be purchased from www.Sign-in-China.com.

We offer 14 days 100% satisfaction guarantee on all our machines. If you are not satisfied after receiving an item, Sign-in-China.com promises that, within 14 days after actual delivery of such an item, you are allowed to return the item to us and get complete refund, provided the returned item does not affect its subsequent re - selling and you also undertake the charge of returning delivery.