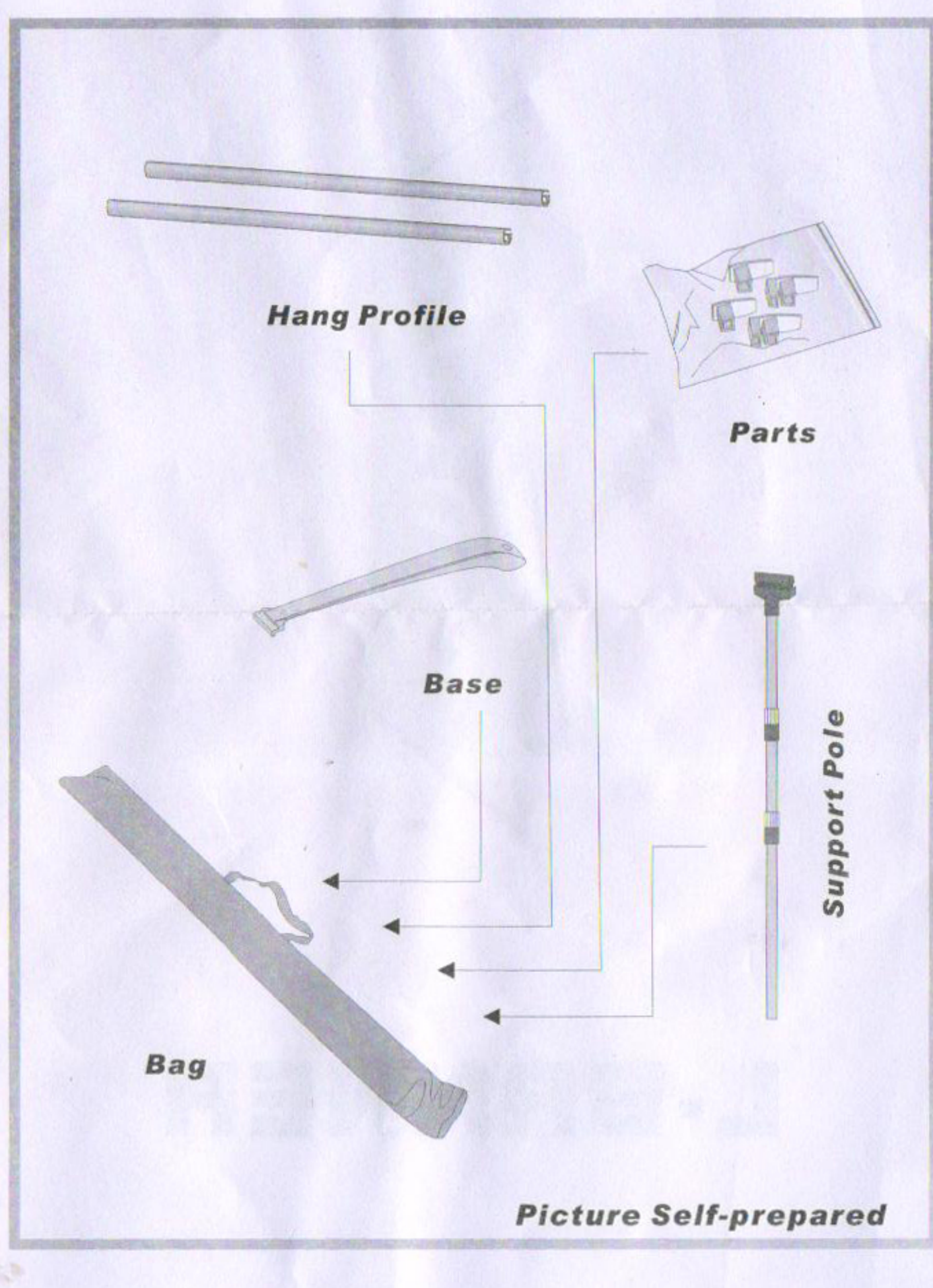




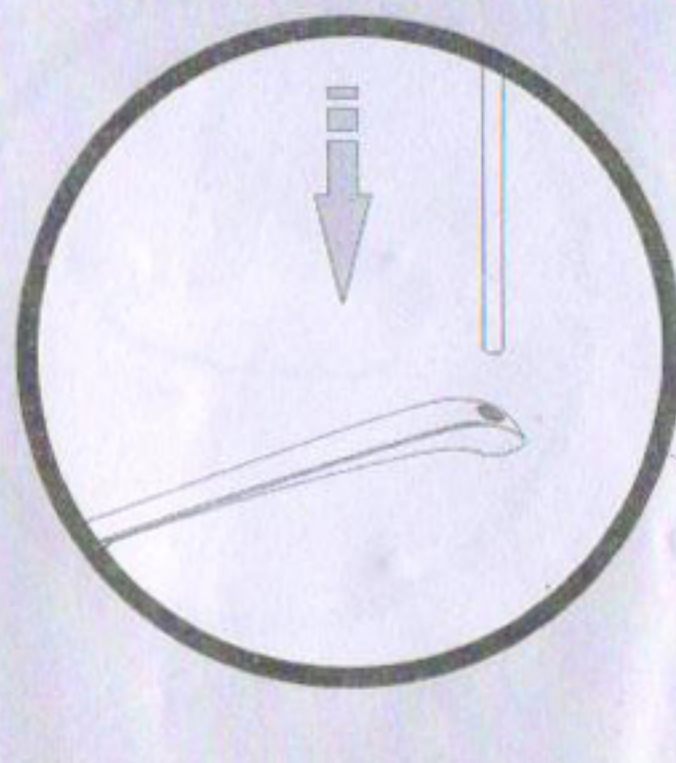
# L-BANNER

## POPULAR L BANNER INSTALL INSTRUCTION



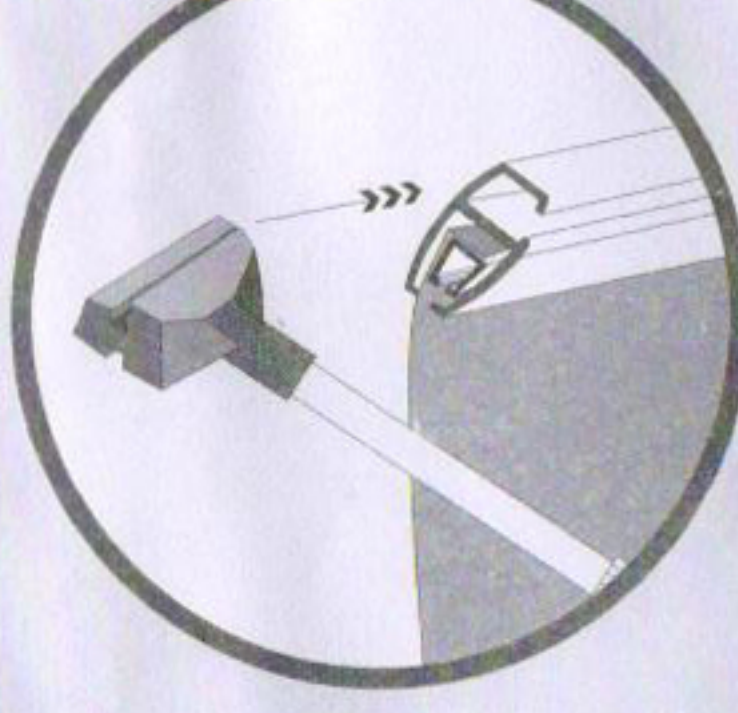
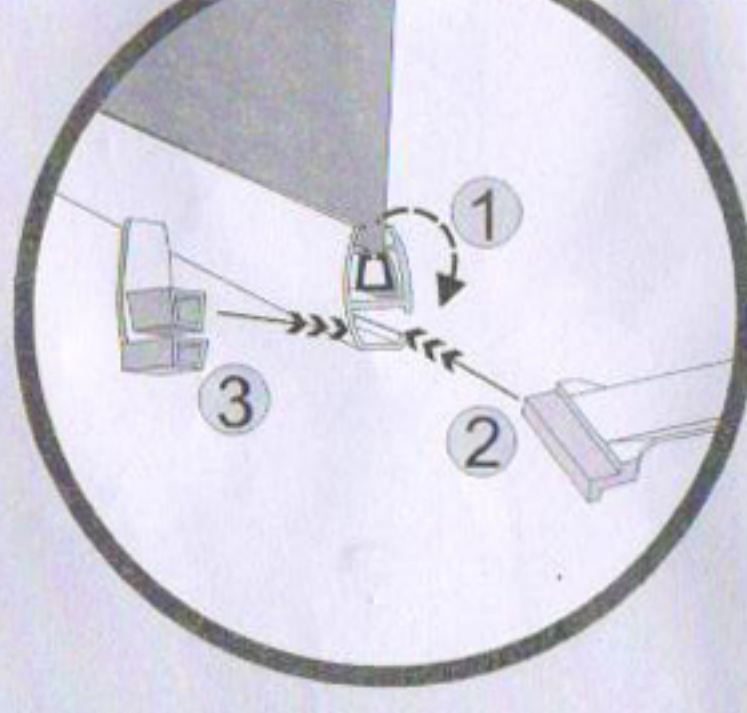
## POPULAR L BANNER INSTALL INSTRUCTION

### First Step...



① Insert the support pole into the hole on the base. (See drawing above)

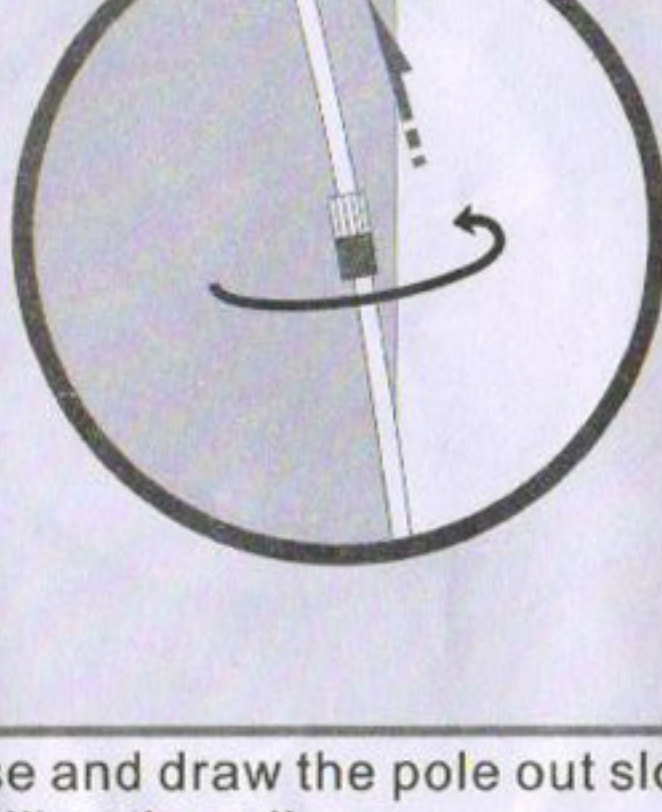
### Second Step...



② Stick the picture onto the plastic piece in the hang profile, then slide it into the channel slowly and fix the end cap. (See left drawing) Slide the top piece of support pole into the channel of hang profile.

## POPULAR L BANNER INSTALL INSTRUCTION

### Third step...



③ Screw the adjuster on the pole loose and draw the pole out slowly to suitable size. Then lock it by opposite scrolling the adjuster.

### Forth Step...



④ Now all is finished. In order to make picture smooth, maybe need to adjust a little.