

Excellent quality Sincere Service

# CHINASIGNS LIGHT BOX MANUAL

*For Chinasigns crystal light box only*

Version: A101001

## Chinasigns Crystal Light Box

### MANUAL

Dear Sir,

Thanks for choosing Chinasigns light box. Chinasigns crystal light box is combined by the technology of LED backlit diffuser board which is developed and operated by JUNLON itself with acrylic art. They are lighting evenly, high bright, elegant, power saving, super slim and easy to be installed. We have a wide products range: Double faces, single face, magic mirror, multi graphics, color changing and battery power type.

To Ensure can be understood well, please read this book before using our light box. With any questions, feel free to contact our service line.

**Sales line:** 86- 010-63705868

**Service line:** 86- 010-63705868

**Web:** www.sign-in-china.com

**E-Mail:** overseas16@sign-in-china.com

#### 1. Specification:

Model	Product	SPEC
<b>LB-LED-CA</b> <input type="checkbox"/>	Standard single side light box	A0 <input type="checkbox"/> A1 <input type="checkbox"/> A2 <input type="checkbox"/> A3 <input type="checkbox"/> A4 <input type="checkbox"/> R <input type="checkbox"/> other_____
<b>LB-LED-CSL</b> <input type="checkbox"/>	Standard double sides light box	A0 <input type="checkbox"/> A1 <input type="checkbox"/> A2 <input type="checkbox"/> A3 <input type="checkbox"/> A4 <input type="checkbox"/> other_____
<b>MLB-CY</b> <input type="checkbox"/>	Magic mirror light box	A1 <input type="checkbox"/> A2 <input type="checkbox"/> A3 <input type="checkbox"/> other_____
<b>MLB-CY-SG4</b> <input type="checkbox"/>	Multi-picture magic mirror light box	A2 <input type="checkbox"/> other_____
<b>LB-LED-HDL</b> <input type="checkbox"/>	Crystal battery light box	4R <input type="checkbox"/> 6R <input type="checkbox"/> 8R <input type="checkbox"/> other_____
<b>LB-LED-CUI</b> <input type="checkbox"/>	Crystal slim light box with engraving logo	A1 <input type="checkbox"/> A2 <input type="checkbox"/> A3 <input type="checkbox"/> A4 <input type="checkbox"/> other_____
<b>MLB-CY-GR</b> <input type="checkbox"/>	Crystal mirror light box with round shape	Standard Dia: 590mm other_____
<b>LB-LED-SM</b> <input type="checkbox"/>	Magnetic light box	A1 <input type="checkbox"/> A2 <input type="checkbox"/> A3 <input type="checkbox"/> A4 <input type="checkbox"/> other_____
Power supply: DC 12V <input type="checkbox"/> DC 6V <input type="checkbox"/> Other_____		
Pls use the power supplier which is supplied by Chinasigns.		

#### 2. Model & Size :

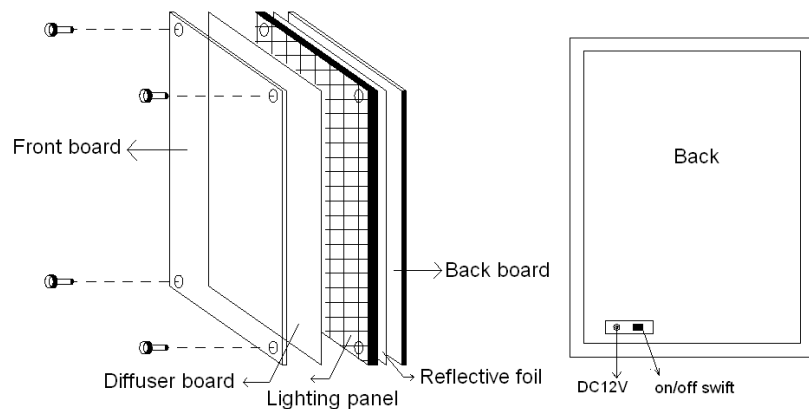
- 1) **Model details:** **LB-LED-CA:** Single side crystal light box; **LB-LED-CSL:** Double sides crystal light box; **MLB-CY:** Crystal magic mirror light box; **MLB-CY-SG4:** Multi-picture magic mirror light box; **LB-LED-HDL:** Table use crystal light with battery box; **LB-LED-CUI:** Crystal slim light box with engraving logo; **JL-SR:** Round crystal light box; **LB-LED-SM:** Magnetic crystal light box

#### 2) Size details: (unit: mm)

Model	Out frame size	Viewing size	Graphics size	Power
A0	900*1249	831*1179	841*1189	15W
A1	694*941	584*831	594*841	10.8W
A2	520*694	410*584	420*594	7.6W
A3	357*480	287*410	297*420	3.8W
A4	270*357	200*287	210*297	1.9W

### 3. Using and mounting:

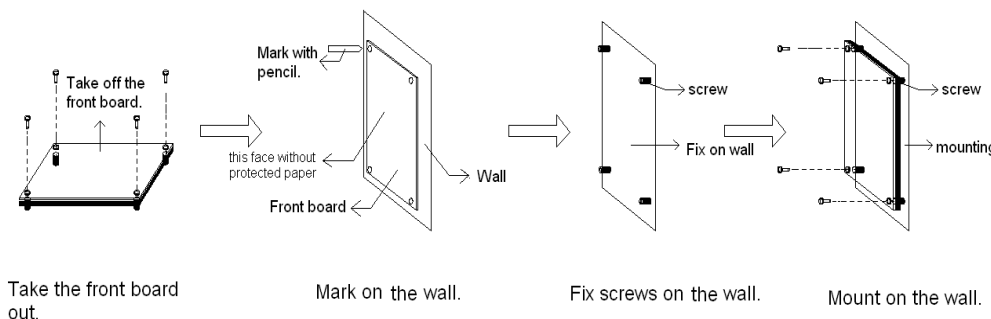
- 1) Using environment: a: Temperature:  $-40^{\circ}\text{C} \sim +50^{\circ}\text{C}$  b: Relative humidity:  $\leq 85\%$
- 2) Power supplier: Furnished with the light box
- 3) Mounting with correct parts.
- 4) Internal instruction:



### 4. Mounting step:

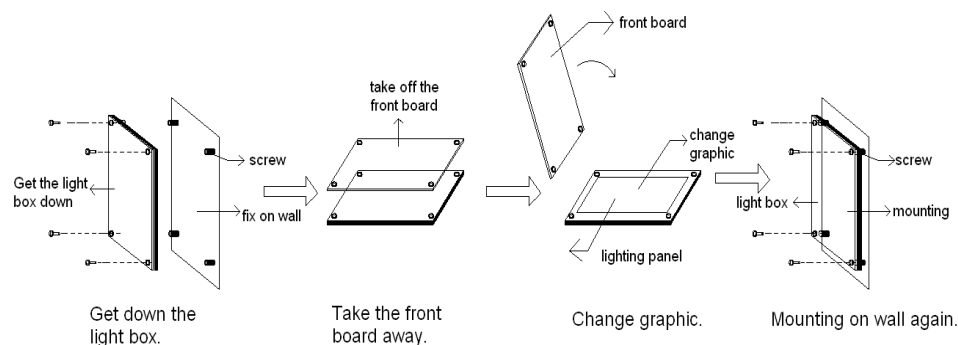
- 1) Take the packing apart. 2) Loosen the locking screws, and take the front board away.
- 3) Put the front board on wall, and mark the drilling location on wall by the screw holes of front board.
- 4) Drill holes according to your mark, and fix part of screws on wall.
- 5) Bunch the front board and lighting panel with another part of screws, and tighten to another part where fix on wall.
- 6) Rive off the front protected paper.

**NOTE:** When using front board on wall to mark, please choose the side with protected paper to keep the wall away, otherwise, will scratch the surface !



### 5. How to change graphic:

- 1) Hold the light box, and loosen screw. 2) Get the whole light box down, and put it on table.
- 3) Take out the front board, and change graphic.
- 4) Align the front board and lighting panel, mounting on wall again.



### 6. Characteristic and Warranty:

#### 1) Characteristic:

- a: Crystal craftwork, elegant and graceful;
- b: Soft and even light, graphic is nature with light;
- c: Easy to change graphics;
- d: LED light source, durable, average life can be 50,000 hrs.
- e: High luminous flux, brightness is close to T4, T5, TLC lamp;
- f: Power saving, 50%-80% power saving compare to traditional slim light box when in same out frame size;
- g: Environmental protection, most material can be reclaimed;
- h: Room saving. Whole thickness is less than 16mm; the thinnest place is 10.5mm only. Can use for different public place.

2) Warranty:

i Warranty: One year.

ii Chinasigns will be impunity when the light box is damaged because of any of below reasons ( but can choose paying service):

a: Due to using wrong power supplier or adapter to burn the electronic part off.

b: Repair by yourselves or others without reasonable ways.

c: The damage is because of natural calamities, war etc accident beyond control.

**7. Maintenance:**

1) Crystal light box is used LED as light source, high temperature and humidity will cause working out of way, please notice:

a: Don't let the sun shinning directly to this unit;

b: Don't use this unit in place where there is flammable or explosive gas and near water (humid) place.

c: Don't use this unit in place where there is vibration or impact.

2) Maintenance:

a: Crystal light box is friable, so, do not press on the surface, otherwise, the crystal board will be broken. And also be careful during shipment or movement.

b: Please put on gloves to avoid leaving fingerprints on the surface of even panel or mirror when install or move the product. Can use alcohol and water in scale 1:1 to clear the surface when dirty.

c: Make use it is power off when cleaning this unit.

**Thanks for your support, and hope Chinasigns' light box will  
make your life brighter !**

Chinasigns customers service dept.

Note: The power of interpretation of this manual shall be vested Chinasigns service dept.

