

# **RS Series Cutting Plotter User Manual for USB Port**

# User Manual

## (USB Port)

In order to perfect our products, we add another port called USB Port. You can connect your computer and cutting plotter with the USB cable we offered, it is easy to operate and useful. At the same time, you have one another choice.

## Installation of USB Drivers

### First Install the Cutting Plotter USB Driver

- 1 Run the USB Driver from the CD.



- 2 Click “OK” to complete the installation of the USB driver.



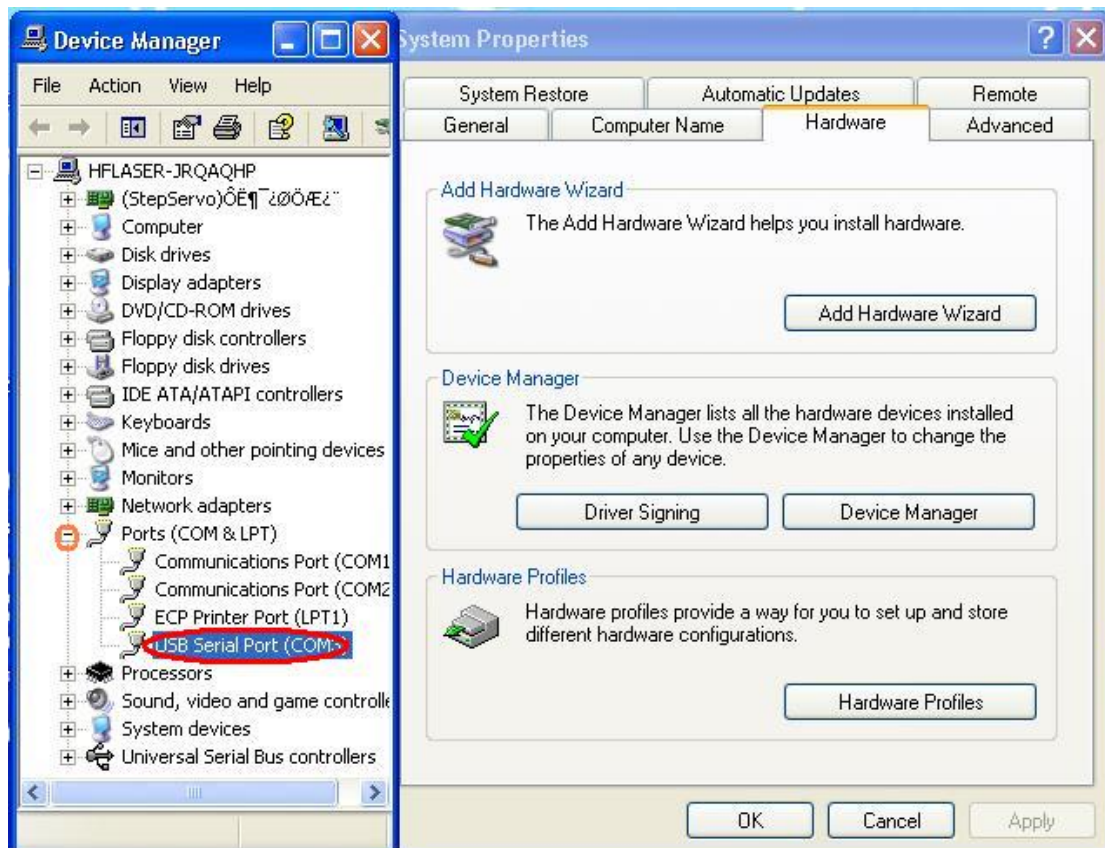
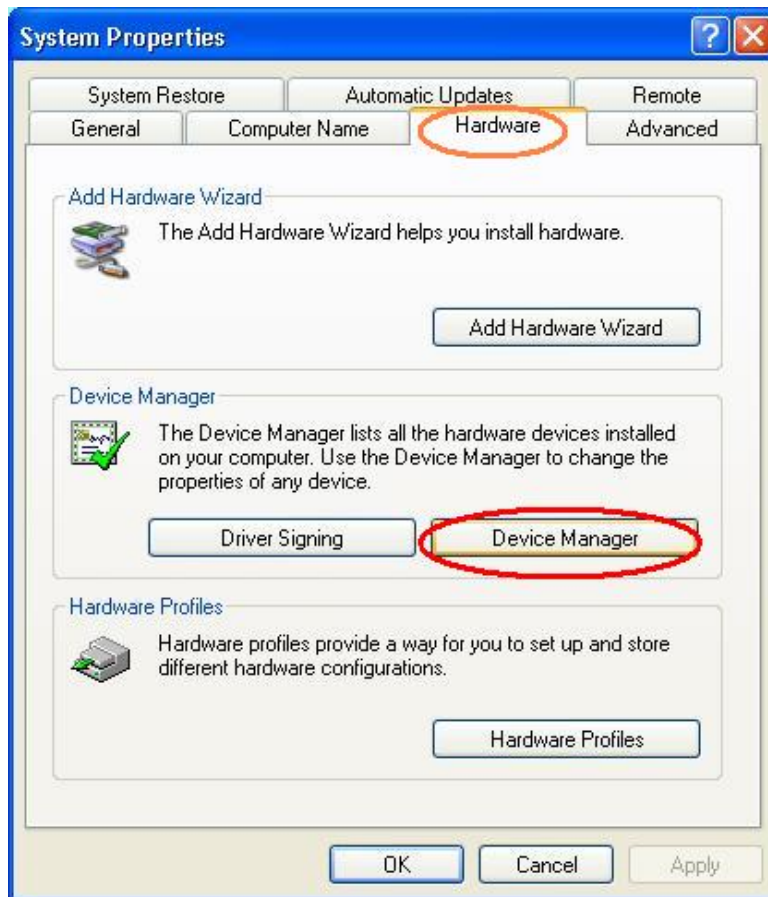
After the installation of USB Driver completed, next, we will learn how to use the USB Port. Since “Artcut 2009” belongs to the standard accessory, we can take it as an example.

## **Second     Output from Artcut 2009 with USB Port**

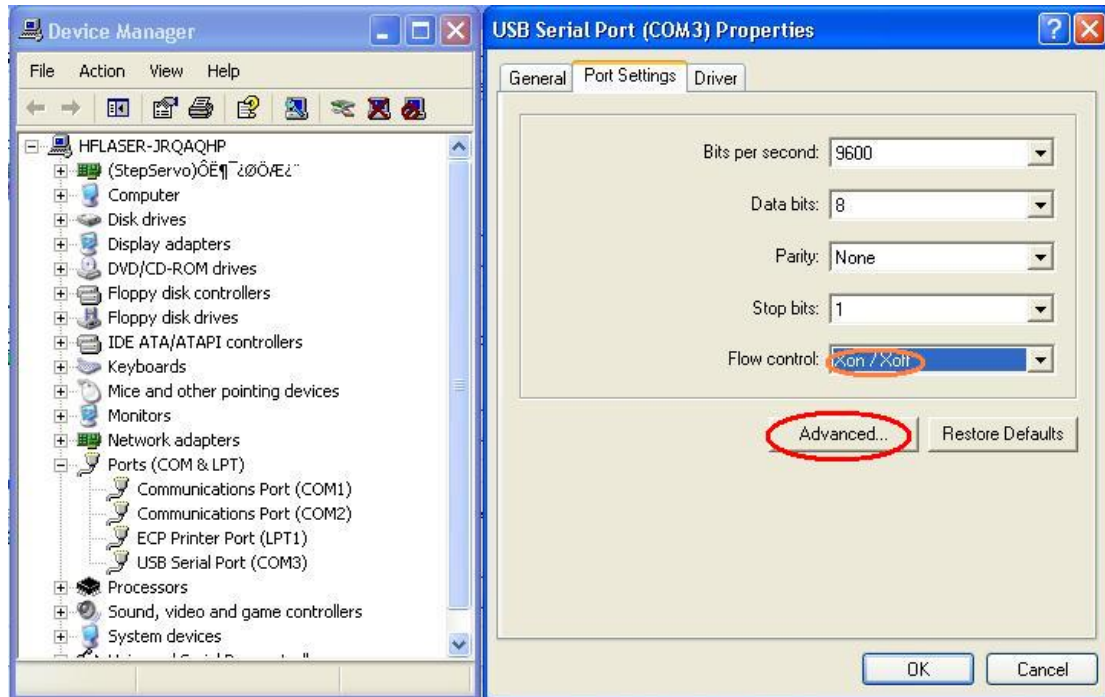
1. Connect the computer and the cutting plotter together and install the Artcut2009 Software to your computer. Our USB port can support hot plug in/out. You can plug in /out except the state of online work. However, you’d better not plug in/out in normal condition.
2. After connecting the cutting plotter and the computer, you can follow our diagram step by step and finish the settings of the computer.
  - 2.1 Click the right key of the "Mouse" on the icon "My Computer", then click "Properties", the following dialog box will appear.



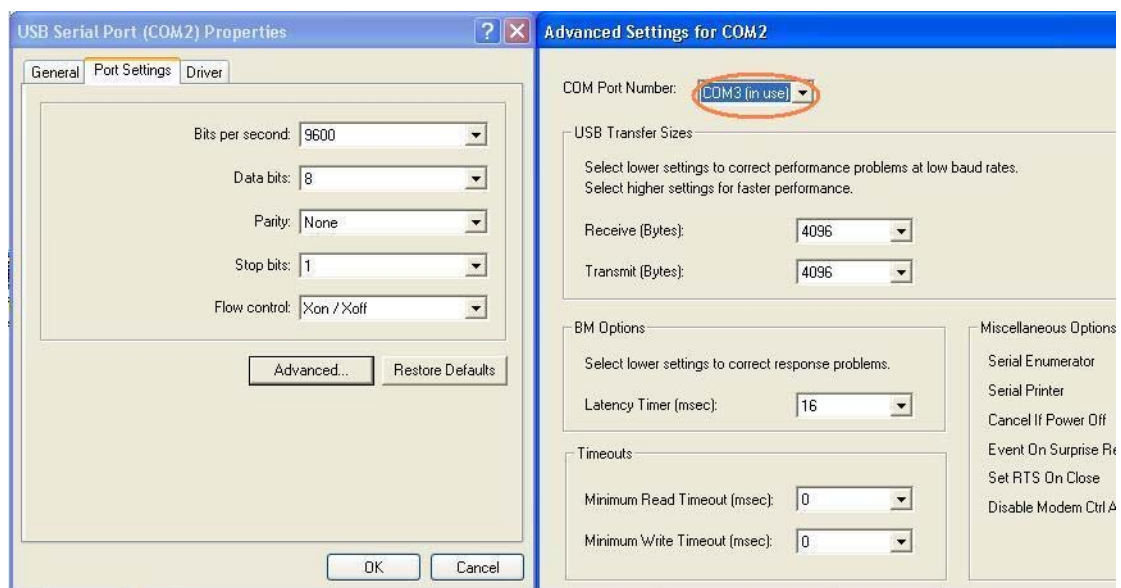
- 2.2 Select the "Device Manager" in the "Hardware" and single click the sign "+" which is on the left side of the Ports(COM and LPT), you can see the option "USB Serial Port(COM X), X refers to 1,2,3...", as shown in figure.

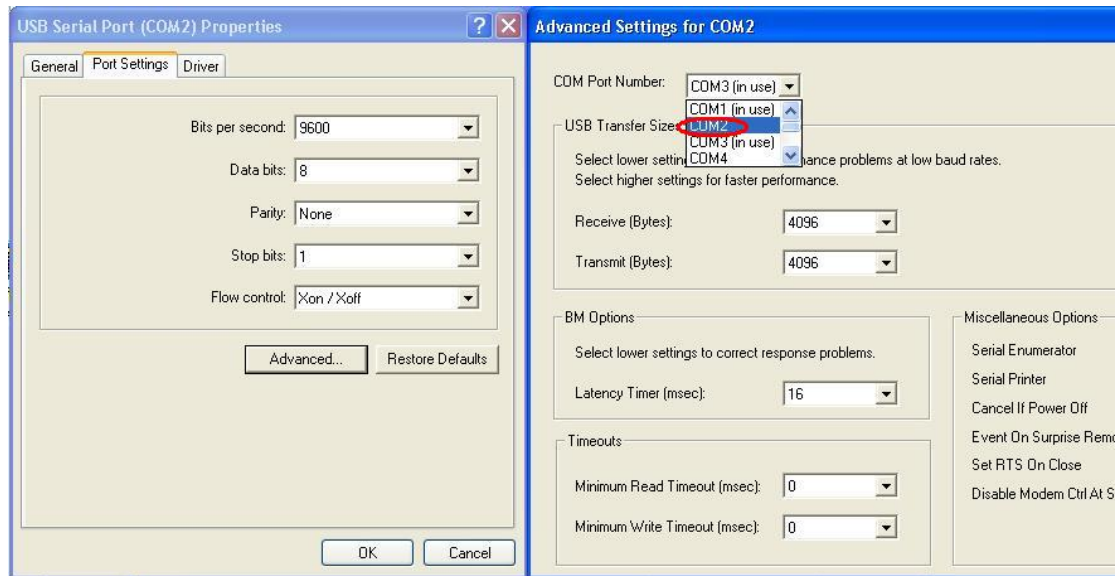


2.3 Double click Left key of the Mouse, and select "USB Serial Port (COM X)", then select the "Port settings", next, select "XON/XOFF" in "Flow Control". As shown in figure.

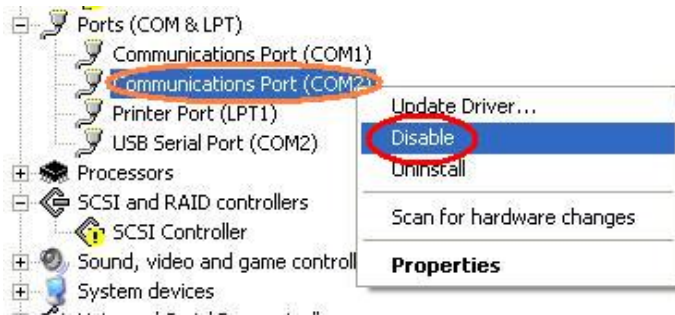


2.4 Select "Advanced...", then select "COM1/COM2" in the "COM port NO." of the "Advanced Settings for com port", as shown in figure.





2.5 Then the “Communications Port (Com 2)” will be disabled because you have chosen a port of Artcut 2009.

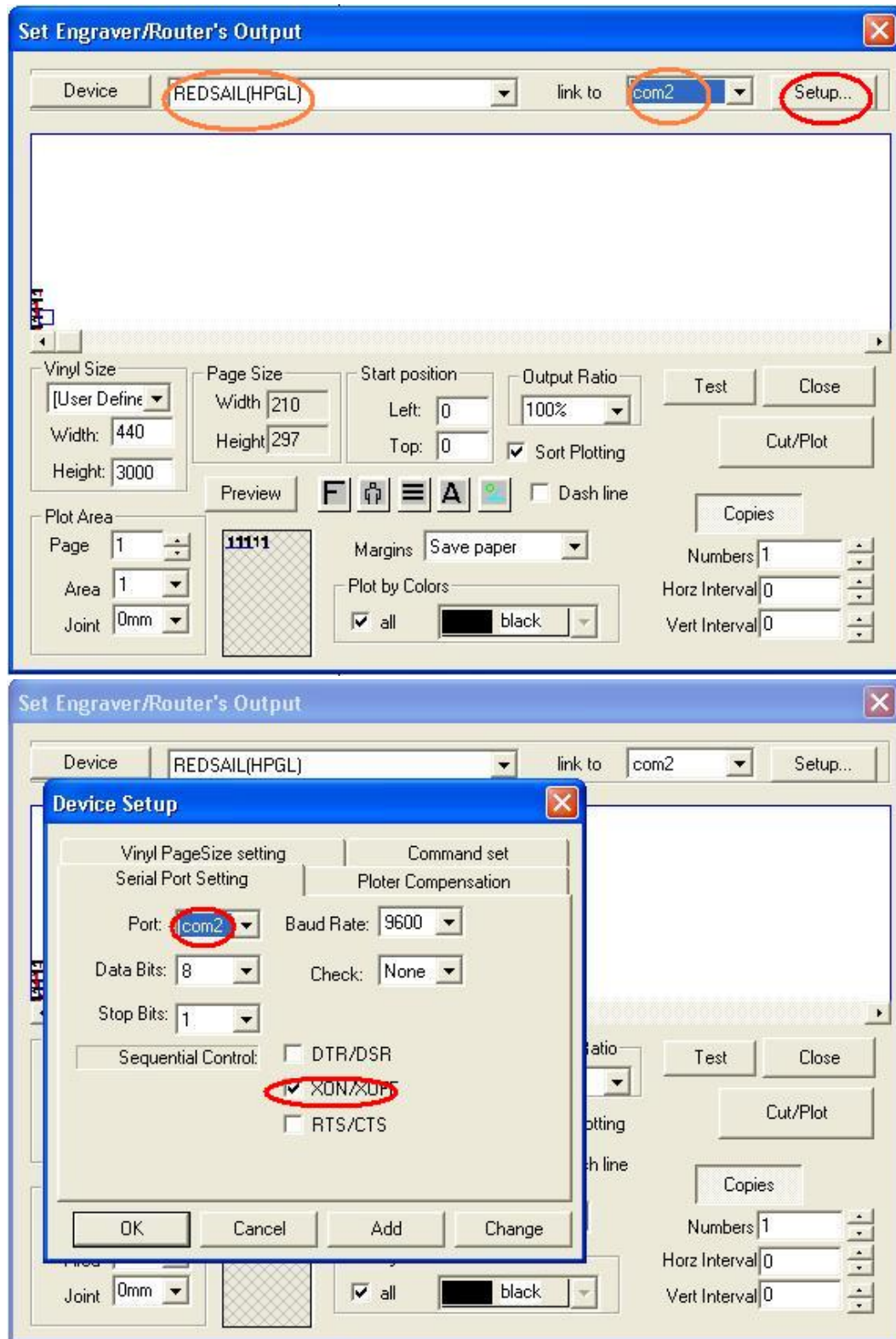




3. After the setting of the computer, you need set in "Artcut 2009" and the settings in "Artcut 2009" should come in line with the settings of the computer.

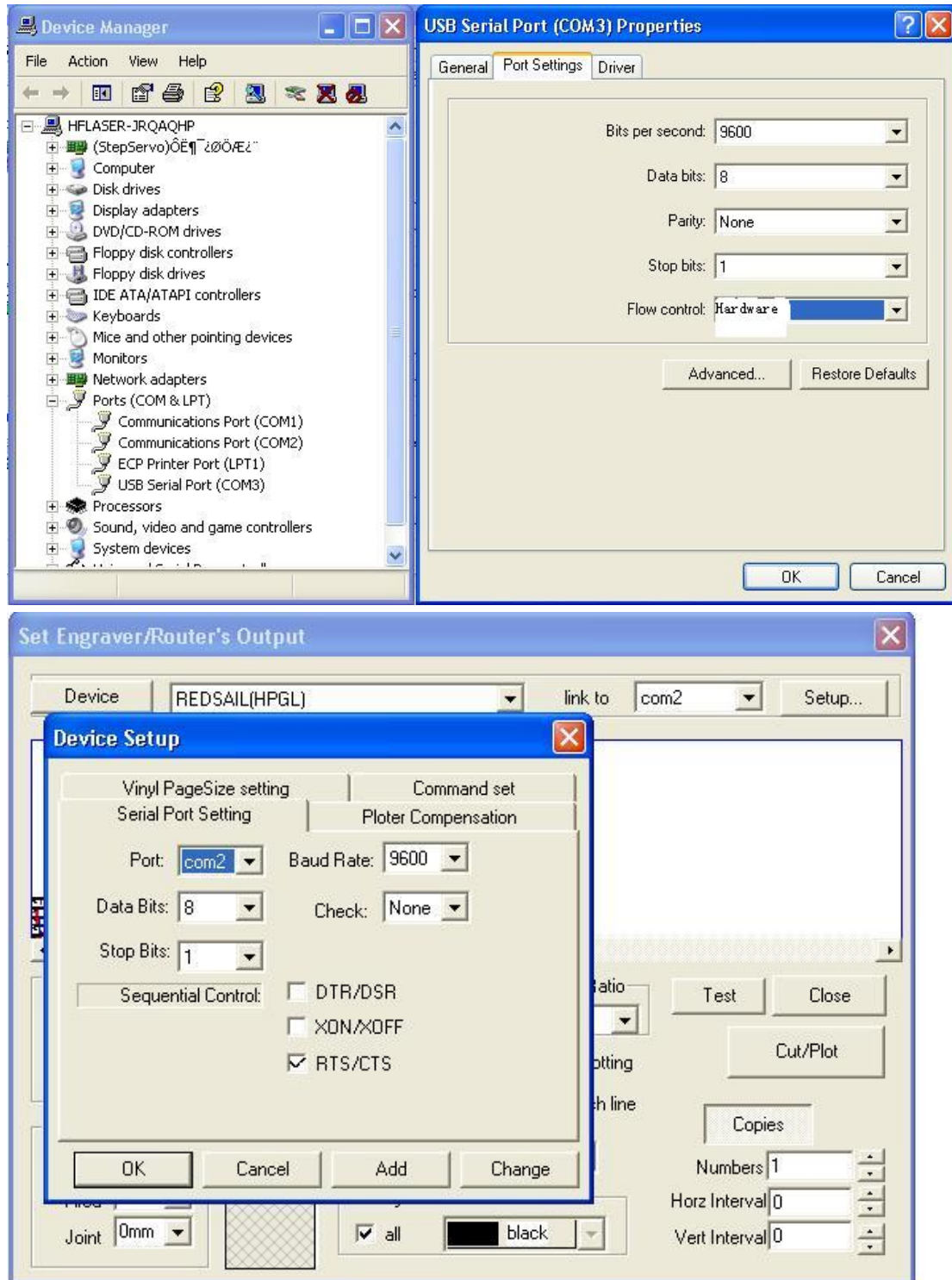
3.1 If you choose "COM2" as the output port in the computer's properties, you also should choose "COM2" in "Artcut 2009". The same with that, if you choose "COM1" in the computer, you also should choose "COM1" in "Artcut 2009". As shown in figure.





3.2 Similarly, if you choose "XON/XOFF" in "Flow Control" of the

computer's properties, you also should choose "XON/XOFF" in "Artcut 2005". If you select "Hard Ware" in your computer, according to this, you should choose "RTS/CTS" in "Artcut 2005".



After above settings, you can out put from USB successfully.