

# User Manual

## (Multi-language LED Desk board)

Type: C1664R  
Version: 6.02




## 1. Summay

### 1.1Accessory



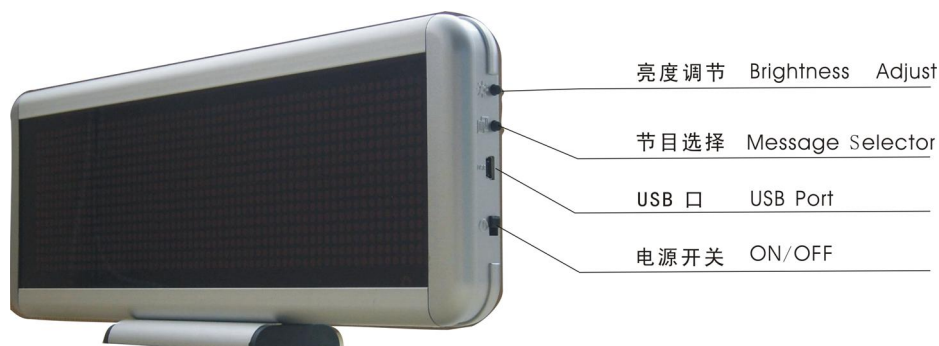
## 2. Features:

- 1) 16\*128 dot matrix.
- 2) Multi- language. It displays 16 Western characters or 8 Asian Characters.
- 3) 6 Text Message, each of them displays 250 western characters.
- 4) 2 Images Message (max.384x12 pixels. It's better use black font with white background BMP image.
- 5) 11 twinkled animations embedded and a brightness font.  

- 6) It's easy to select run sequence of 8 messages and adjust to the brightness (25%, 50%, 75%, 100%)
- 7) The Software uses Under Windows Vinsta/XP/2000/98.
- 8) Large capability Poly-lion Battery with 2500mAh.Recharging 2 hours when it will work more than 10 hours.
- 9) Single mini USB interface for charging and communicating.



### 3. The keys and interfaces of LED Desk board

There are 4 buttons on the right of LED Desk Board. Any detail information as below:



**Attention: The RS232 port is easy to broke, please input it carefully or it maybe can't charge and communication.**

#### 1.1 Switch On/Off your Desk Board

Firstly, make sure the battery with electricity before usage. Turn on the switch, and the pre-stored message will run automatically. The switch turned off or the battery used out, the badge will turn off automatically.

#### 1.2 How to use your LED Desk Board

It used widely in public house, meeting room, shopping, In front of the Supermarket and so on.





The following Bracket can be chosen if you want.

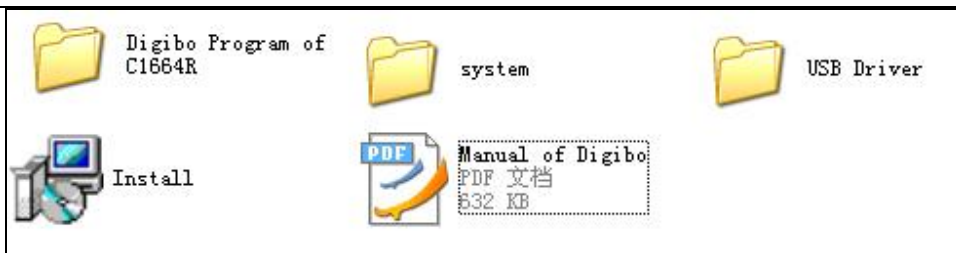


#### 4. Operation Software

Edited message can be sent to Desk Board through USB Communication. All contents of CD-ROM as following:

- 1) Click on the CD-ROM, then some files showing:





Firstly, click on , then appear

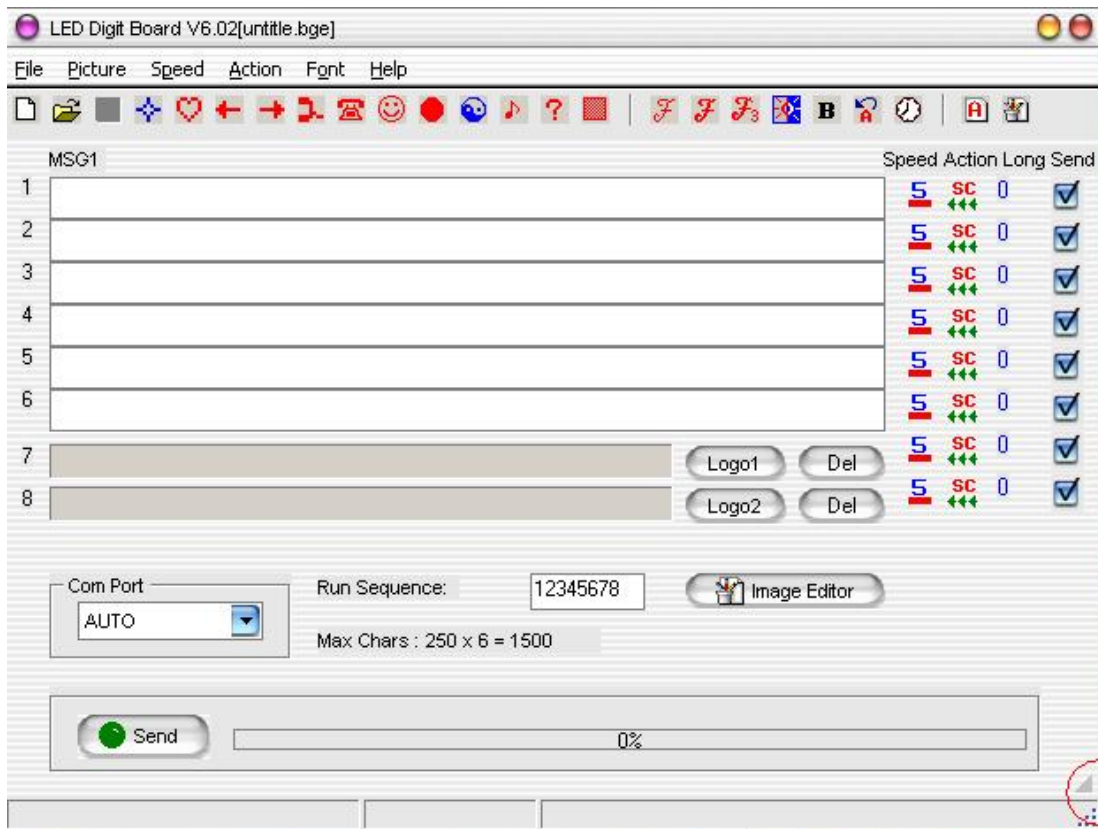


Secondly, install the Software and usb driver(automatically by itself). Then in the surface

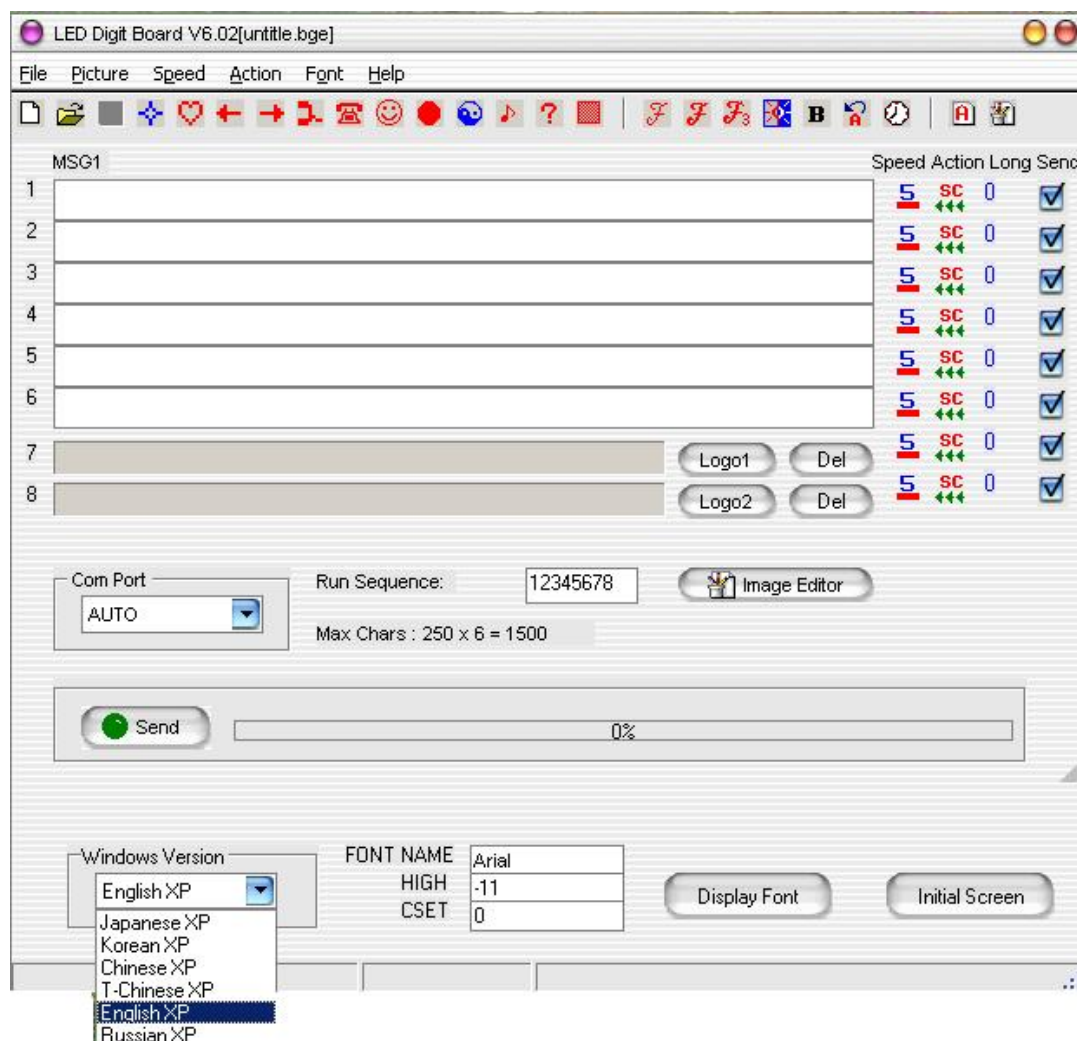


of desk will pear

click on it, The edition will be stared.



2) Please click on the right Tri-angle Logo if you want to choose another language or setup character size.




3) From the first to the sixth text message which is edit message. The rest two is LOGO editing.

Input message

1> Text Message: Editing directly from the first one to the sixth.

2> Input animation on the Text message when cursor staying in that place. Then click on the built-in animation, it will be inserted. Notes: on the Text Message, animation displays its code.

3>Speed, Staying Time, Action

4> How to make single letter act. It is the function which is some letter or some paragraph jump except the normal 5 actions. Insert  "Logo before or back the letter or font. Text message only displays code.



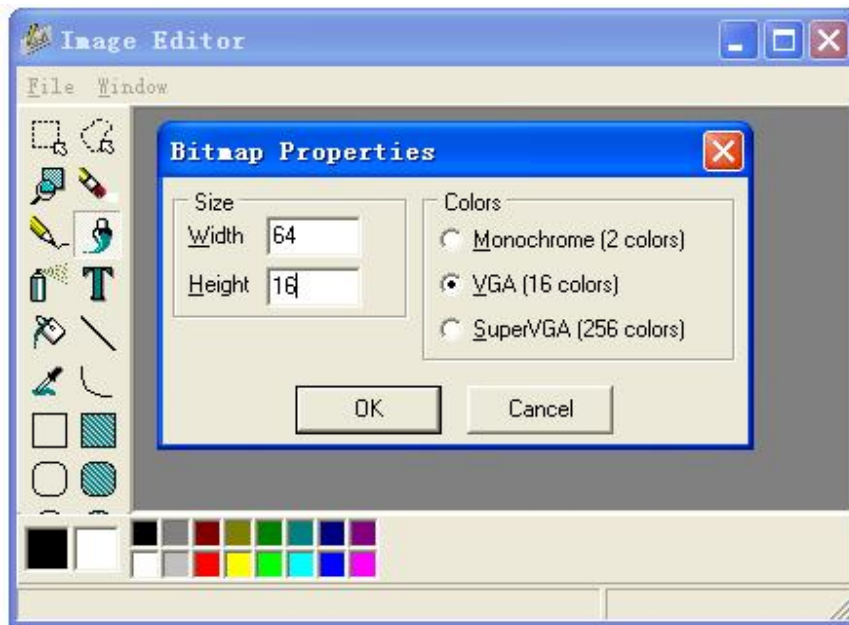
**www.Sign-in-China.com**

Online Shopping for AD & Signage Products

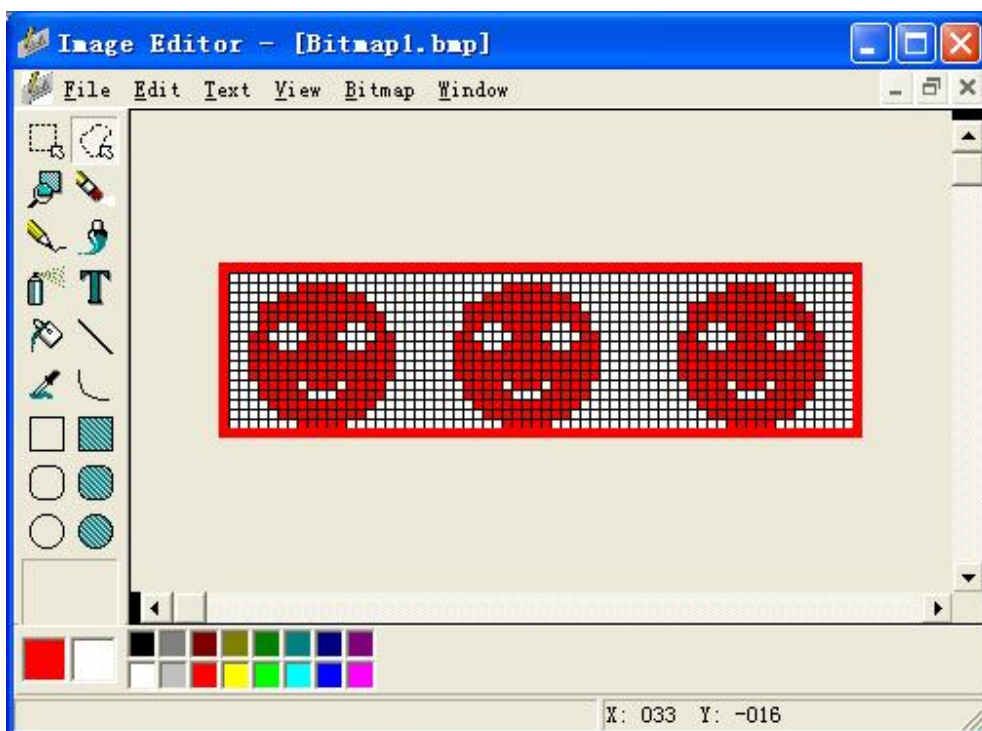


6) Edit Image. It can be input 2 pieces of LOGO Message. Please click on the Image that means to choose. Click on "Del" that means to delete.

1> Logo message usual form is BMP File. It is better use black letter and white background. Dot matrix is within 384. The length is not limited. But the software only can deal within 12 dot matrixes.



2> How to edit Image File. The software enclosed like ImageEditor.exe. Please click on the button of Image Editor. Save edited image to Disk. Then use the function of image to choose.



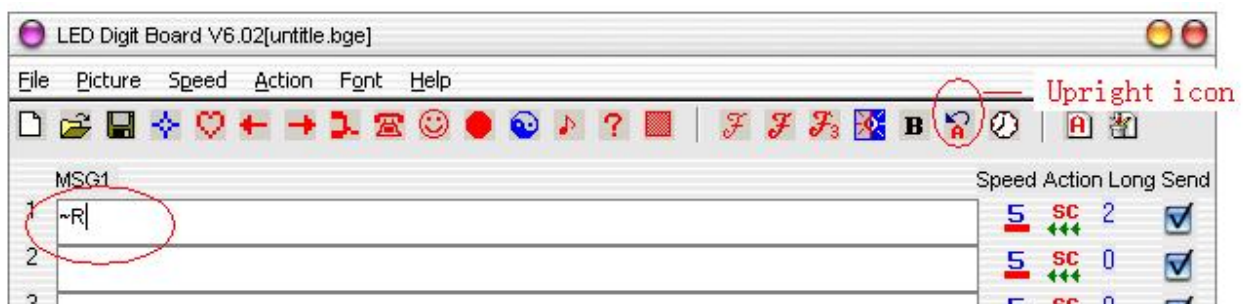
3> 8 Run sequence. It supplies a function of redefined message sequence. For example, 87654321 or 6327 are both right sequence which is accordance with message sent or chosen.

## 5.Communication:

- 1) Connect the Desk Board USB Port to the computer one. Then click on the Editor, sending them after editing finished. The message will be uploaded to Desk Board directly.
- 2) Choose **port**. It is usually based on your fact to choose. If using dummy USB port, the software will setup AUTO or setup COM3. If using port communication cable, it usually use AUTO.

## 6.Special Function

- 1) Desk Board can display upright way. Click on the icon will be come out. Please refer to the following **picture 1**.



2)Picture 2

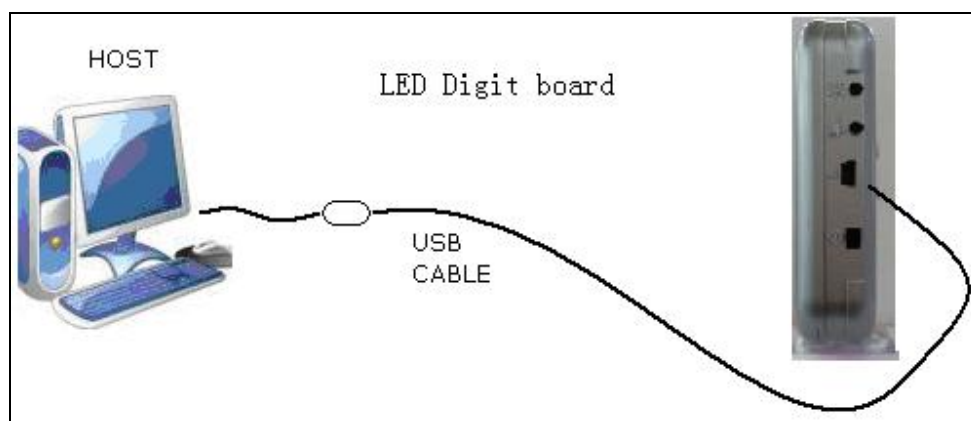






### 3) Connect it to the computer

Any detail process, please refer to the following picture.



Communicating and charging

### 7) Charge



Charging time is about 3 hours if it is use out of electricity.



---

Turn on the Desk Board, then connected to the computer. At that time, the screen will display charging icon which is showing current electricity capability. After finished, the screen will display full charging icon.

The last step is separate Desk Board from charger or the computer. Turn off it.

Notice: long time charging has no any effect on the life-span of battery.

===== Thank you for using it =====

