



## Sample-Roland DX4 Printhead Manifold/Adapter

Item Code: ACC-ROL-054

Mini Order: 1 set (2pcs / set)

Average Rating: lb (kg)

[Inquire Now](#)

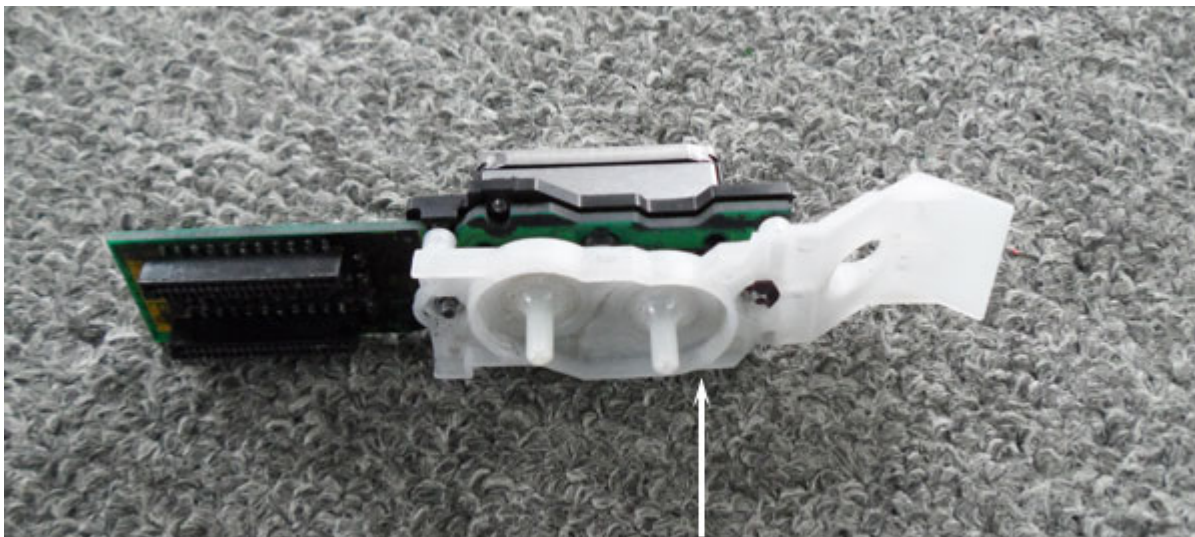


### Overview

#### **DX4 Solvent Printhead Manifold/Adapter 2pc/set**

##### **To be used with:**

Roland SJ-540, Roland SJ-645EX, Roland SJ-655EX, Roland SJ-740, Roland SJ-745EX, Roland SJ-1045EX, Roland SJ-1000, Roland SC-540, Roland SC-545EX,  
Roland SP-300V, Roland SP-540V, Roland VP-300I, Roland VP-540I,  
Roland XJ-640, Roland XJ-740, Roland XC-540, Roland XC-540W, Roland XC-545MT,  
Roland RS-640,  
Mimaki JV4, Mimaki JV22, Mimaki TX2, Mimaki JV3 (JV3-130, JV3-130sp, JV3-160, JV3-160sp, JV3-250, JV3-250sp etc.)  
Mutoh RH-II(Falcon2), RH-3, Spitfire 65, Spitfire 90, Blizzard 65, Blizzard 90, Mutoh RJ-8000, Mutoh RJ-8100



Suitable for all large format printers with Epson DX4 printhead

New white printhead adapter

1. Solvent resistant for all using life.
2. More flexible material are adopted to avoid breaking.
3. No leaking any more by the unique welding technology.
4. Extra rubber ring with the printhead adapter to make sure it fit perfectly with your printhead.

**Packaging details :**

Unit Type: pc

Produce Weight: 2g

Package Weight: 15g

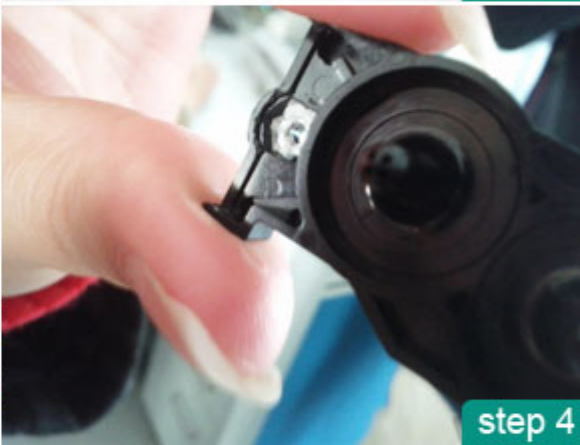
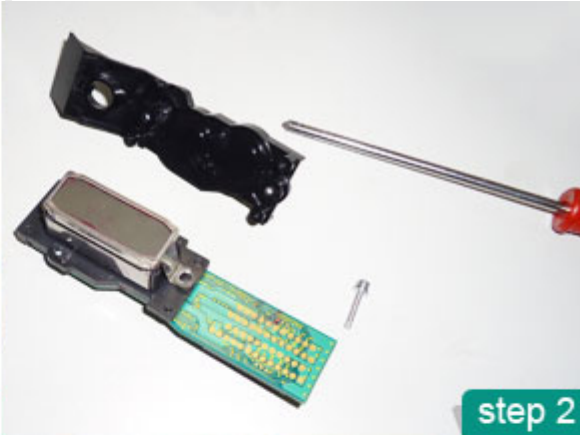
Produce Size: 75mm x 25mm x 20mm

Package Size: 120mm x 70mm x 30mm

**Remarks: OEM**

**Replace the manifold:**

Solvent resistant manifold suitable for Epson DX4 printheads. By replacing this manifold, you can turn a water based Epson DX4 printhead into a solvent resistant part suitable for Roland, Mutoh and Mimaki solvent printers. This manifold is sold together with the rubber ring necessary to adapt to a print head.



---

## Tags

---

[Roland DX4 Head Adapter](#) [Roland DX4 Print Head Adapter](#)

---



NETSUITE®  
ONE SYSTEM. NO LIMITS.

PayPal™



Member  
INTERNATIONAL  
SIGN ASSOCIATION



Member  
Specialty Graphic Imaging Association



ACCREDITED  
BUSINESS

Copyright © 1999-2012 by Beijing ChinaSigns Information Company Limited All Rights Reserved.

Email:info@sign-in-china.com Tel:+86 132 6410 3286 www.sign-in-china.com