



P4.75 Indoor integrated 3 in 1 Full Color Screen

Item Code: FC-LJ-P P4.75integrated



FOB Price: **\$7,108/sq.m**

Mini Order: 1 set

Average Rating: 1b (kg)

[Inquire Now](#)

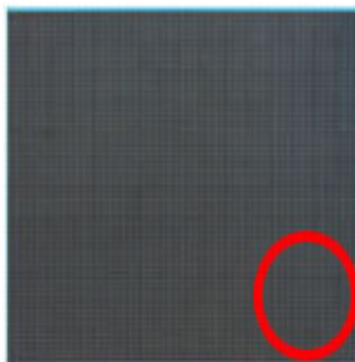
Overview

Description:

3 in 1 Integrated full color screen is our patented product. It has color blending ability, high brightness and a wide viewing angle.

- With the highest resolution among indoor displays and the best exhibition effect, vivid pictures and ability to display real color in small areas (2~10 sq.m).
- Highly integrated, especially bright, wide color gamut, long lifespan.
- Adopting LED chips and plastic shell suite.
- The installation and assembly is fully automatic.
- It comes with a professional colorimeter to adjust the color temperature.

Details:



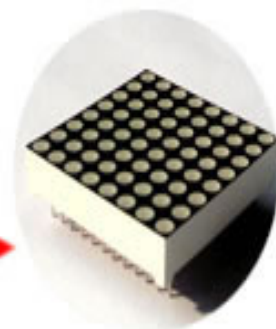
Name: Lnk-ID4-RGB-16l

Size: 512mm×384mm×120mm



Size: 256mm×128mm

Resolution: 64×32



Pixel pitch: 4mm

Size of pixel: 3mm (circle)

Free training: We will provide free training of how to maintain and repair. And you can send your staff who have

electronics knowledge to our factory to receive training.

Details

| | |
|-------------|--------|
| Environment | Indoor |
|-------------|--------|

Specifications

Specificaton:

| | | |
|--------------------------|--|---------------------------|
| Pixel pitch | 0.2" (4.75mm) | Size of pixel |
| Size of block module | 1.5" x 1.5" (38*38mm) | Pixel of block module |
| Size of module | 12.0" x 6.0" (304 x 152mm) | Resolution of module |
| Size of cabinet | 23.9" x 18.0" x 4.7" (608 x 456 x 120mm) | Resolution of cabinet |
| Area of cabinet | 0.0333 sq.m | Density of pixel |
| Pixel configuration | 1R1PG1B | Best viewing distance |
| Brightness | ?1500cd/ sq.m | Maximum power consumption |
| Horizontal viewing angle | 140° | IP grade |
| Driving device | constant current | Driving method |
| Colors | 16777216 | Color temperature |
| Gray scale | 14 bits | Refresh frequency |
| Control method | Synchronization | Working temperature |
| Frame frequency | ?60Hz | MTBF |
| Working voltage | AC220V/110V±10% | Life span |



Copyright © 1999-2012 by Beijing ChinaSigns Information Company Limited All Rights Reserved.

Email: info@sign-in-china.com Tel: +86 132 6410 3286 www.sign-in-china.com