



Sign-in-China.com
One Stop Solution For AD signs

Eco Solvent Large Format Printer 64"(1600mm)

Item Code: LFIP-LCSJ1600



FOB Price: **\$8,097/set**

Mini Order: 1 set

Shipping Weight: ★★★★★

Average Rating: 673.2lb (306.02kg)

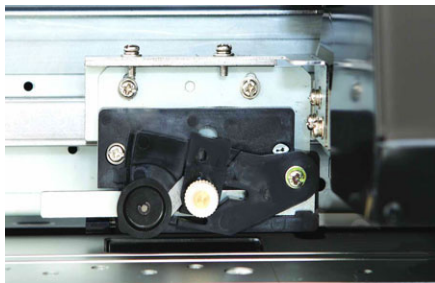
[Inquire Now](#)

Overview

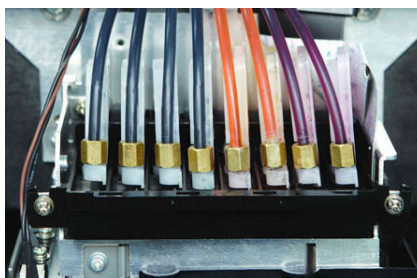
FREE: Photoprint RIP & Original Accessory Kits

Description:

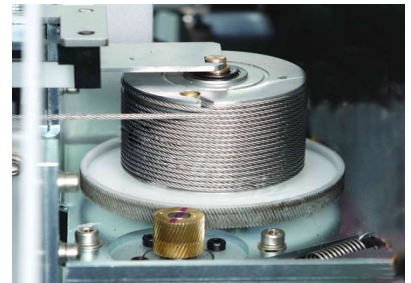
The LFIP-LCSJ1600 is a 1.60m wide format eco-solvent ink printer. This printer adopts DX5 piezo printheads which is 1.0" (24.4mm) wide and 8 lines of nozzles; every line contains 180 nozzles, with a total of 1440 nozzles.



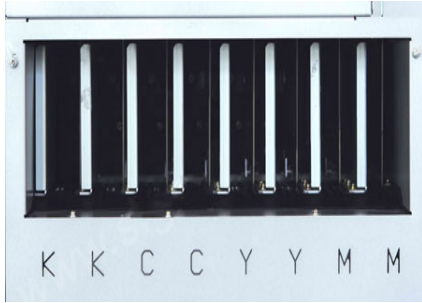
Auto-cutting paper system



DX5 piezo print head (24.5mm wide) with 8 lines of nozzles



Gear-occlude



Input mode of dual 4-color



High quality fluid damp



THK guide rail

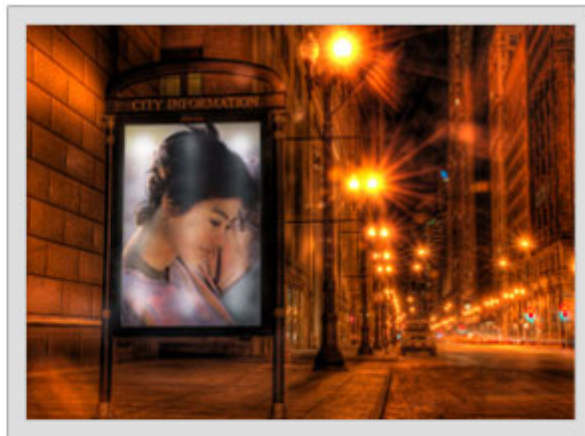
Characteristics:

- . High transmission precision and long lifespan for precise gear-occlude directly transmission is adopted.
- . Thanks to the THK guide rail the printer produces low noise during the printing process. High durability printer.
- . Adopts advanced variable dot print technology; the minimum dot reach 3.5pl, maximum 27pl.
- . With particular two-dimension intelligent eclosion and wave eclosion print function could avoid Banding in printing process.
- . The printer has an automatic cut system, in which the user can select between manual or automatic, saving time and labor.
- . The system supplies 6 different printing pass modes. The users can select various materials and printing qualities
- . The printer is equipped with eight 500ml cartridge,s which supply ink for one line nozzle separately, so it ensures output big heavy picture with high speed.
- . The printer takes the lead launching the quick drying ink, it dries immediately after printing.

Application:

Adopting standard 6-color or dual 4-color print which outputs delicately and colorfully, it is suitable for advertising production and other high demand for multicolor output.

Samples:



Specifications

Product parameter			
Model	LFIP-LCSJ1600		
Print head	MicroPiezo Printhead Epson DX5		
Ink	Eco-Solvent ink		
Color mode	Dual CMYK		
Nozzles	(180nozzles*8lines)*1head		
Print head height	0.1" (1.5mm)/0.1" (2.5mm)(Adjustable)		
Ink supply method	Block brake type cartridge		
Feed paper method	Multi-press feed paper		
Usable materials	One way vision, adhesive vinyl film, cold laminating film, outdoor light film, banner cloth, photopaper.		
Cut	Auto/Manual		
Max material width	64.0" (1625mm)		
Max printing width	63.6" (1615mm)		
Min printing margin	0.2" (5mm)		
Printing resolution and speed	Resolution(dpi)		Speed
	540*720(6pass)		11m2/h
	720*720	4pass	16m2/h
		8pass	8m2/h
	1440*720(8pass)		3.4m2/h
	14440*1440(16pass)		1.7m2/h
Roll outer diameter	2(In.)/3(In.)		
Material	Single paper(feed front), Roller paper(feed rear)		
Maximum weight for roll material	88.2lb (40kg)		
Interface	USB 2.0/ Hi USB		

RAM		128M
Roller		Option
Printing language		Standard printer languages
Power		AC100-120V/AC220-240V(Adaptive),50/60Hz±1Hz
Power consumption	Printing mode	100W
	Standby mode	40W
Acoustic noise		?50dB
Environment		Temprature:20-32°C, Humidity:40-60%(Non-condensing)
Dimension/Net Weight		95.7"*29.5"*49.2" (2430*750*1250mm)/343.9lb (156kg)
Packing size/Gross Weight		102.8"*34.4"*26.4" (2610*875*670mm)/474.0lb (215kg)

Tags

[64" Eco Solvent Large Format Printer](#) [Eco-Solvent Large Format Printer](#) [large format eco solvent printer](#) [eco solvent printer](#) [wide Format Printer](#)

QA

Q	I also need information like the software Rip,	
A	The software of the printer is MAINTOP DTP&PS RIP . And it is also compatible with Wasatch , if you want, you could buy in your market or from us.	Reply by sign-in-china
Q	Could you supply ICC profile for its ink?	
A	we could supply ICC profile	Reply by sign-in-china
Q	what about your support trainings,?	
A	We provide the online video service, or making file with pictures or videos with the solutions to send to our clients, even we could send the technician to the client's country immediately, so you will never worry about the aftersales issue.	Reply by sign-in-china



Copyright © 1999-2012 by Beijing ChinaSigns Information Company Limited All Rights Reserved.

Email: info@sign-in-china.com Tel: +86 132 6410 3286 www.sign-in-china.com