



Sign-in-China
Online Shopping for AD & Signage Products

63" Semi-auto Master Mounting Wide Format Cold Laminator

Item Code: FMJ-1600-II plus

Mini Order: 1 set

Shipping Weight: ★★★★★

Average Rating: 561.0lb (255kg)

[Inquire Now](#)



Overview



Semi - auto cold laminating machine (Automatic take - up rolls of back paper), with functions of single sided cold laminating and

mounting by electric.

This Laminator is a great add - on to any sign shops that need a Professional Cold Laminator for various sign making needs. Easy to use and Guarantee a quality result each time. Good color reducibility and light transmittance, free of bubbles and snowflake point! It saves manpower and is easy to operate. A perfect fit for entry level customer, who is looking for an affordable and professional cold laminator for their projects. This new model can be widely used for pre - masking vinyl graphic, mount prints on substrate, over laminating inkjet prints and so on.

Features:

- Great for mounting prints to boards
- Over laminating digital prints
- Applying application tapes, applying double side adhesives and vinyl
- Solid built, laser - cut steel structure
- Free heavy duty floor stand with caster wheels
- 3" core auto - grip rollers for easy laminating film setup
- 5" bigger rollers for best quality laminating control
- Easy operation panel: Forward, Backward, Foot Pedal Control and various speed adjustments, Emergency Stop Button.
- Removable front worktable for easy film setup
- FMJ-1600-II plus is based on the theory of FMJ-1600-CIIZ, because we have the profound understanding of principle of laminator so a simple new laminator which is auto stripping and collecting back paper is developed.
- It has simple structure, reasonable, humane and low cost characteristics.
- Adopt new - style aluminum alloy supporting roller.
- The laminating - supporting roller and stripping roller are equipped with forelocks associating with standard 3 - inch paper rolls.
- It saves manpower and is easy to operate. As a result of the novel structure it has been a good market since its appearance.
- Since it was produced; it has been popular at the roller for supporting film, guiding roller and roller for collecting liner paper.
- It is operated conveniently and high efficiently - It realizes continuous laminating and longer picture laminating. Realize automatically stripping film and collecting liner paper through the rotary force of the upper and lower roller.

Product Details

Machine Weight: 204kg

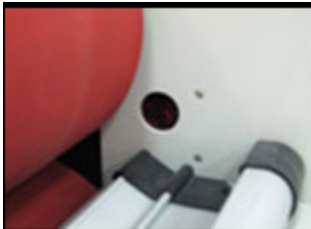
Machine Model:

FMJ-1600-II plus

Gross Weight: 264kg

**Good color reducibility
and light transmittance,
free of bubbles and
snowflake point! It saves
manpower and is easy
to operate.**





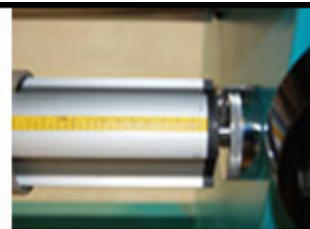
Hotocell safety switch



The baffle - board of photocell safety switch



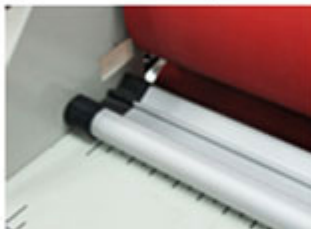
Control panel



New type aluminium alloy supporting roller



Bearing of supporting film roller



Panel for covering the picture



Tension knob



Up and down handle



Power socket, foot pedal switch



FMJ-1600- II plus stand



The reverse side



Package

Machine Structure



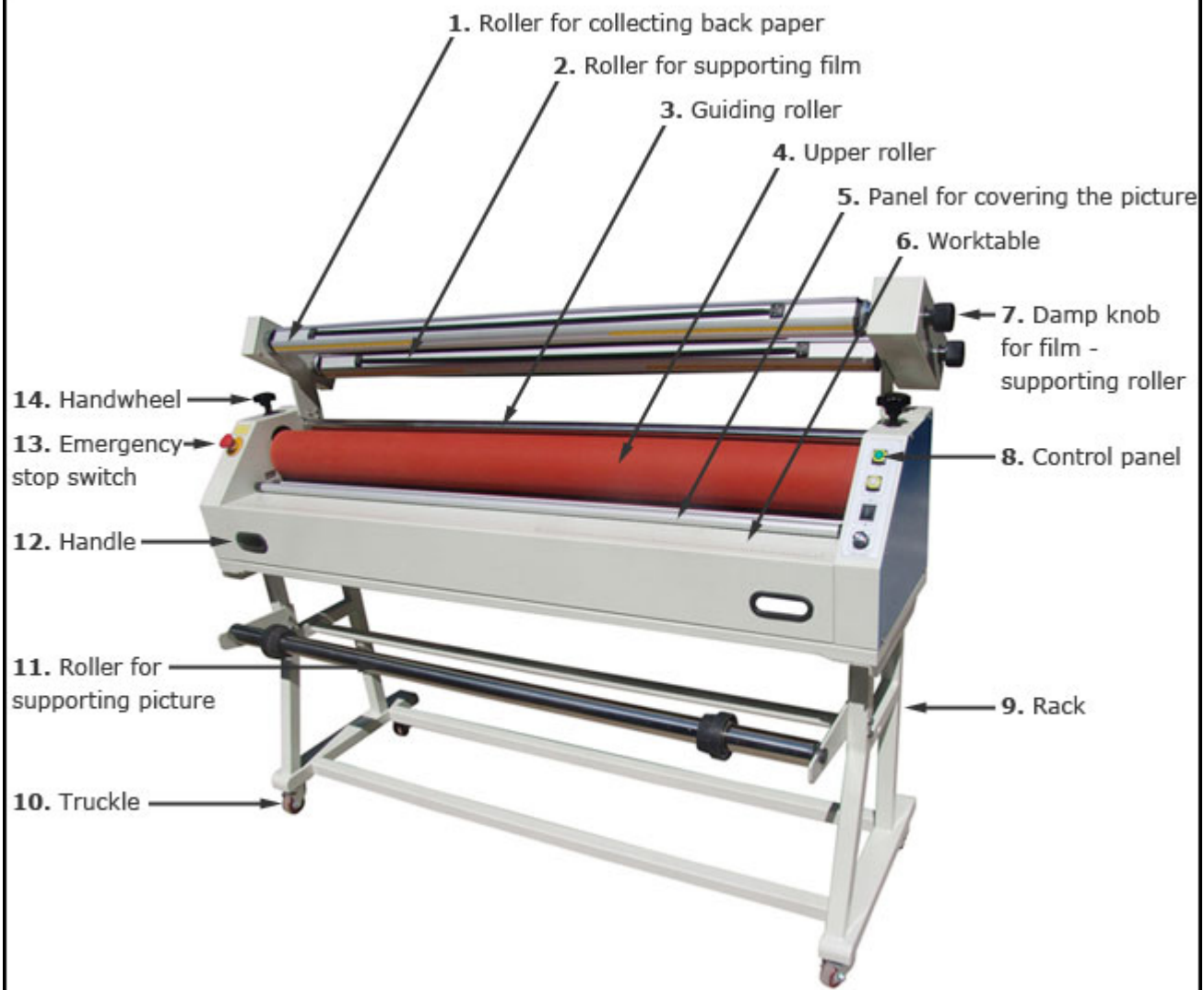
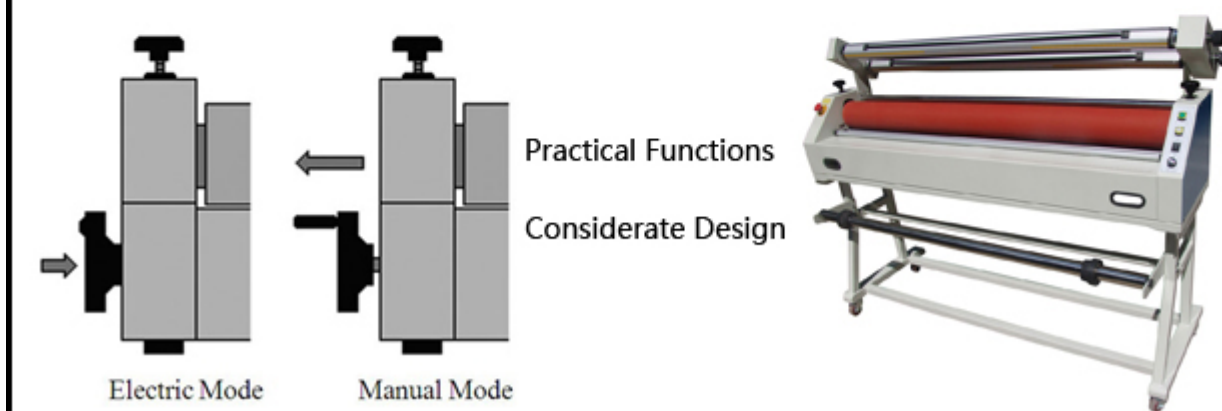




Exhibit 5

Aluminium rollers for film-supporting, picture-supporting
picture-collecting , stripping

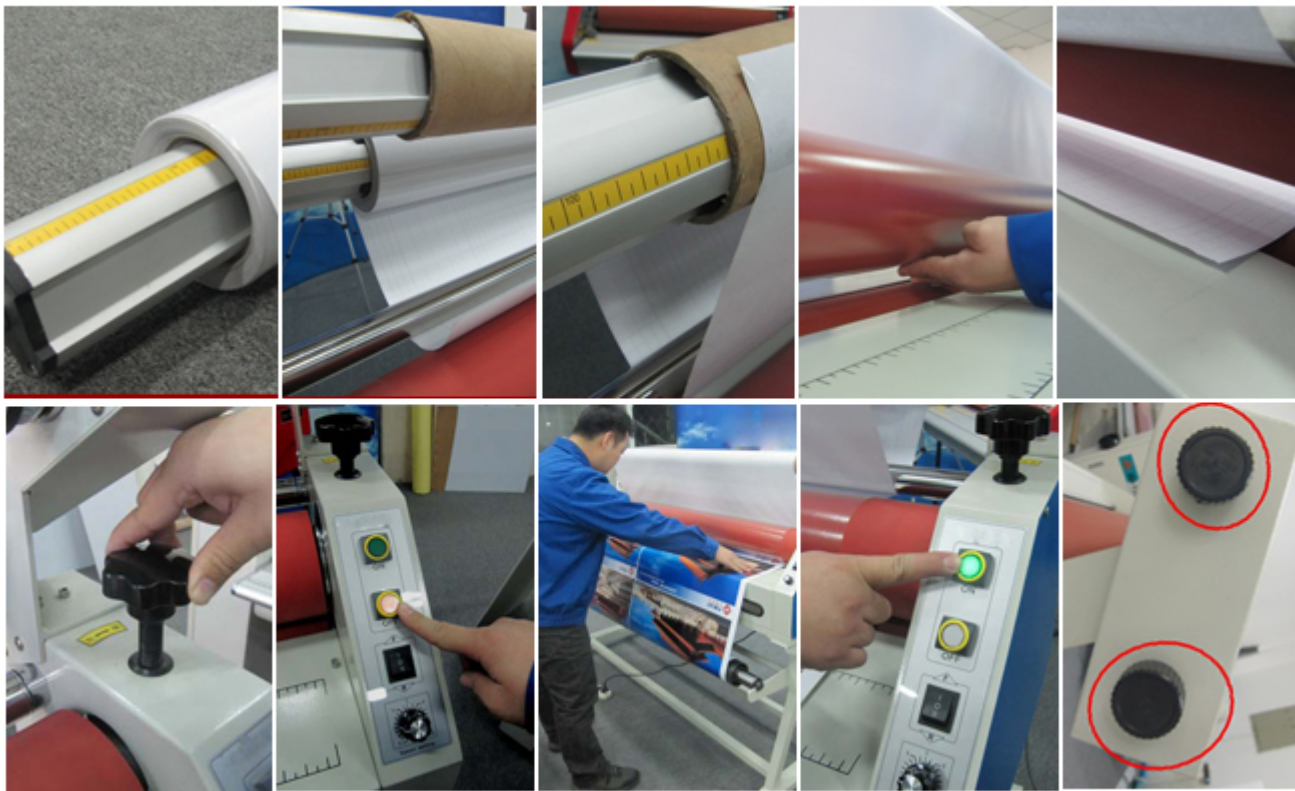
1. end cap 2. aluminium material 3. adhesive tape 4. fixed block



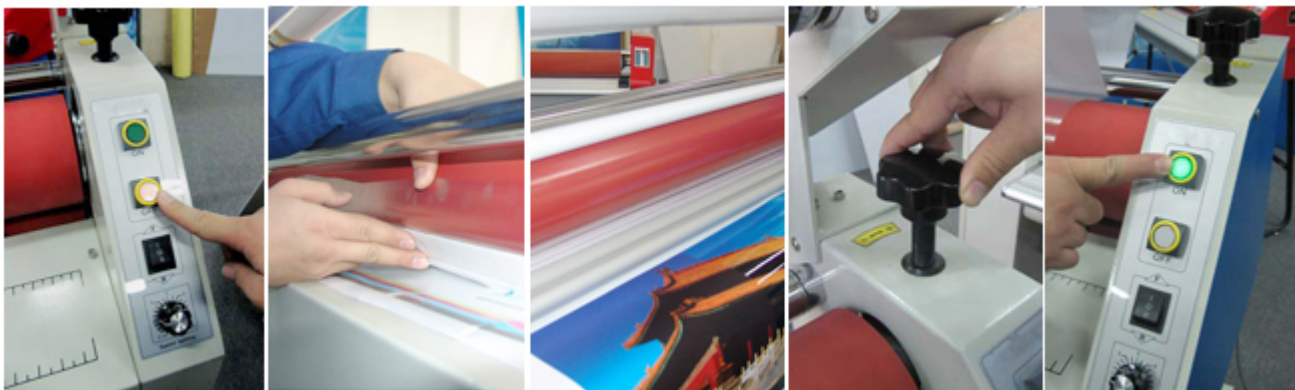
usage



How to laminate the long pictures?



How to laminate the short pictures?



How to mount the board?



Comparison:



Appearance: Take reasonable money to buy the suitable machines

Our Machine: Appearance design of FMJ-1600-II plus semi - auto cold laminating machine has novel, simple and reasonable structure, humane and low cost characteristics.

The Other Machine: The top right side machine's appearance design is too thin, and it is easy to damage, and it has many questions if you buy.

Textile of rollers:

Our Machine: Adopt high quality diameter 128 mm (5") acrylonitrile butadiene rubber rollers, which can control the quality laminating very well. At the between upper and lower roller the picture laminated is the straight-line movement of internal forces. It saves manpower and is easy to operate.

The Other Machine: The common cold laminator machine adopts normal rubber roller, and up and down roller's thickness is not the same that will affect the laminating effect and machine's using life.



Textile of rollers: for supporting film, for supporting picture, for collecting liner paper

Adopts new - style aluminum alloy supporting roller, which is easy to assemble / disassemble and can be used in exchange. The collecting rollers are dynamical rollers and the supporting rollers are without dynamic. All of the rollers are equipped with damp devices and are eligible for speed adjustment.

Why buy this semi - auto cold laminator?

Laminating is a low cost way to protect and preserve everything from ID cards to restaurant menus. But did you know lamination does more than just protect? And that it protects in ways you may not have considered.

Lamination Preserves & Protects:

Here are a few ways lamination protects your materials, with an example of each:

Protects from spills: Sales presentation materials

Protects from rain: Little League team roster

Protects from grease and chemicals: Maintenance check list

Protects from smudges & fingerprints: menus

Protects from abrasion: Instructional materials

Protects from the sun: outdoor directional signs

Protects from creases and wrinkles: sales promotion material

Lamination provides low - cost long - term protection without the need for climate control or other special protective measures.

Lamination Improves Appearance:

Lamination improves the appearance of your materials in a variety of ways. For example, lamination:

Deeper and brightens colors; Enhances contrast; Dirt, grease and smudges can be cleaned off; Gloss, matte or satin finishes are available; Lamination gives your materials a finished, professional look of quality. Materials that are laminated just look better!

Lamination Can Improve Sales / Save Money:

By giving your materials a higher quality, professional look, lamination can improve your business image and help bring in more sales leads. Lamination can also save you money in a variety of ways, such as:

Laminated materials can be reused over and over

Expensive graphics are protected

Lamination stiffens signs and posters (additional backing is not needed)

Employees have proper identification helping to save time and reduce accidents.

You can make low-cost signs that resist weather

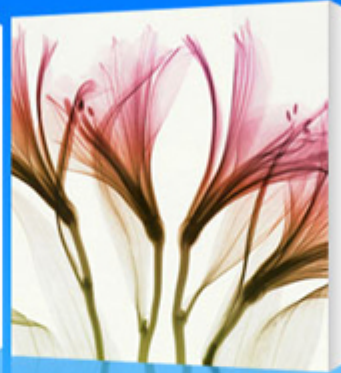
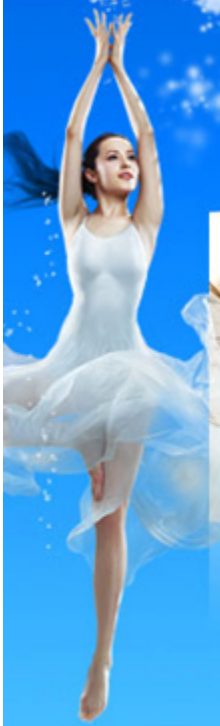
Lamination provides a durable way to protect and enhance almost any type of printed material. It improves the quality of materials by enhancing color and contrast, and providing a glossy "wet" look.

Application

The cold laminator is used for after printing. Available for photographic, Ad. Shop and copy shop to do lamination work, adding a protective layer on books cover, photographic, color pages, documents, charts, drawings, indoor advertising products, etc.

Brighten Your Graphics

Decorate Your Life!





Specifications

Model	FMJ-1600-II plus
Maximum Laminating Width	1600mm (63")
Maximum Laminating Thickness	25mm (1")
Laminating Speed	0 - 5m (197") / min
Forward / Reverse	Yes
Foot Pedal	Yes
Roller's Diameter	128mm (5")
Auto rewind liner pickup	Yes
After Laminating Pickup	No
Emergency Stops	Yes
Safety Photocell	Yes
Media Core Size	3"
Power Supply	AC 110V - 240V, 50Hz or 60Hz

Tags

[63" Semi-auto Master Mounting Wide Format Cold Laminator](#)

QA

Q

Please can you send Machine Specification details; also FOB price and sea freight cost and when you could despatch?

A

please check the following link in our website about the laminators and choose the one you need . http://www.sign-in-china.com/catalogs/56/Cold_Hot_laminators.html. Prices are shown on our web.

Reply by [sign-in-china](#)

Q

we need machines with a clutch and a brake. Do your machines have this facility?

A

As for the brake and clutch function , our models all have this function.

Reply by [sign-in-china](#)

Q

Does this machine FMJ-1600II Plus come with a 'safety eye sensor' at the roller front that is interconnected to the power circuit, that will detect fingers in the roller vicinity and shut the machine down?

A

Yes , FMJ-1600II Plus come with safety eye sensor.

Reply by [sign-in-china](#)

Q

Is this available machine FMJ-1600II Plus to be shipped, will you keep spare parts for say 5 years?

A	<p>Usually, we keep stock of goods, but please contact our overseas sales representative to confirm. We can assure offer spare parts over 5 years.</p> <p>Reply by sign-in-china</p>
Q	<p>Does this machine FMJ-1600II Plus have a wheel handle to turn the front roller for getting the product in by 25mm; and if not could one be fitted; and if so, at what cost?</p>
A	<p>Yes, it has.</p> <p>Reply by sign-in-china</p>
Q	<p>Please can you advise the speed of the machine FMJ1600II Plus – slowest and fastest?</p>
A	<p>Speed is 0-5m/minute.</p> <p>Reply by sign-in-china</p>
Q	<p>we need low temperature heat and that the FMJ-1600-II plus is what we think?</p>
A	<p>FMJ-1600-II Plus is cold laminator without the low temperature function, FMJ-1600RFX and FMJ1600RFZX can meet your request.</p> <p>Reply by sign-in-china</p>
Q	<p>Our Electricity Power single phase 240V/60h, is it ok?</p>
A	<p>No problem. We always make the product according to client's requirement.</p> <p>Reply by sign-in-china</p>
Q	<p>If I buy this machine is there any video guide how to install the machine. If we get any problem in installation or working what is the solution.</p>
A	<p>For the operation of the machine,pls check http://v.youku.com/v_show/id_XNDM2NDI1NTYw.html There is the user manual with the machine,pls don't worry about this,it is easy to install.</p> <p>Reply by sign-in-china</p>



