



Sign-in-China.com
One Stop Solution For AD signs

47" x 35" (1200mm x 900mm) Laser Engraver and Cutter

Item Code: LEM-LD-1200H



FOB Price: **\$4,987/set**

Mini Order: 1 set

Shipping Weight: ★★★★★

Average Rating: 1989.0lb (904.08kg)

[Inquire Now](#)

Overview

Main Function: Scan/engrave/cut

Application:

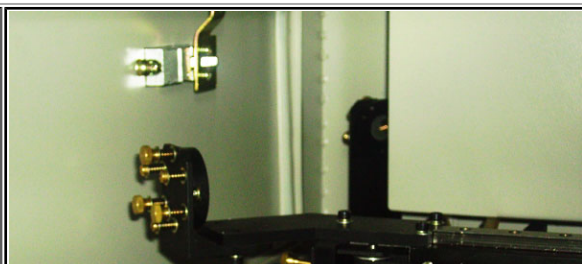
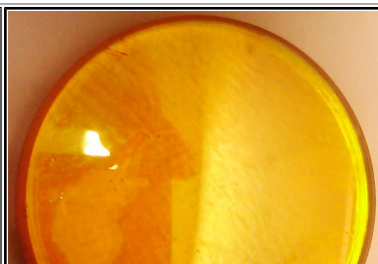
This laser engraving and [cutting machine](#) is equipped with a standard knife shape aluminum rib working table and a standby honeycomb working table so that to be used for more industry applications such as music instrument, art gift, advertising decoration, toy, electronic industry, cutting of template, paper product, costume products and so on.

Materials that can be engraved:

This laser engraving and cutting machine can engrave on all kinds of nonmetal materials and parts of coated metals, such as bamboo, putamina of coconut, paper, plexiglass, [acrylic](#), marble, jade, crystal. It also features a cutting function. With the rotating unit, it can engrave on a cylinder objects, such as cup, pencil vase and so on. It breaks through the limitation of the planar engraving and augments the range of the working.

Product Highlights:

- . Luxurious outlook design, unique door for the limitless engraved materials through. It can engrave on nonmetal materials with high speed and high precision.
- . Professional DSP controlling system, compatible with AutoCAD, CorelDraw, Photoshop, and other kinds of graph disposal software.
- . Adopt step subdivision driver, numeral timing, simulation quantum control laser power, little error, high repeat precision, engrave 3mm little character perfectly.
- . This laser engraving and cutting machine is equipped with manual up-down lift working platform for your option, its max. Lifting height can reach to 300mm (11.8"), which greatly broaden the scope of processing objects.
- . Professional laser electrical power and laser tube with high quality makes the laser engravings run stably.
- . LED control panel makes the laser engraving and cutting machine easy operation.
- . Imported high precision beeline slide-ways, imported professional optical system, improve the engraving quality.



LED control panel	Focus lens	beeline slide-ways
-------------------	------------	--------------------

Spare Parts:

Glass laser tube 80W (1.4m): +\$458

Reflective mirror(F25): +\$26

Focus lens(F20) : +\$98

With the following optional devices, more functions can be added to the [laser engraver machine](#)(prices are not included in the laser engraver):



Co2 Glass Laser Tube 100W(1.6m): +\$680



Rotary Fixture: Used for engraving on the surface of column of ?80-100mm(3.15"-3.94"). +\$688



Water Chiller: It can extend the using life of laser source, and ensure the engraving effect better. +\$331

Guarantee & Aftersales Service:

Laser tube 1000-2000 hours' working time.

Comprehensive guarantee for one year except the spare parts.

24-hour technical support by email or calling.

User-friendly English manual for machine using and maintaining.

Samples:



Engraving on leather



fabric laser cutting



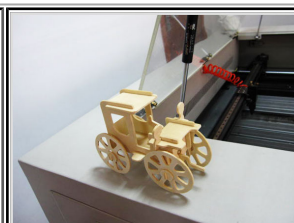
Leather cutting



Marble engraving



Stone engraving



	Using laser cutter for Acrylic cutting	Wood cutting _ making building model	wood cutting	
--	--	--------------------------------------	--------------	--

Details

Engraving Precision	Chinese characters: Chinese: 0.14" x 0.14" (3.5 x
Max. Engraving Speed	3150" (80000mm)/min (speed adjustable)
Effective Engraving Area	47.3" x 35.4" (1200 x 900mm)
Laser Power	CO2 glass laser tube 80W
Support Image Format	AI, BMP, PLT, DXF and DST

Specifications

Model	LEM-LD-1200H
Max. Engraving Area	47.3" x 35.4" (1200 x 900mm)
Laser Power	CO2 glass laser tube 80W
Max. Engraving Speed	80000mm/min(3150")(speed adjustable)
Max. Cutting Speed	1181" (30000mm)/s
Max. Cutting Thickness	0.79" (20mm) (acrylic)
Min. Engraving Characters Size	Chinese characters: 0.14" x 0.14" (3.5 x 3.5mm), English letters: 0.059" x 0.059" (1.5 x 1.5mm)
Positioning Precision	0.0009" (0.025mm)
Repeat Precision	0.0003" (0.01mm)
Resolution	?1000dpi (1000dpi is the best)
Power of the Water Pump, Air Blower, Air Pump	(100+250+105) W
Whole Power	500-2000W
Cooling Way	Water cooling and protection system
Support Image Format	AI, BMP, PLT, DXF and DST (embroidery software)
Engraving Software	Specialized engraving and cutting software(Wentai engraving software)
Power Support	AC 220V/50Hz

Interface	LPT (support connect with computer directly)
Working Temperature	0-45 degree
Standard Equipment	Exhaust fan, exhaust pipe, water pump, air pump, water box, knife shape aluminum rib working table, and a standby honeycomb working table.
Spare Parts	Reflective mirror, lens, and laser tube.
Optional Device	Water Chiller, rotating clamp, SP series control handle (support USB interface), co2 laser tube 100W made in china.
Machine Dimension	65.0" x 46.5" x 37.8" (1650 x 1180 x 960mm)
Machine Weight	661.4Lb (300kg)
Package	Fumigation free package
Packing Size	84.6" x 57.1" x 57.1" (2150 x 1450 x 1450mm)
Gross Weight	1036.2Lb (470kg)

Tags

[47" x 35" Laser Engraver and Cutter Machine](#) [Laser Engraving Machine](#) [Laser Cutting Machine](#)

QA

Q	About this machine what kind of material I can cut and how is the maximum thickness , it is good for wood working ?
A	<p>You can cut most of the non metal materials, such as the wood, acrylic .etc. this machine matches 80W glass tube, it can cut acrylic with Max thickness of 20mm and normal wood of 15mm thick.</p> <p>Reply by sign-in-china</p>
Q	Can I upgrade the 80W laser tube to 500watt for metal cutting?
A	<p>Sorry, it can not, if you want to cut metal, our company has the YAG laser cutting machine, please visit our website to fine them.</p> <p>Reply by sign-in-china</p>
Q	Will I need to buy the spare part together the equipment?
A	<p>We advise you to buy the spare part together the equipment,all our clients order one set spare part together the equipment</p> <p>Reply by sign-in-china</p>
Q	Does the water chiller included with the equipment?

A	<p>Sorry, the water chiller is the optional device</p> <p>Reply by sign-in-china</p>
Q	<p>Do you have some support in USA?</p>
A	<p>We haven't support in USA at the moment, our company has our own technical support team in Beijing, we can provide you warm after sales service and 24 hours technical supports online or by phone.</p> <p>Reply by sign-in-china</p>
Q	<p>Is the software included?</p>
A	<p>Yes, the machine comes to you with software ware and other full sets of accessories.</p> <p>Reply by sign-in-china</p>
Q	<p>If I stick a picture aver the acrylic and I want to cut the acrylic and the picture at the same time exactly. How does this equipment work?</p>
A	<p>You can choose the red light positioning system to meet your demands.</p> <p>Reply by sign-in-china</p>
Q	<p>What are the advantages of use a water chiller?</p>
A	<p>The water chiller can cool down the laser tube well, ensure a longer using life of the laser tube and can make sure a better engraving and cutting precision.</p> <p>Reply by sign-in-china</p>
Q	<p>if your laser is easy to use with graphical programs?</p>
A	<p>Yes</p> <p>Reply by sign-in-china</p>
Q	<p>if maintenance will be no problem as your technical support is not really nextdoor!</p>

A

Don't worry, we have professional technician who can give you 24-hour technical support by email or calling.

Reply by [sign-in-china](mailto:info@sign-in-china.com)



Copyright © 1999-2012 by Beijing ChinaSigns Information Company Limited All Rights Reserved.

Email: info@sign-in-china.com Tel: +86 132 6410 3286 www.sign-in-china.com