

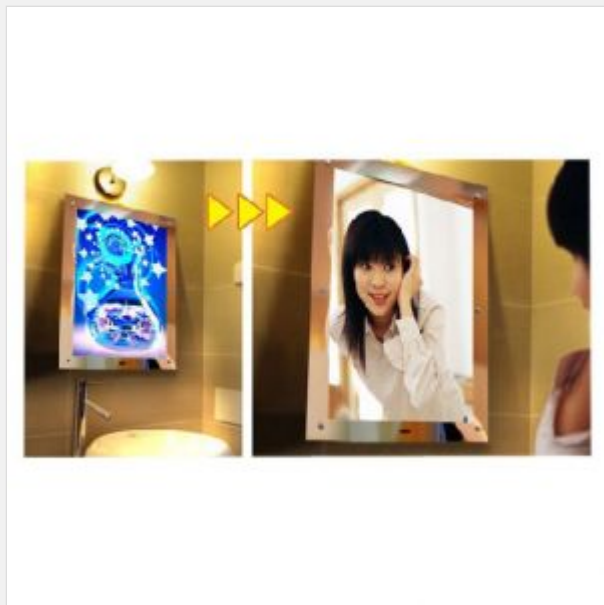


Sign-in-China

Online Wholesale for AD & Signage Products

[????????? ?????????? ?????? Magic ???????? ?2](#)

Item Code: MLB-CY-A2



FOB Price: ????.9 468/??.

Mini Order: 1 ??.

Shipping Weight: ★★★★★

Average Rating: 20.2lb (9.16kg)

[Inquire Now](#)

Overview



- SMD LED lighting for long life-span.
- Crystal magic mirror, it's clear and attractive.
- Adopting superior lighting panel, imported acrylic mirror or mineral coating glass mirror.
- 70%-80% energy saving than the traditional light box
- Control on/off by infrared ray sensor, when people approach, it displays a mirror, when people away, it displays a picture.
- Configuration: Mirror board + sensor +optical light panel+ transparent back board + diffuser coat reflective coat wires, mirror is coating glass, clear.

Details

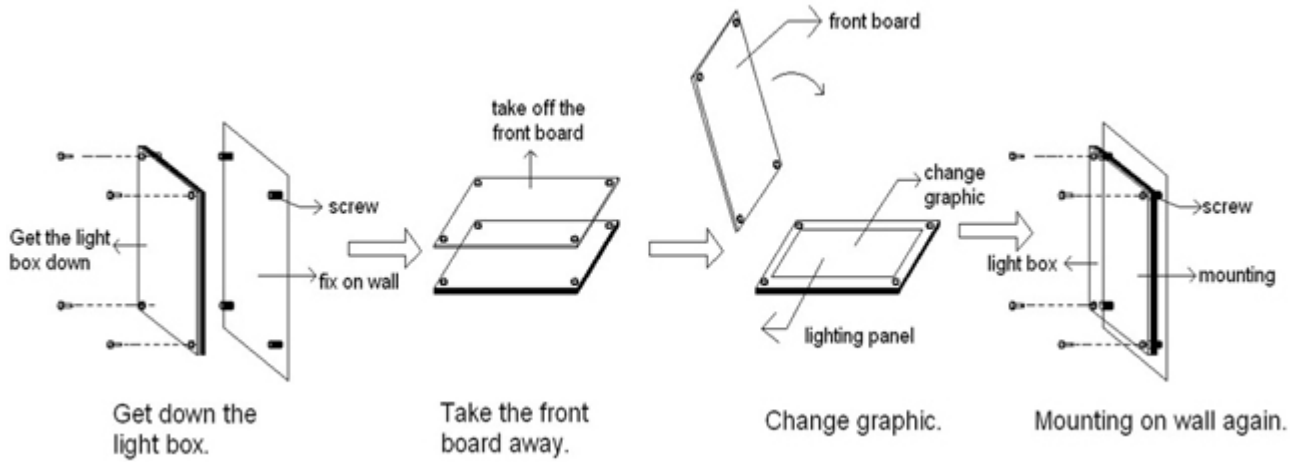
Description:

Magic mirror light box with acrylic frame changes between mirror and light box. Infrared ray sensor plays an important role during the whole operation because it's respondent. It's a mirror when you are approaching, and a picture when you are 47.2"-78.7" (1.2-2m) far away. It is super slim with unique design. It is widely used in shopping mall, hotel, restaurant, house, school, etc. Also, it can be made with aluminum frame if you like.

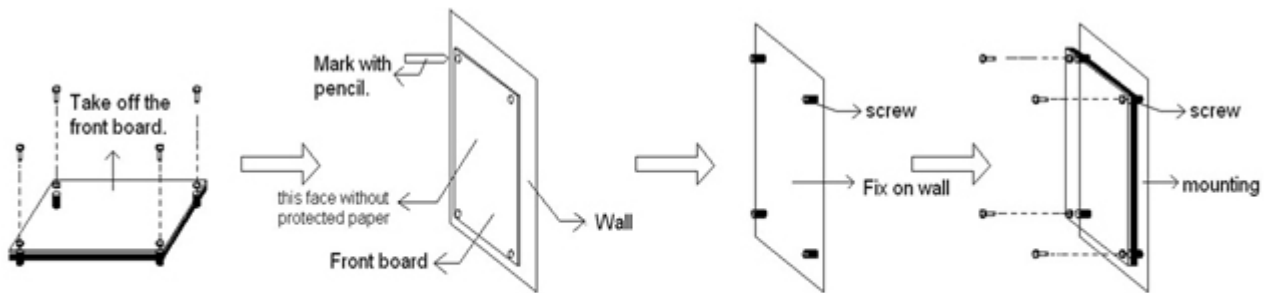


Installation

How to Change Graphic?



How to Mount on the Wall?



Comparison



VS



Item	Crystal Magic Mirror Light Box	Crystal Light Box
Feature	Fashion	Normal
Function	Mirror and light box display	Light box display
Application	More places display	Many places
Graphic Change	Easy	Easy

Application

It's widely used in different places, such as hotel, shopping mall, airport, house, school, etc.



Light Box  **Mirror**



Workshop

