



3000mW Laser Engraving Machine DIY Print Carving with Wireless APP Control

Item Code: LCM-DK-8-KZ-01



FOB Price: **???.80 342/????????**

Mini Order: 1 ????????

Shipping Weight: ★★★★★

Average Rating: 5.8lb (2.64kg)

[Inquire Now](#)

Overview

3000mW Laser Engraving Machine DIY Print Carving with Wireless APP Control

This mini laser-engraving machine with high precision and high stability is an amazing gift for DIY fans. It supports both wireless BT and USB cable connection, much practical than normal engraving machine.

Activation:

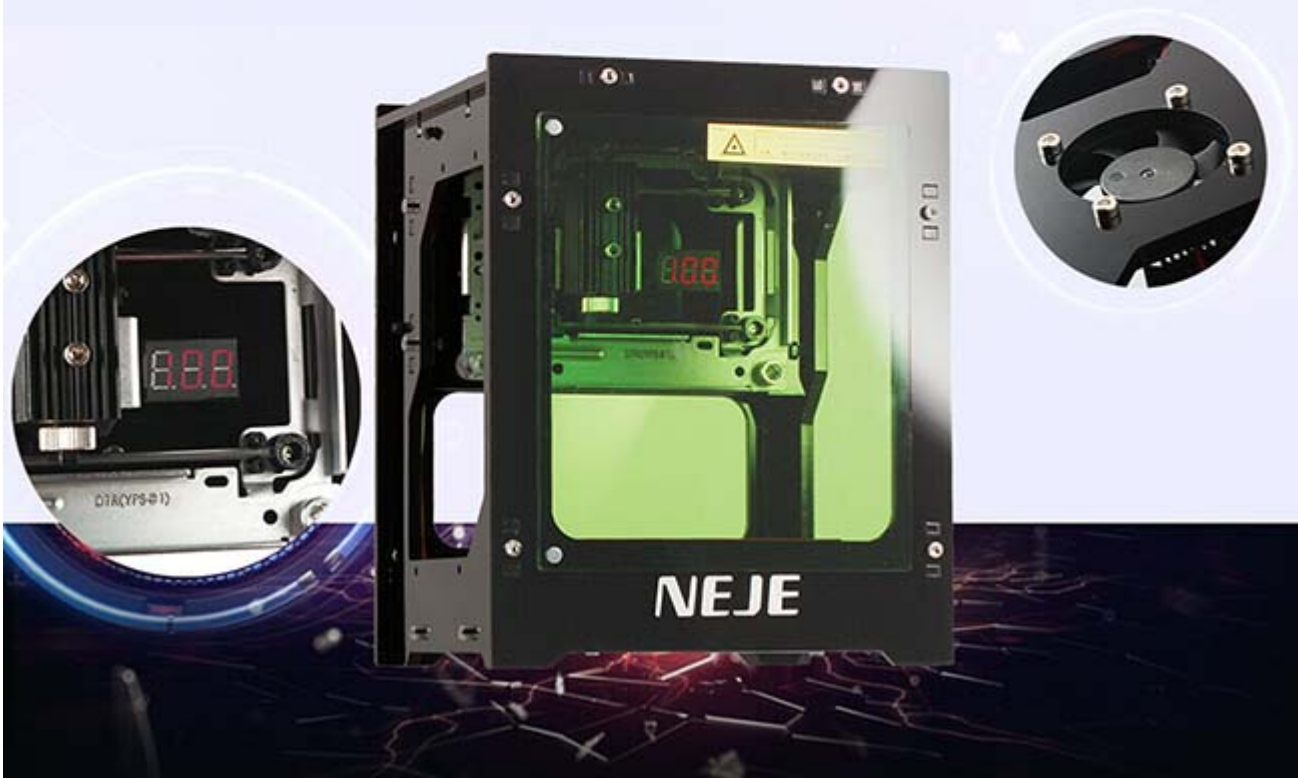
In order to ensure that the machine is powered off during transportation, the factory will sleep the machine in advance. The first time you use it, you need to connect the USB cable to activate the machine.

Built in the Digital Tube

Display voltage and current

High speed, high precision and high stability, easy to replace the laser module

HIGH PRECISION



Feature:

- 1.Support our professional English design software.
- 2.Engraving is 10 times faster.
- 3.Strong and cool design, high precision and stability, with 108 screws and alloy structure that make it strong.
- 4.Unique frame and weak light automatic positioning, Frame positioning makes the image positioning easier, Weak light even would not be difficult to engrave in toothpicks, Make engraving picture no excess residue and perfect, also more safe to prevent fire.
- 5.490 x 490 high Resolution Print, Soft material can print out the 3D and the gradient effect.
- 6.Lone time use, NEJE developed the professional power IC and radiator, Carving time will last much longer than other laser and more stable.
- 7.Truly 3000mW Blue and purple laser head, higher speed, support more types of materials.

Detail:

ACTIVATION

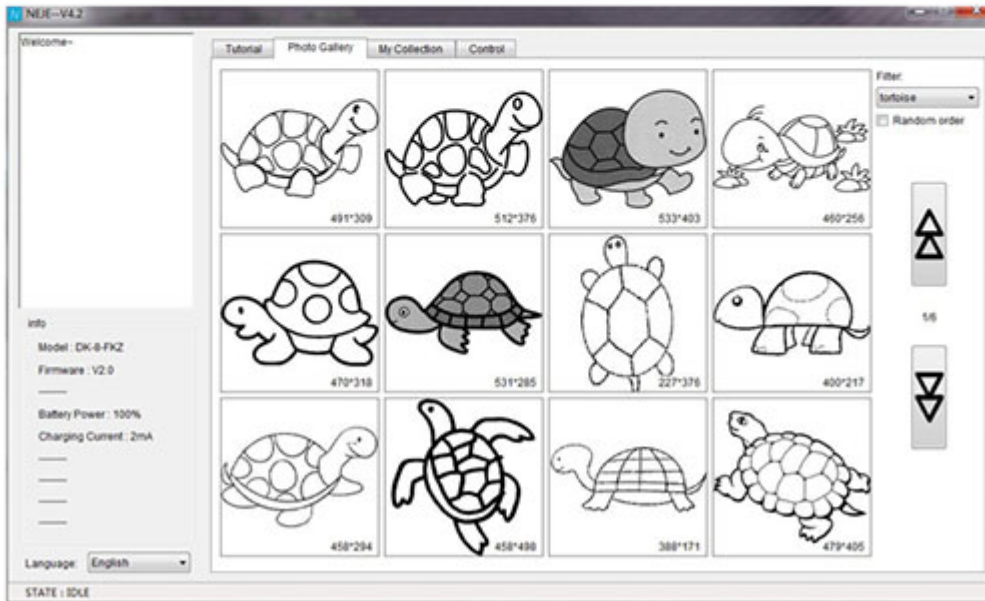
In order to ensure that the machine is powered off during transportation,
the factory will sleep the machine in advance.

The first time use it, please connect the usb cable to activate the machine.



NEJE Cloud Service

- Thousands of engraved pictures, and constantly updated
- Support for software updates
- Support tutorial updates



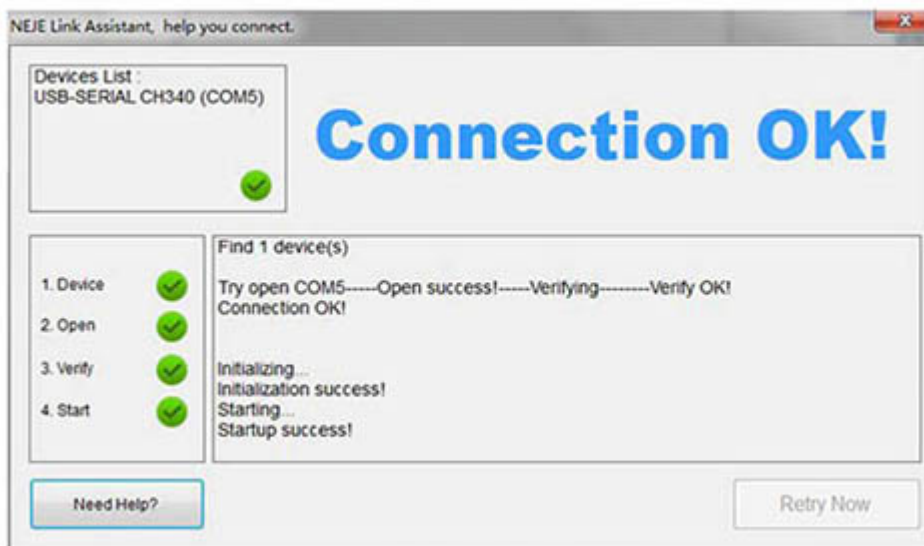
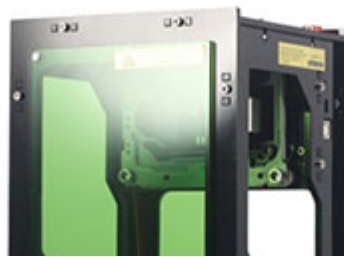
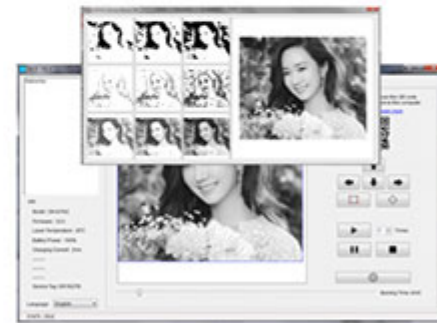
	405nm 1000mw	405nm 1500mw	405nm 2000mw	445nm 3000mw
color	purple	purple	purple	blue
image	good	good	good	poor
depth	general	good	good+	good
precision	good	good	good	general
speed	general	mid fast	fast	fast
application	text, logo, image	text, logo, image	text, logo, image	text, logo

NEJE Scanner

Scan the computer software QR code with the neje scanner app for real-time fast data transfer. Neje scanner can take your favorite material and album picture, computer software will provide 9 kinds of algorithm effects immediately after receiving the picture, there is always a style that suits your needs.

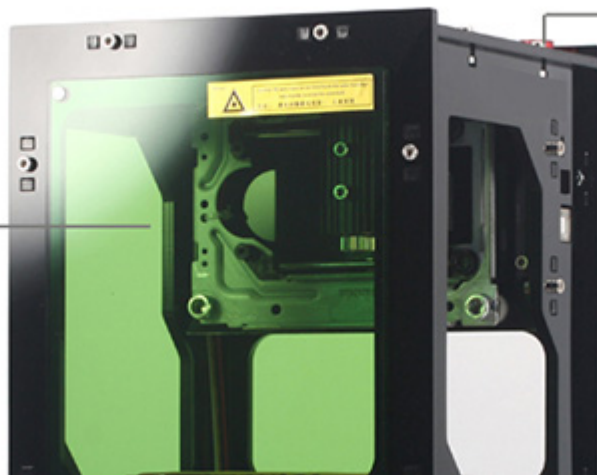


(android)

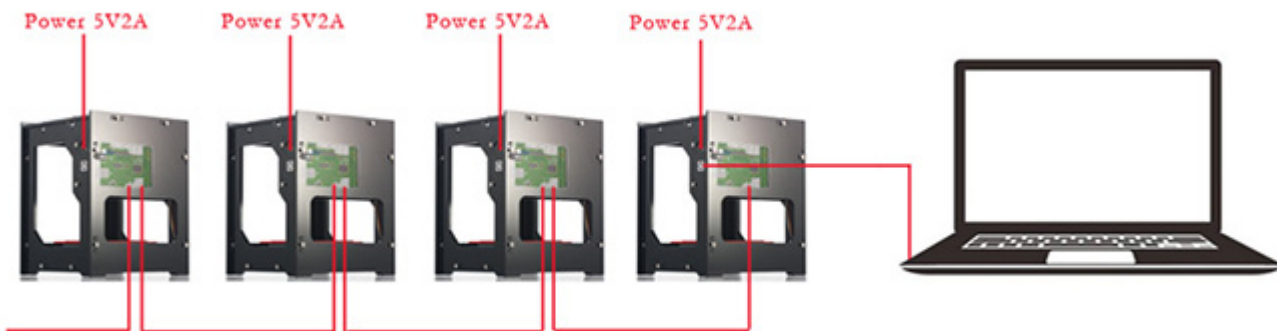


Safety

Protective panel



Emergency stop button



4 Pin Long life of laser tube



- Anti-static protection design
- Surge protection design
- Aging production
- 6 month warranty
- TTL control
- Temperature-responsive

Compatible

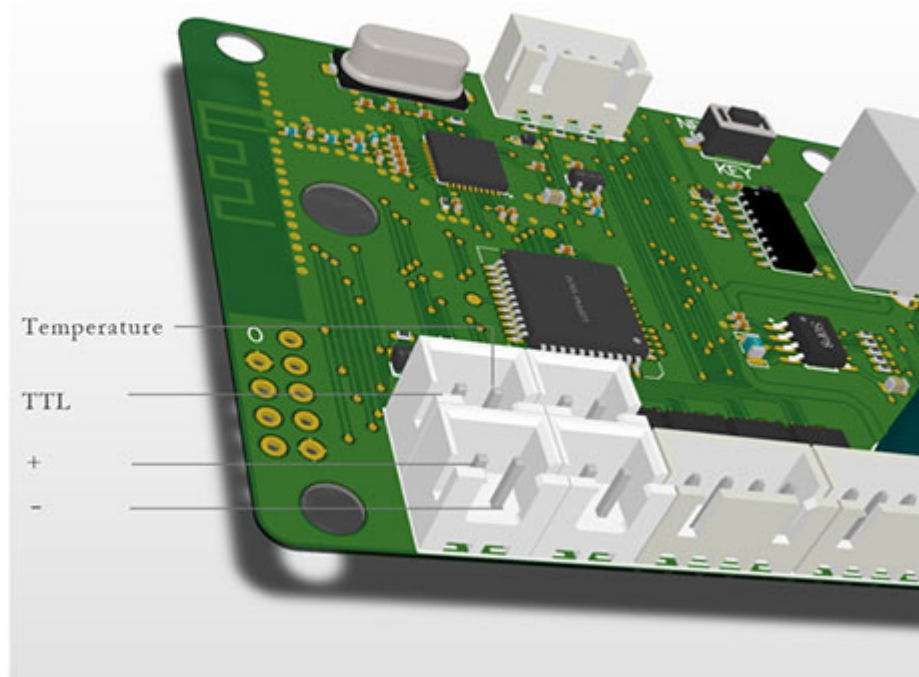
Support:

1000mw 2pin,

1500mw 2pin,

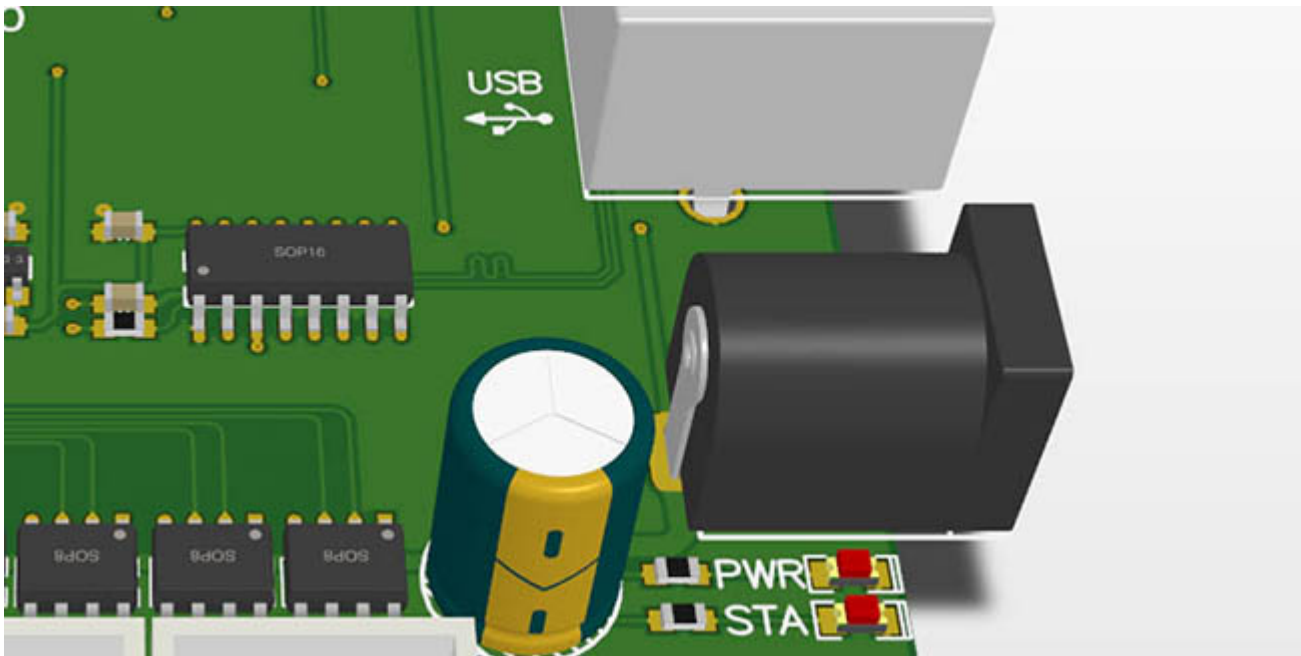
2000mw 2pin,

3000mw 4pin



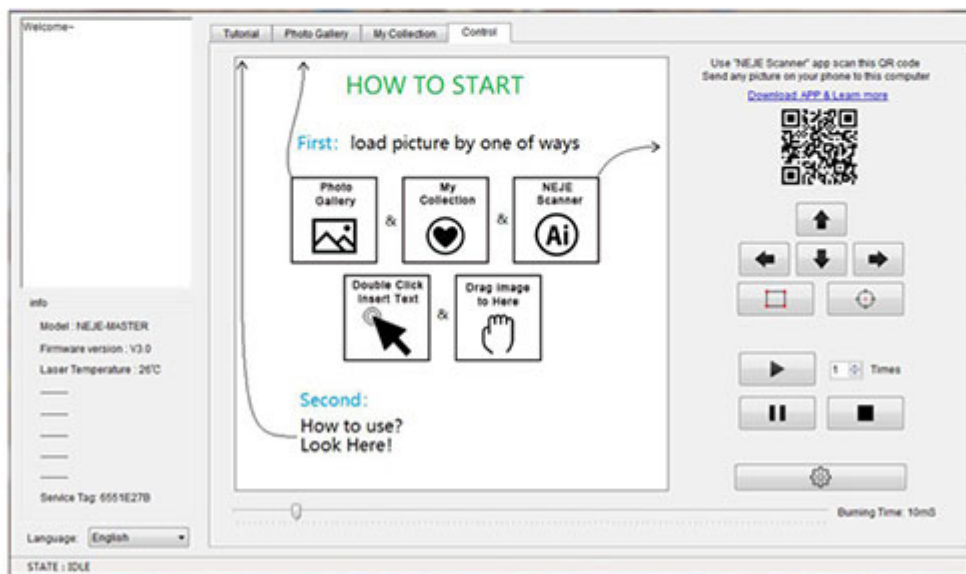
Why high precision?

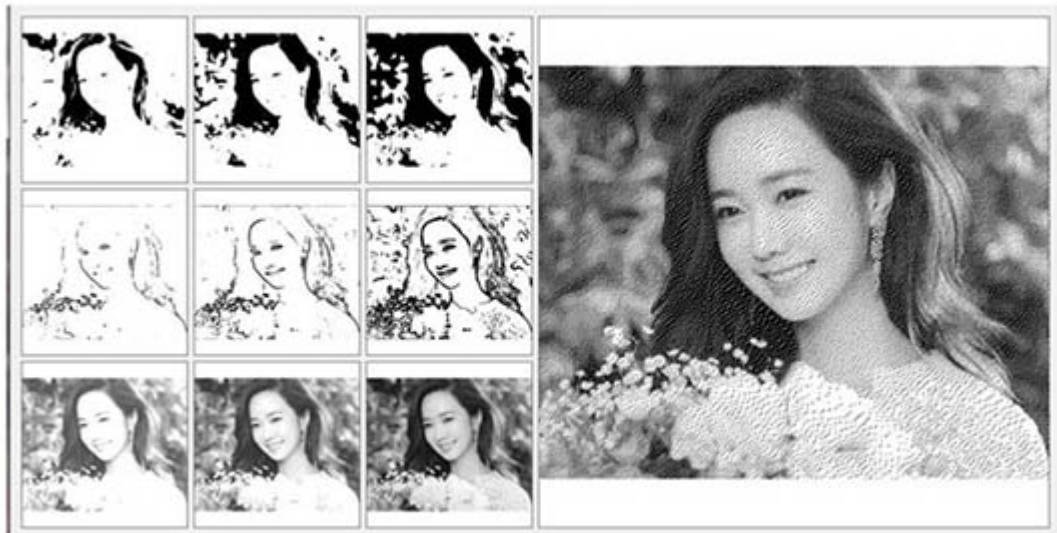
- Full frame structure ensures the machine reliable and suppresses unnecessary vibration
- All-metal high-progress motor drive, non-plastic parts, ensuring mechanical precision
- Excellent motor drive algorithm make the laser working stable and efficient
- 10x9x5cm engraving space, It can engraving any mobile phone, mobile power, phone case, wallet, wooden block, wooden stick etc.



Windows Software

- Auto connect
- Support bmp, jpg, png and other image formats
- 5 ways to get images, (Photo gallery, my collection, neje scanner, double click, drag in)
- 9 image algorithms
- Pixel level restore image





445nm Laser Head Test (3000mw 445nm)

Low power state is easy to lose details



Good at:

- Icon engraving
- Deep carving

Not good at:

- image engraving
- text engraving

WHAT KIND OF MATERIAL TO ENGRAVE!

Applicable material: Wood / Plastic (fire-proof material not included) / Acrylic/Bamboo / Rubber / Leather/Paper and other Flammable Materials / Cannot carve metal / glass.

Supporting OS: Android Phone – iOS iPhone/iPad –Win XP/7/8/10 –Mac OS



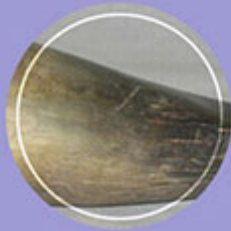
Wood



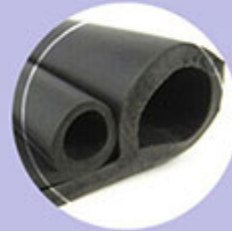
Bamboo



Acrylic



Bone



Make laser engraving work by yourself



Email: info@sign-in-china.com Tel: +86 132 6410 3286 www.sign-in-china.com