



# Sign-in-China

Online Wholesale for AD & Signage Products

???????????????? 6090 ?????????? ?????????? ??????? ? ???  
(????????)

Item Code: CNCR-RS6090



FOB Price: ???,421 711/????????

Mini Order: 1 ????????

Shipping Weight: ★★★★★

Average Rating: 242.0lb (110kg)

[Inquire Now](#)

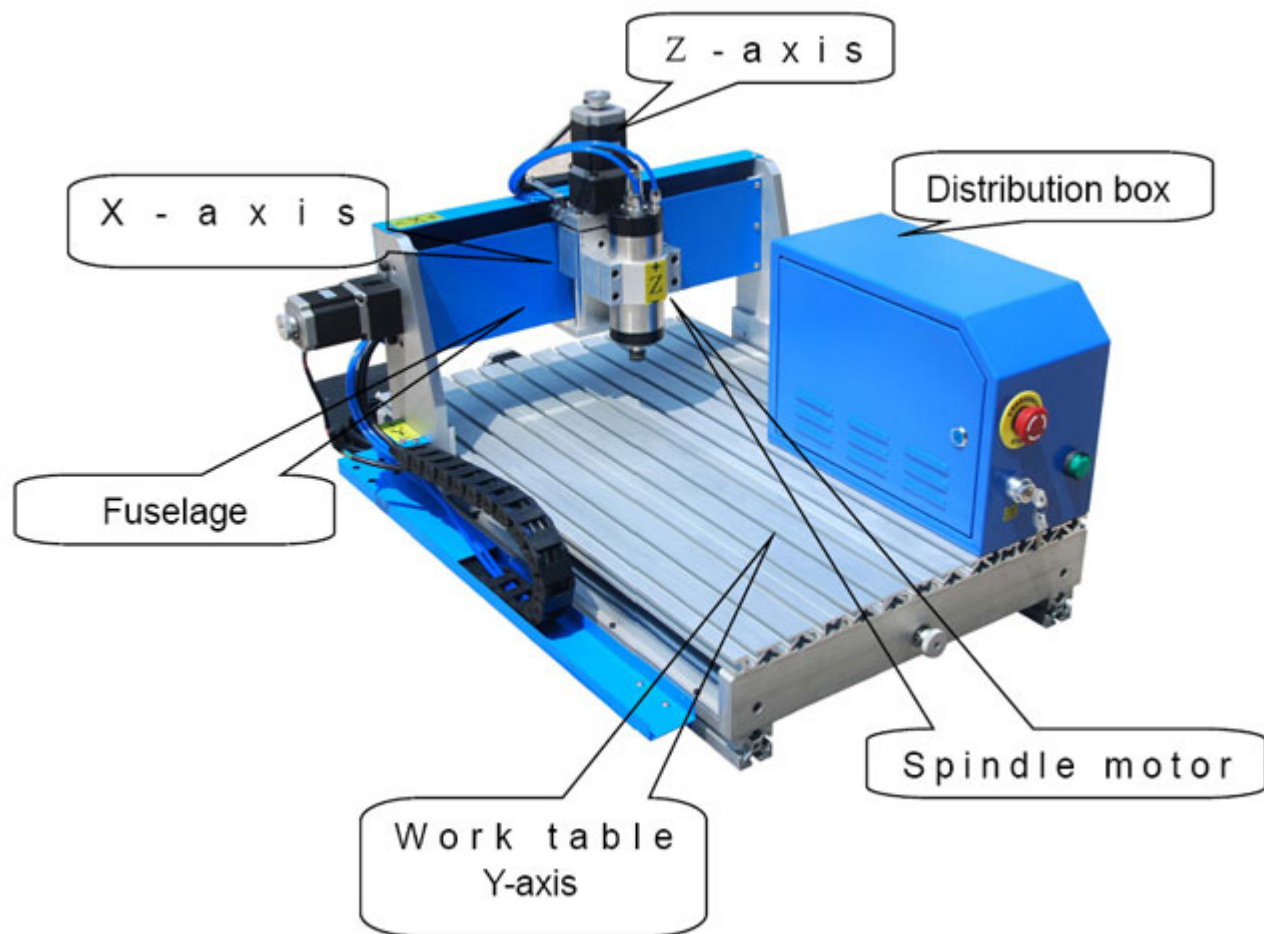
## Overview

### New Professional 6090 Desktop CNC Router Drilling Milling Machine

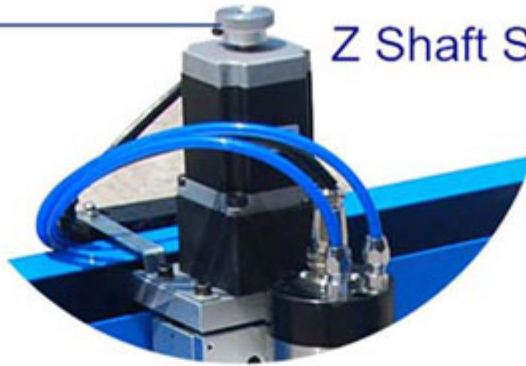
## Feature

- Special spindle design, start a new style of kiwi series.
- Small and simple, this is the main features. But it can provide you an amazing result with its strong structure.
- Even small, we still use 800w spindle to give it enough power. Ball screw gives it good resolution and less noise.
- Separate motor and driver for each axis, making the machine works more reliable.
- All the machines are equipped with DSP handle and USB connection, which will bring great convenience by reading USB memory directly (Ncstudio and Mach 3 are also good choices).
- The machine can achieve the performance of good resolution and less noise with ball screw.
- CE certificate.
- Three -axis all adopt the imported ball screw with original package, working steadily, ensures high precision.
- The adoption of high subdivision drive ensures high speed and high precision.
- Water cooling variable frequency and brushless high power spindle, good speed adjustable performance, wide range, high running efficiency, smaller noise, powerful cutting capacity, can work for a long time with mass production, user-friendly design can be disassembled, and easy to installation and transportation.

## Details



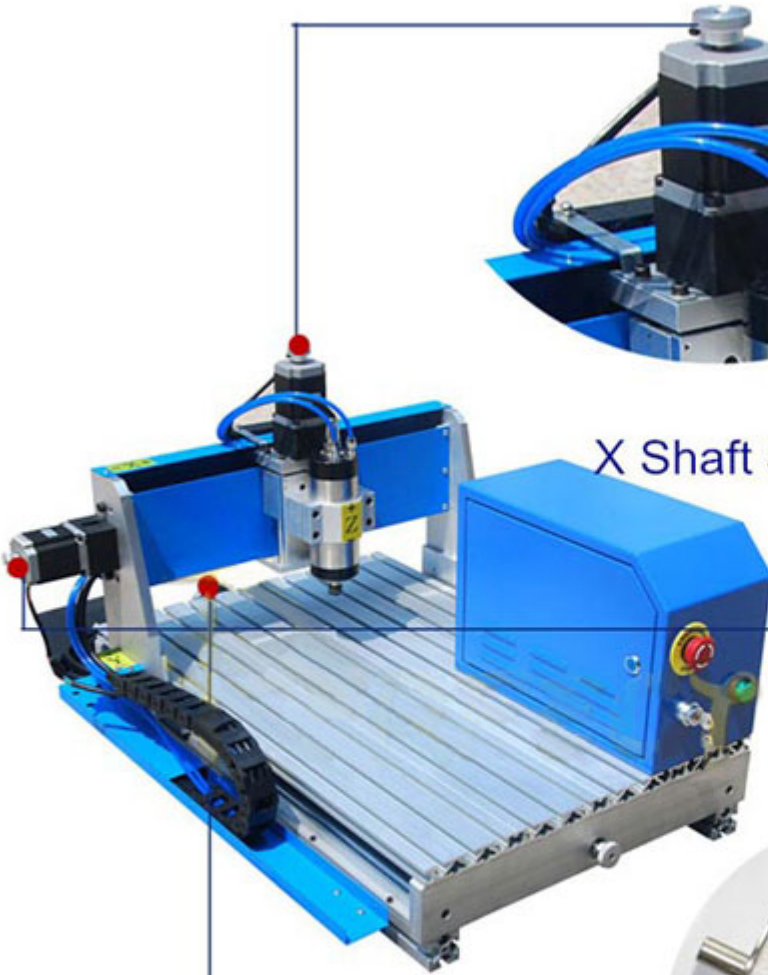
Z Shaft Stepper Motor



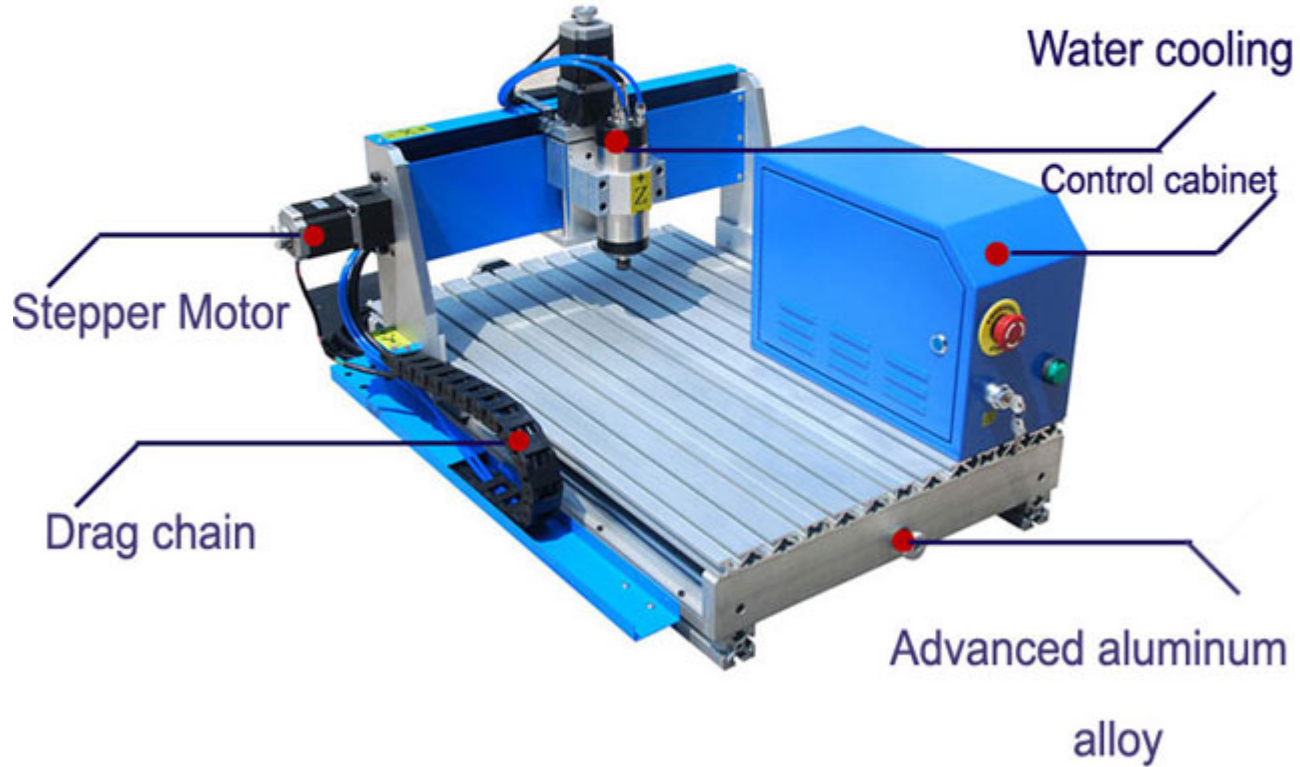
X Shaft Stepper Motor



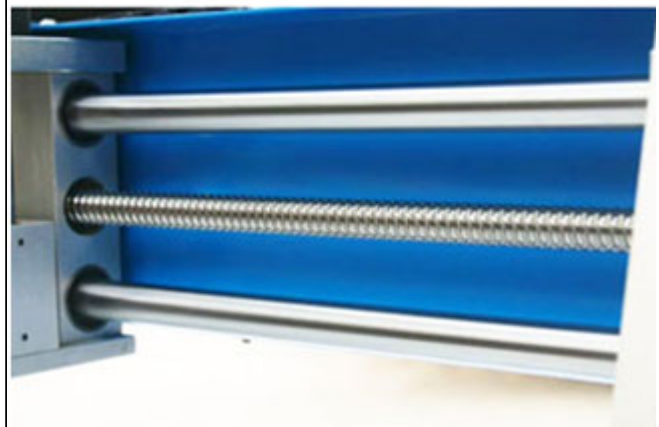
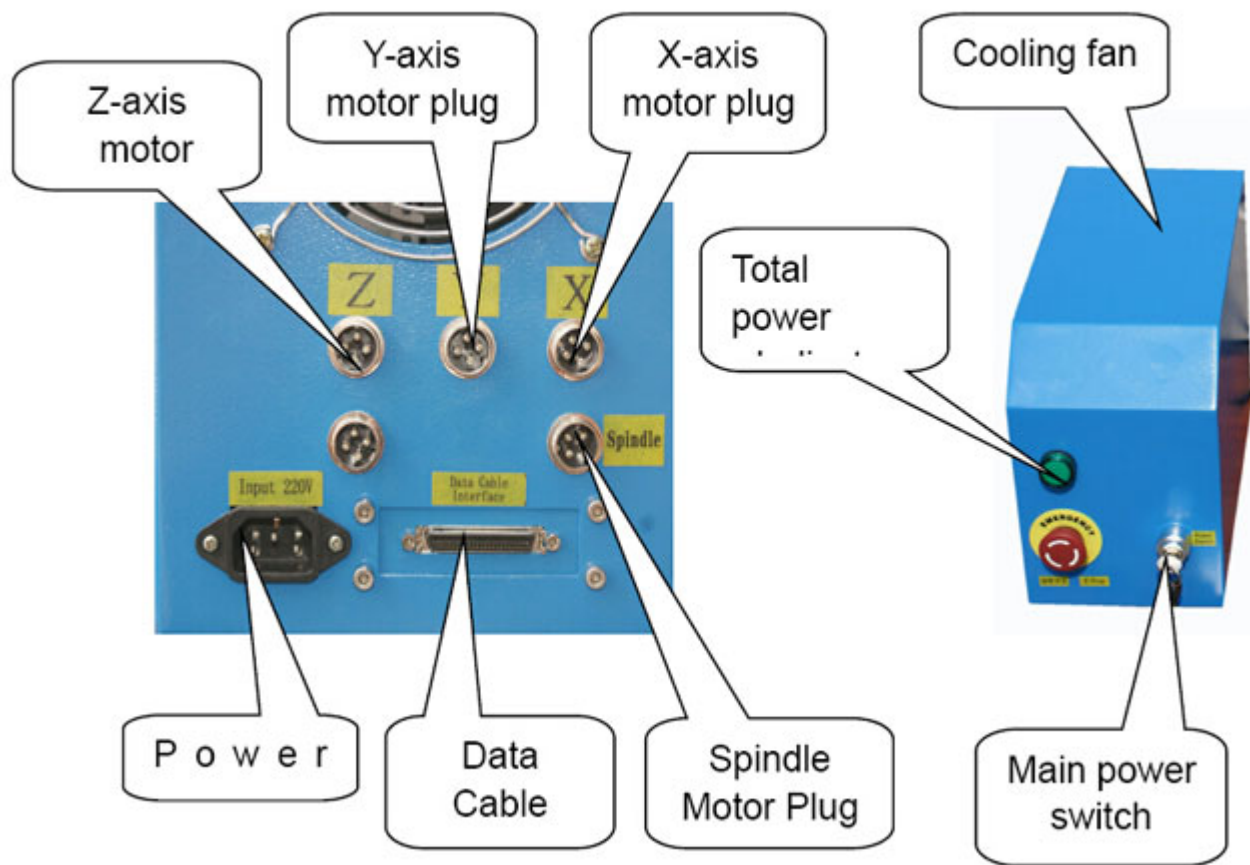
Y Shaft Stepper Motor



# REDSAIL CNC Router RS-4060



Distribution box specification



Control cabinet adopts frequency converter to control. Adopt advanced technology in the United States. Fully digital drive, The RS4060's has features of high quality and more stable performance.

X, Y and Z axes are transmitted by imported ball screw. Smooth operation, to ensure machine high precision.





Great power driving motors and improved driving system, ensure this small [cnc router](#) running with high speed and good stability.

High quality brand and 800w water cooling spindle with great power and super cutting capability.

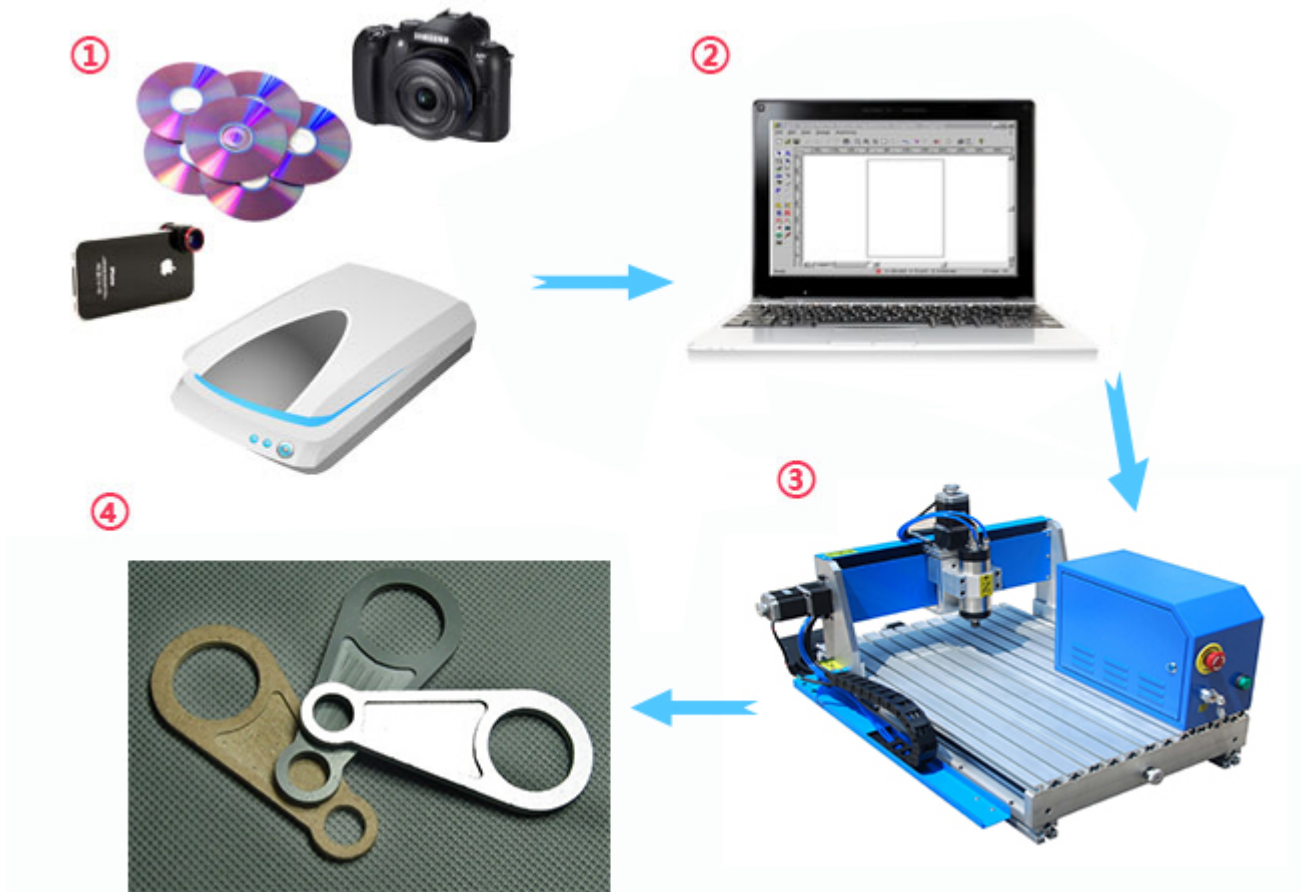
#### Function Instructions of DSP handle

- 1) Complete off-line operation.
- 2) Directly read files on the disk U.
- 3) Can process very large G-code or PLT files.
- 4) The capacity of pre-inspecting processing file can avoid writing or design errors of the processing file and prevent the materials being placed beyond processing range.
- 5) Good self-diagnostic capability, can diagnose a variety of input and output signals and increases the capacity of remote maintenance.
- 6) Fully automatic dynamic updates.
- 7) The system supports display in both Chinese and English.
- 8) Can process some of the files by selecting the row number.
- 9) Convenient and reliable, to protect power-down and restore breakpoints.
- 10) Acceleration and deceleration is more stable during processing and reduce mechanical shock effectively.
- 11) Support high-division, which can ensure the high-precision and high-speed processing.
- 12) Directly support linear and circular interpolation.

## Usage

Various materials can be applied by the machine, such as PVC, Acrylic, wood, PCB.

- 1) Assembling and locating the CNC machine on steady desk well.
- 2) Make sure that your computer has a on-board parallel port output.
- 3) Installing a CNC control software and Drive such as the MACH 3 or EMC2 on your computer.
- 4) Connecting the control box with the CNC machine and you computer.
- 5) Following our manual or guideline to set up the software.
- 6) You can enjoy making you dream with using our CNC.



## Application

?PVC materials, plastic, bamboo, acrylic, ABS.

?Wood: can process redwood furniture products.

?Advertisement: advertisement label, marking made, acrylic cutting, mold, gifts, woodworking building model processing and production.

?Other industries: produce exquisite relief, video sculpture, three-dimensional art works.

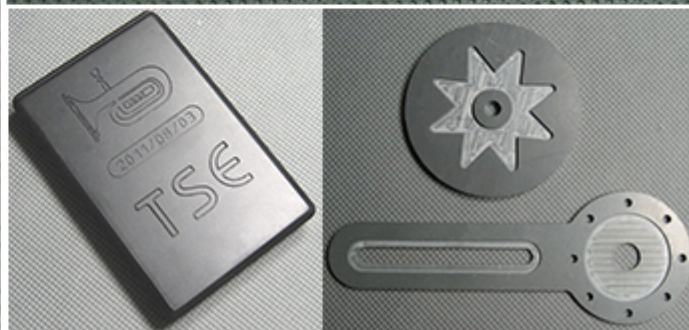
?Working materials: Cutting aluminum plate, 3D ornamental engraving, plastics, etc.











Process





## Specifications

|                       |   |
|-----------------------|---|
| Model                 | CNCR-RS4060   |
| X, Y, Z Guide         | Rolling ball screw  |
| X, Y, and Z Work Area | 600mm x 900mm (23.6in x 35.4in)                                 |
| Max feeding height    | 100mm(3.9in)  |
| Drive type            | Stepper motor   |
| Spindle               | 800W high speed   |
| Max Speed             | 4000mm/min  |
| Resolution            | ±0.05mm   |
| Repeatability         | ±0.05mm   |
| Interface             | DSP handle (read USB memory directly) NC Studio optional/Mach 3 |
| Command code          | HPGL, G-code  |
| Spindle tools         | ±3.175, ±6  |
| Power                 | AC220V±10%/50~60Hz  |

### Common Material and Processing Parameter

Specification below is only for your reference:

Engraving Processing involves all kinds of industries, widely distribution, crafts industry, advertising industry, stamp industry, wood processing, artwork model, architecture industry, mechanical process, etc.

Applicable material is widely used including metal, stone, PVC board, ABS board, acrylic, simulation stone, two-player plate, aluminum plastic board, etc.

| Processing Method | Applicable Materials              |            | Material Thickness (mm) | Processing speed (mm/s) | Spindale Speed (rpm/min) |
|-------------------|-----------------------------------|------------|-------------------------|-------------------------|--------------------------|
| Cutting           | Plexiglas (Acrylic)               |            | 3                       | 10-14                   | 16000-18000              |
|                   |                                   |            | 5                       | 10-12                   | 18000-20000              |
|                   |                                   |            | 10                      | 8-9                     | 18000-20000              |
|                   |                                   |            | 15                      | 6-7                     | 19000-21000              |
|                   |                                   |            | 20                      | 5-6                     | 20000-22000              |
|                   | PVC Plate (Anticlockwise cutting) |            | 20                      | 8-12                    | 18000-20000              |
|                   |                                   |            | 15                      | 10-14                   | 16000-18000              |
|                   |                                   |            | 10                      | 15-20                   | 16000-18000              |
|                   | Hibiscus plate                    |            | 10                      | 20-25                   | 16000-18000              |
|                   |                                   |            | 15                      | 20-25                   | 16000-18000              |
|                   |                                   |            | 20                      | 15-20                   | 18000-19000              |
|                   | MDF                               |            | 10                      | 10-14                   | 17000-19000              |
|                   |                                   |            | 15                      | 8-10                    | 18000-20000              |
|                   |                                   |            | 18                      | 6-8                     | 18000-20000              |
|                   | Two-layer plate                   |            | 1.5                     | 12-20                   | 12000-18000              |
| Engrave           | Color Plate                       | Badges     | \\                      | 18-24                   | 12000-16000              |
|                   |                                   | Door plate | \\                      | 25-35                   | 12000-16000              |
|                   | 3D processing                     |            | \\                      | 10-15                   | 18000-20000              |

DSP Handle Parameters Summary

|                         |  |
|-------------------------|--|
| Processor               | Built-in 128G memory ( removable storage technology,which can support processing any size of file )                  |
| Display                 | 128 points * 64 points, monochrome LCD   |
| Communication Interface | USB and U disk.  |
| Support document form   | G code, PLT, ( users can custom)   |
| Linkage axes            | 4-axis 3 linkage   |
| Language                | Chinese, English, Russian, French, Japanese, etc.<br>Language can be customized according to customers'requirements. |
| Operator interface      | Button-driven and menu-driven  |



|                                       |                                       |
|---------------------------------------|---------------------------------------|
| Interpolation method                  | Straight line and arc                 |
| Minimum input unit (mm)               | 0.001                                 |
| Minimum resolution (mm)               | 0.001                                 |
| Cutting Speed (mm / min)              | 64000                                 |
| Maximum running speed (mm / min)      | 1-64000                               |
| Automatic deceleration control        | No                                    |
| Straight thread, taper thread cutting | No                                    |
| Automatic blade                       | No                                    |
| Spindle speed control                 | Yes                                   |
| Detection of system data              | Yes                                   |
| Detection of processed data           | Yes                                   |
| Adjustment of processing position     | Yes                                   |
| Multi-processing coordinate system    | Support 9 workpiece coordinate system |
| Breakpoint continued processing       | Yes                                   |
| Copy Processing                       | Yes                                   |
| Power-down data protection            | Yes                                   |
| Working temperature                   | 0°C to +70°C                          |
| Relative humidity                     | ?90? Non-condensing                   |
| Working voltage                       | DC24V 2A                              |
| External voltage                      | DC5V                                  |
| Power                                 | 2W                                    |

|                            |  |
|----------------------------|--|
| Dimension (L * W * H) (mm) | 156*110*38                             |
| Model                      | CNCR-RS4060                            |
| X, Y, Z Guide              | Rolling ball screw                     |
| X, Y, Z Work Area          | 400 x 600 x 55mm(15.7" x 23.6" x 2.2") |
| Max feeding height         | 90mm                                   |
| Drive type                 | Stepper motor                          |
| Spindle                    | 800W high speed (Air cooling)          |
| Max Speed                  | 4000mm/min                             |
| Resolution                 | ±0.05mm                                |
| Repeatability              | ±0.05mm                                |
| Interface                  | DSP Handle                             |
| Command code               | HPGL, G-code                           |
| Spindle tools              | ±3.175, ±6                             |
| Power                      | AC220V±10%/50~60Hz                     |



NETSUITE®  
ONE SYSTEM. NO LIMITS.

PayPal



Member  
INTERNATIONAL  
SIGN ASSOCIATION



Member  
Specialty Graphic Imaging Association



ACCREDITED  
BUSINESS

Copyright © 1999-2012 by Beijing ChinaSigns Information Company Limited All Rights Reserved.

Email:info@sign-in-china.com Tel:+86 132 6410 3286 www.sign-in-china.com