



[?????????? ??????? ?3+ 6 ?????? \(329x480??\) \(??????????
??? ??????????\)](#)

Item Code: SIC-SZ-SLJ-A3-3E



FOB Price: **?? 231 433.00/????????**

Mini Order: 1 ????????

Shipping Weight: ★★★★★

Average Rating: 375.5lb (170.67kg)

[Inquire Now](#)

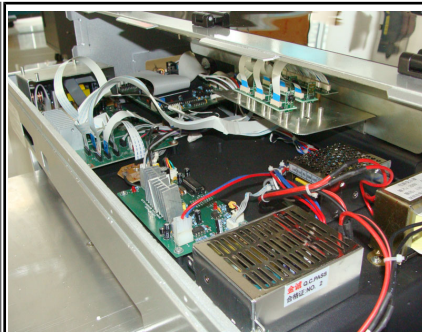
Overview

?? ???? ?? ?????????? (????, ?????, ???, ?????, ?????????, ?????????? ? ??) ? ?????????????? (????, ?????, ???, ?????, ?????????? ?????, ?????????? ????? ? ??) ?????????.

- ??????? ?????? ?4 ?? ?????????? 1440dpi 2 ??????, 5 ?????? ?? 2880dpi;
- ?????? ?? ?????? ?? ?????????? ????????????? (?????? ?????? ?? ???);
- ?????? ?????????? ?????, ????????????????? ????????????? ?????????? ?????;
- ?????????????? ??????? ???, ?????? ?????? ? ???????????;
- ??????? ?????????? ???????;
- ?????????? ? ?????????? ?????????????;
- ?????????????? ? ????????????? ???????.



?????? ???????????



????????????? ??????? ?????????



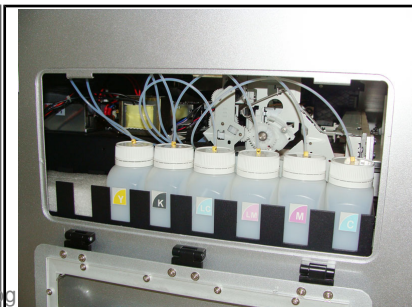
????????????? ???????????
??????????

a3 size printer High-precision Actuating Device

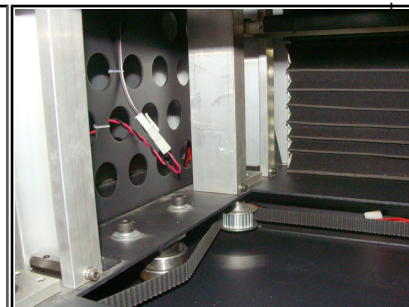
Image not found

/userfiles/2010-Aug/high-precision-actuating-device (1).jpg

?????????? ??????? ???????????????????



???????? ??????? ???????



???????? ???????????????

Application:

Individualized printing: boutique, mobile phone decoration store, gift shop, etc.

Crystal selection: on-site fabrication at scenic spots or down streets.

Proofing: manufacture of various traditional printing proof plates.

Photostudio: digital image production.

Garment industry: proofing or color printing of pictures.

Leather ware: color printing of top-grade leather goods.

Electronic products: color printing of cassette-type disks, laptopscases, MP3 and MP4.

Gift package: print color forind ividual package.

Signage production: different types of signage.

Decoration industry: color print of ceramic tiles and ceilings.

Toy industry: print cartoon work, comics and animations.

Materials that can be printed

Organic materials: acrylic, Plastics (ABS, PVC, PP, PE, PU), leather, wood articles, textile fabrics, silica gel etc.

Inorganic material: ceramics, glass, stone, crystal etc.

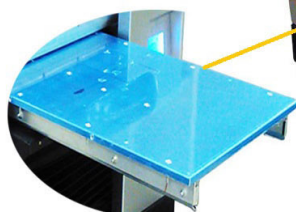
Metallic materials: gold, silver, copper, iron, stainless steel, aluminum alloy etc.



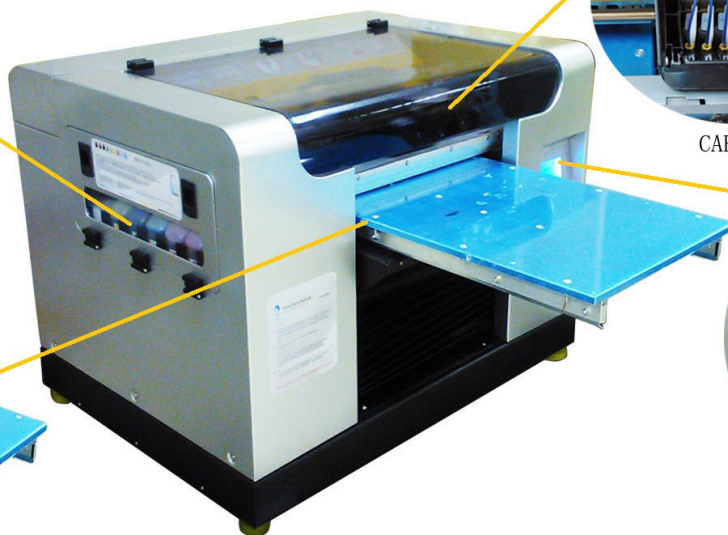
INK SUPPLY



CARRIAGE UNIT

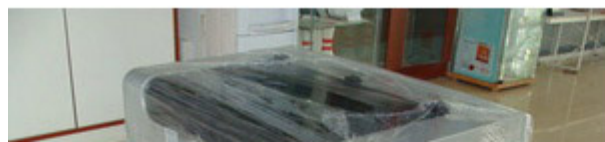


PRINTING FLATBED



CONTROL PANEL

PACKING LIST



Operation Flow



???????:



Specifications

????? ??????	Y,M,C,K,Lc,Lm	?????. ?????? ??????	329x480??
???????????	5760x1440dpi	?????. ??????? ??????????	200??
????????????? ??????	540 ????? (90 ?????x6?????)	????????????? ??????	1,5 ???????????
????????? ??????	A3, 3 ??? (??????? ????????)	?????????	AC220-240?/AC110-120?, 50?60??
????????? ??????	USB2.0	????????? ??????	?????????????: 5?35°C; ????????????: 20?80%
???	80?? (?????), 121?? (?????)	??	Microsoft Windows98/2000/Me/XP
????????????? ????????	89x75x56,5??	??? ??????	?????????????????
??????? ??????????	111x95,5x80,5??	??????? ????????	150??/???? (9 ??????)

Tags

[A3 Size Digital Inkjet Printer](#) [A3 size 6 colors inkjet printer](#) [a3 inkjet photo printer](#) [a3 size printer](#)

QA

Q	Does the printer support UV ink?
A	No, it doesn't. It support ECO ink and water based ink. <div>Reply by sign-in-china</div>
Q	Can the printer recognize that a new media been loaded and automatically restart printing?
A	No. Maybe you could set time interval for make it happen. <div>Reply by sign-in-china</div>
Q	What is the base machine of A3-3E flatbed printer?
A	It is EPSON Stylus Photo 1390. <div>Reply by sign-in-china</div>

Q	What is the print speed for medium quality?
A	<p>It will take you 60 seconds if you adopt 720 dpi and print on one A4 size paper.</p> <p>Reply by sign-in-china</p>
Q	What is the print speed for high quality?
A	<p>It will take you 120 seconds if you adopt 1440 dpi and print one A4 size paper.</p> <p>Reply by sign-in-china</p>
Q	Is it difficult to replace the print head and pump? Can I do it myself?
A	<p>It is easy to replace the print head, because the printer adopts module design.</p> <p>Reply by sign-in-china</p>
Q	What elements need to be replaced periodically?
A	<p>Print head and ink pump.</p> <p>Reply by sign-in-china</p>
Q	Do I have to change the print head every year?
A	<p>Yes, one year is next to the print head's life.</p> <p>Reply by sign-in-china</p>
Q	If I would like to use printer for t-shirts and other material, that means I need to buy 2 different print heads and two different cartage and print stations?

A

Yes. When solvent ink meet for water based ink, the print head will be blocking.
But I suggest you buy 2 printers not 2 set of print systems.

Reply by [sign-in-china](#)

Q

What is the difference between uncoated ink and Water based ink (DuPont). Is water based ink only for T shirts?

A

Uncoated ink is belonging to ECO ink not water based ink.
Water based ink (DuPont) is specially used for T-shirt.

Reply by [sign-in-china](#)



Copyright © 1999-2012 by Beijing ChinaSigns Information Company Limited All Rights Reserved.

Email: info@sign-in-china.com Tel: +86 132 6410 3286 www.sign-in-china.com