



51" x 35" (1300mm x 900mm) Ving Laser Cutter, with Reci S4 Laser and Electric Lifting Worktable

Item Code: LCM-SF1390-4



FOB Price: ???,413 131/????????

Mini Order: 1 ????????

Shipping Weight: ★★★★★

Average Rating: 1389.3lb (631.49kg)

[Inquire Now](#)

Overview

Description:

51" x 35" (1300mm x 900mm) Ving Laser Cutter, with Reci S4 Laser and Electric Lifting Worktable.

To be used to: This 1390 Ving brand co2 laser cutting engraving machine is applied in advertising industry, decoration industry, handicrafts, paper, packaging industry, etc.

This machine can process nonmetal materials such as acrylic, MDF, plywood, paper, plastic, fabric, leather, rubber, ceramic, tile, glass, marble and so on.

Main Configuration:

Max. Working Area: 51" x 35" (1300mm x 900mm)

Laser Power: Reci S4 CO2 glass laser tube 100W-130W (Normal lifespan: about 10000 working hours)

Working Table: Blade + Honeycomb

Cooling Type: CW5000 water cooling and system

Resolution Rate: +/-0.05mm

Minimum Letter: 0.5mm

Supported Graphic Formats: BMP, HPGL, PLT, DST, AI

Control Software: DSP control system

Compatible Software: CorelDraw, AutoCAD, Photoshop

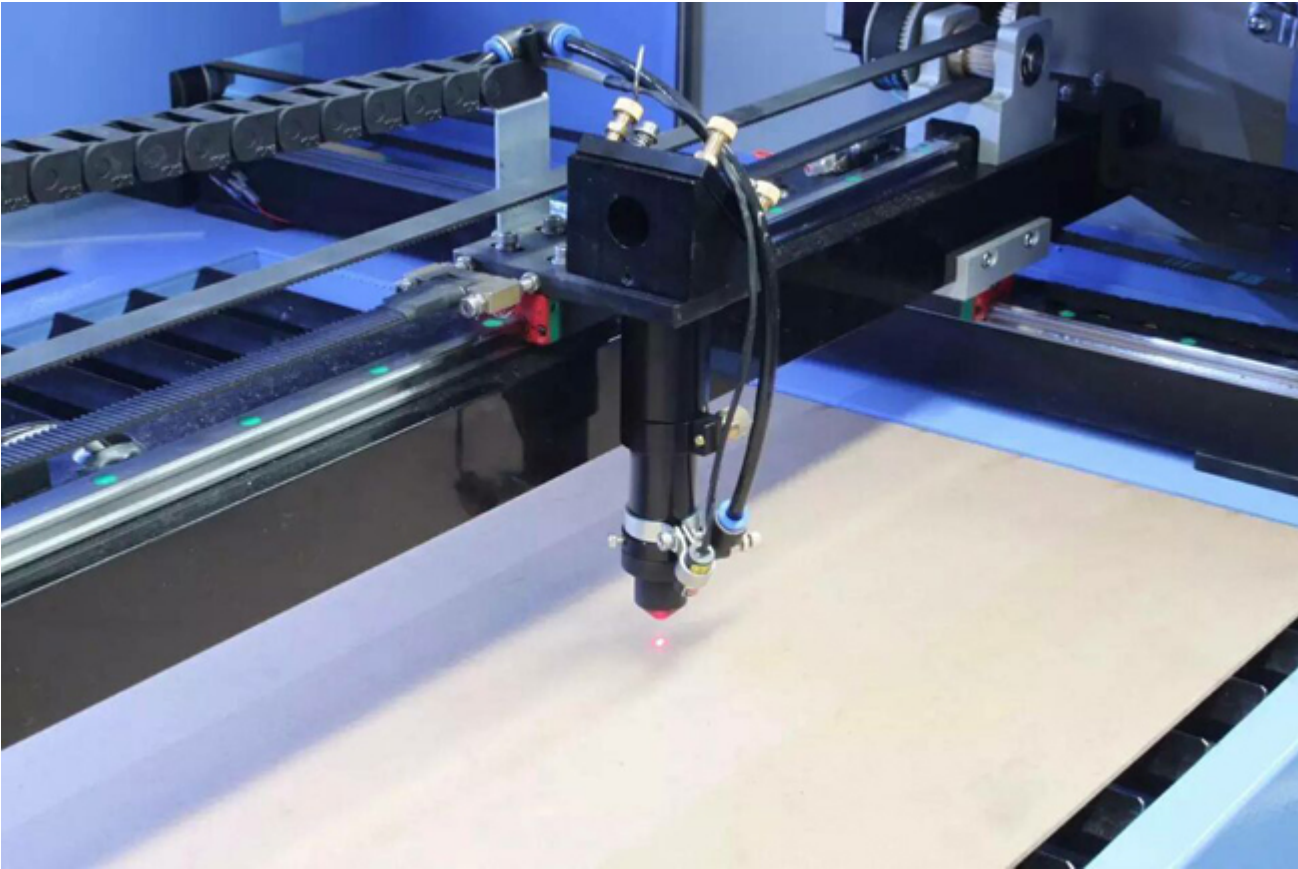
Driving System: Stepper

Working Voltage: AC 110-220V +/- 10%, 50-60Hz

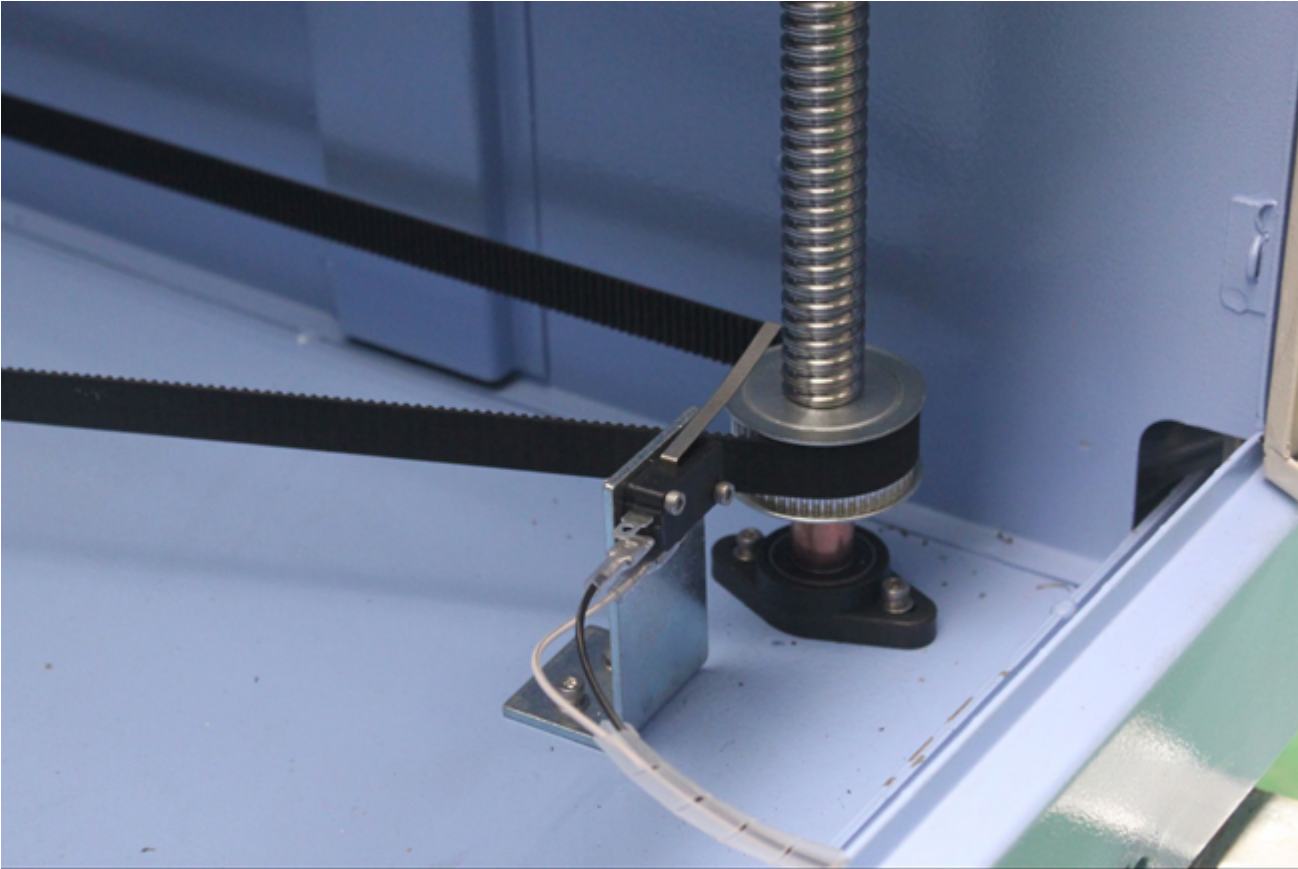
Working Temperature: 0-45 degree

Working Humidity: 5% - 95%

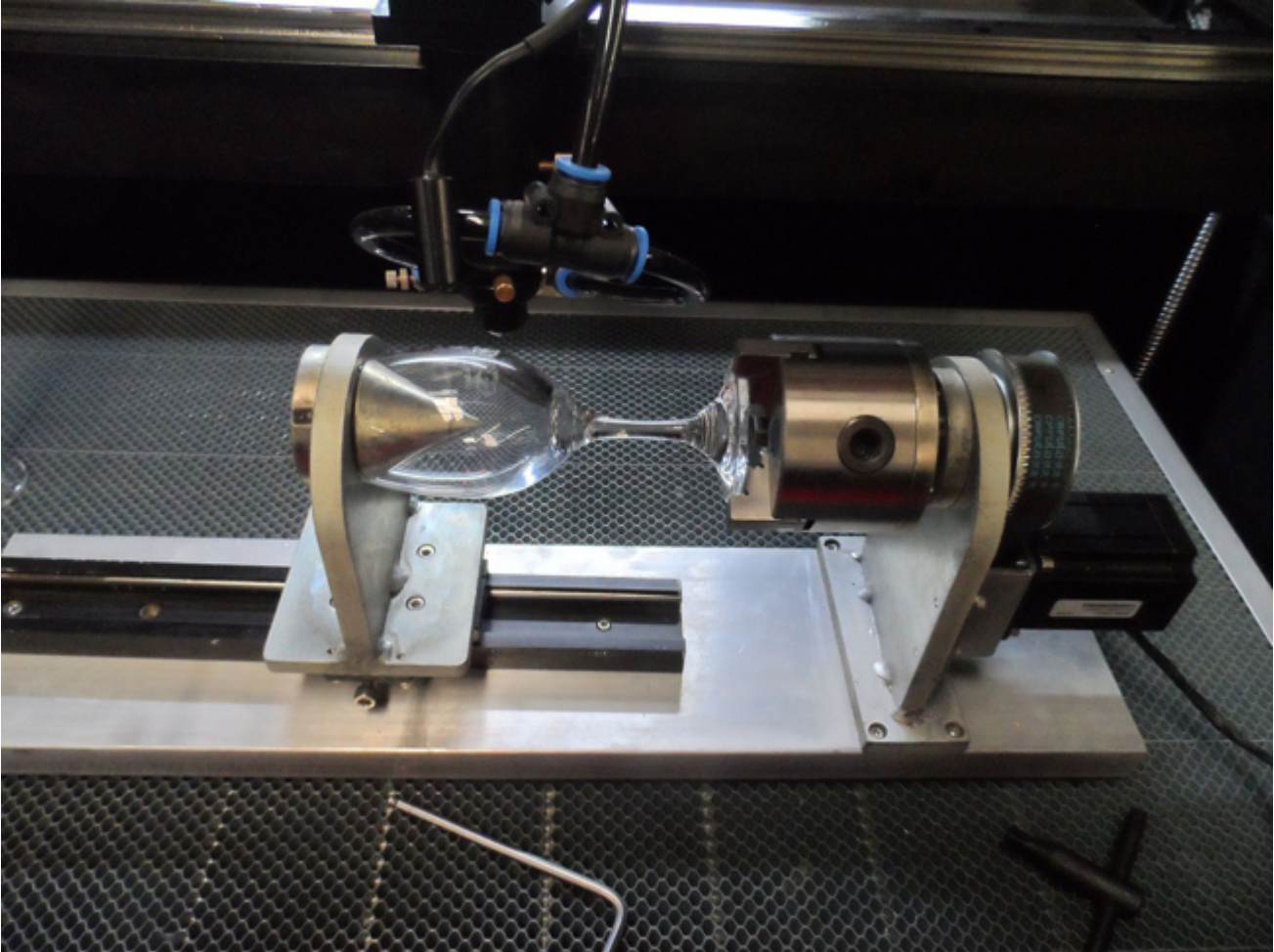
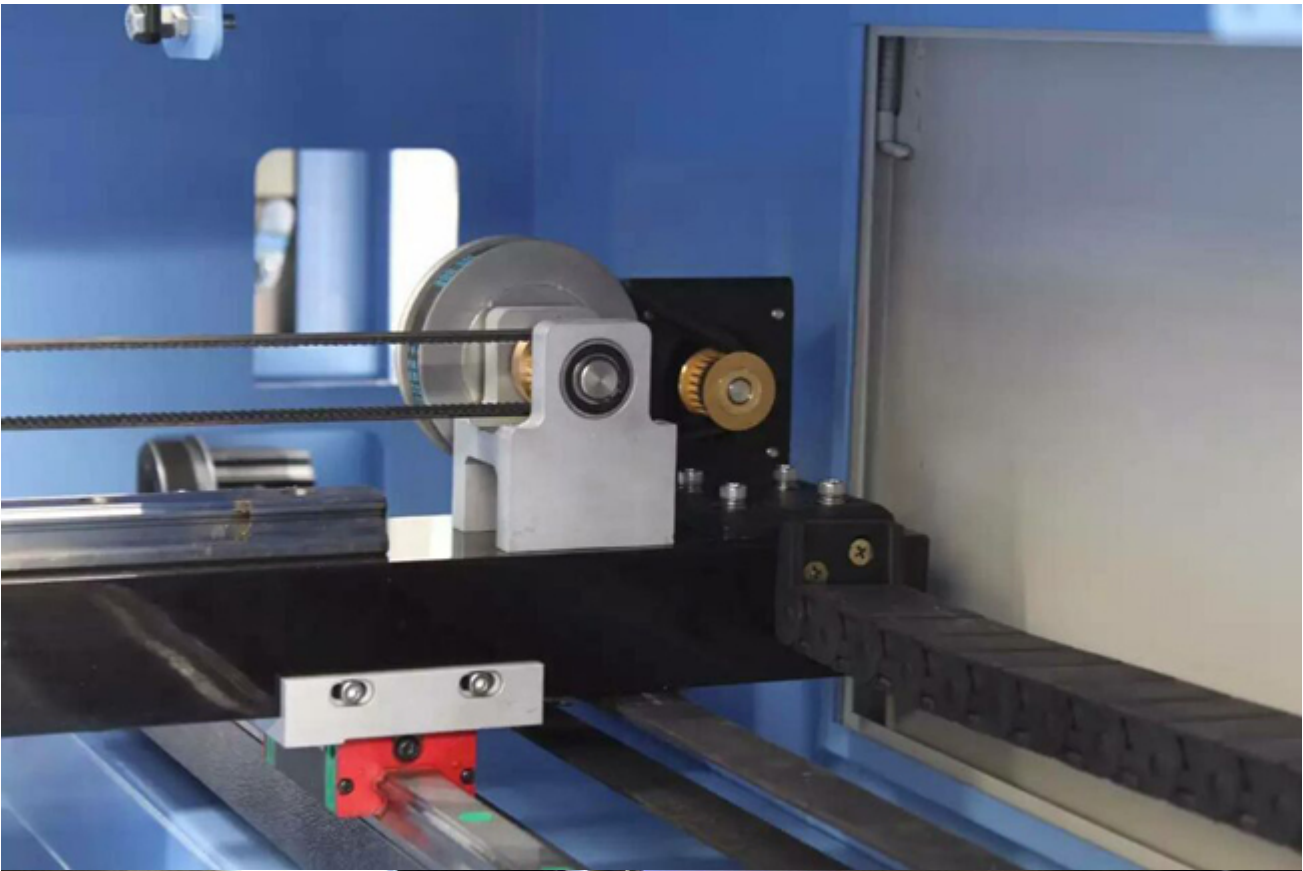
Details



Laser head with red dot



Electric Lifting Worktable



Rotary Fixture(Optional)

Feature:

- This series CO2 laser cutting machines adopt DSP digital controlling technology, self-design laser power supply, incorporate designed frame and structure to guarantee stable work. The newest software is matched to AutoCAD, CorelDraw, CAD and all other graphics processing software for outputting original graphics. This series laser cutter firstly use USB port data interface which supports hot-plugging and momentary data transmission to realize high efficiency without accounting computer resource. The LCD controlling panel brings friendly computer-human interface and easy operation.
- The most advanced DSP controlling technology developed firstly in this field offers functions of successive, rapid and curved cutting, optimization of shortest processing path to create high efficiency. Compensation of luminance decrease is made automatically in the course of engraving to keep identical cutting in different areas. Production efficiency is greatly imported through using rapid controlling software for cutting and buffering function in high speed movement.
- Professional accessories suitable for various processing such as aluminum alloy honecomb bottom board of different bore diameters made of aluminum alloy, metal columns of different intervals and negative pressure adsorption device for soft materials can be provided according to customers' demands and materials, which realizes design and processing on-the-spot.
- The newest software is matched to AutoCAD, CorelDraw, CAD and all other graphics processing software for outputting original graphics. Advanced color management supports any color and defines engraving sequence freely to realize one time or whole output.
- It uses USB port date interface with large mass storage device to provide high working speed and efficiency.

Usages

I. Machine Installation

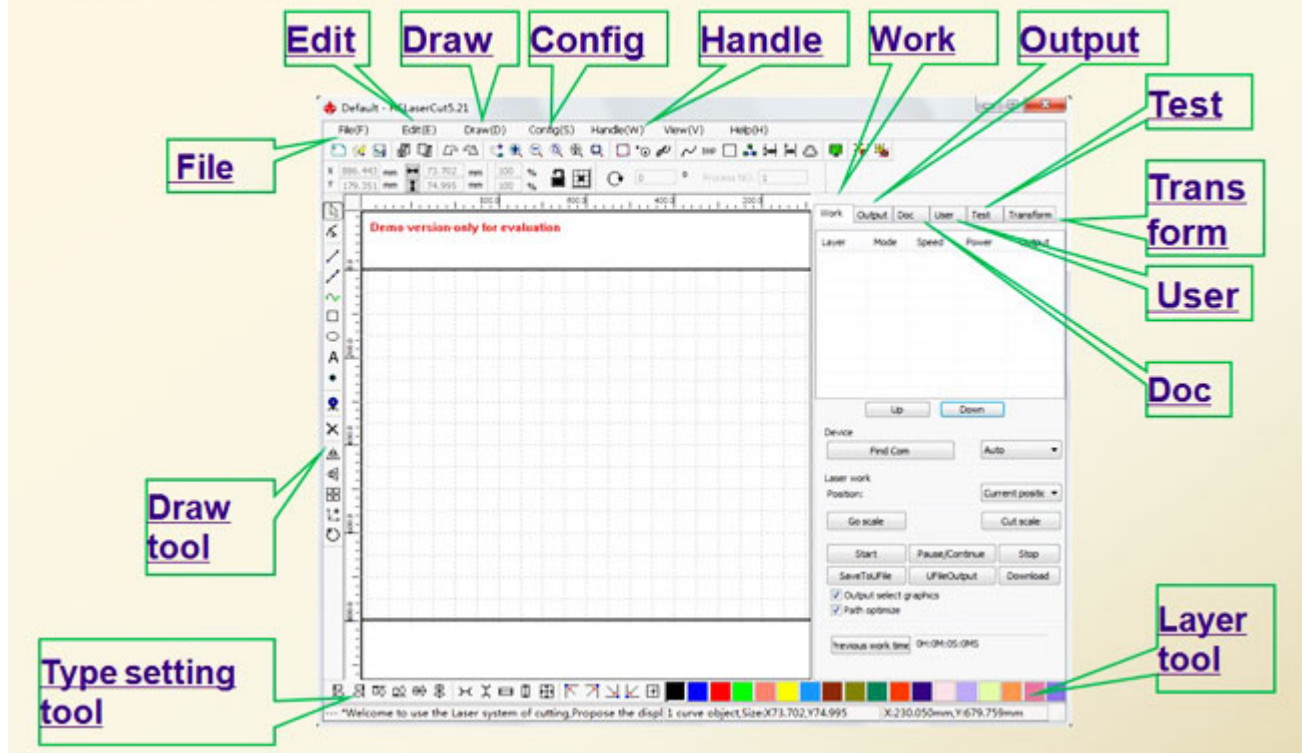
Include: Laser tube assembly; Water chiller installation; Air pump connection; Exhaust fan installation; Grounding wire connection.



II. Software and USB driver Installation

processing parameters, output images to our laser cutting machine, finish the work.

Main Interface of the Software



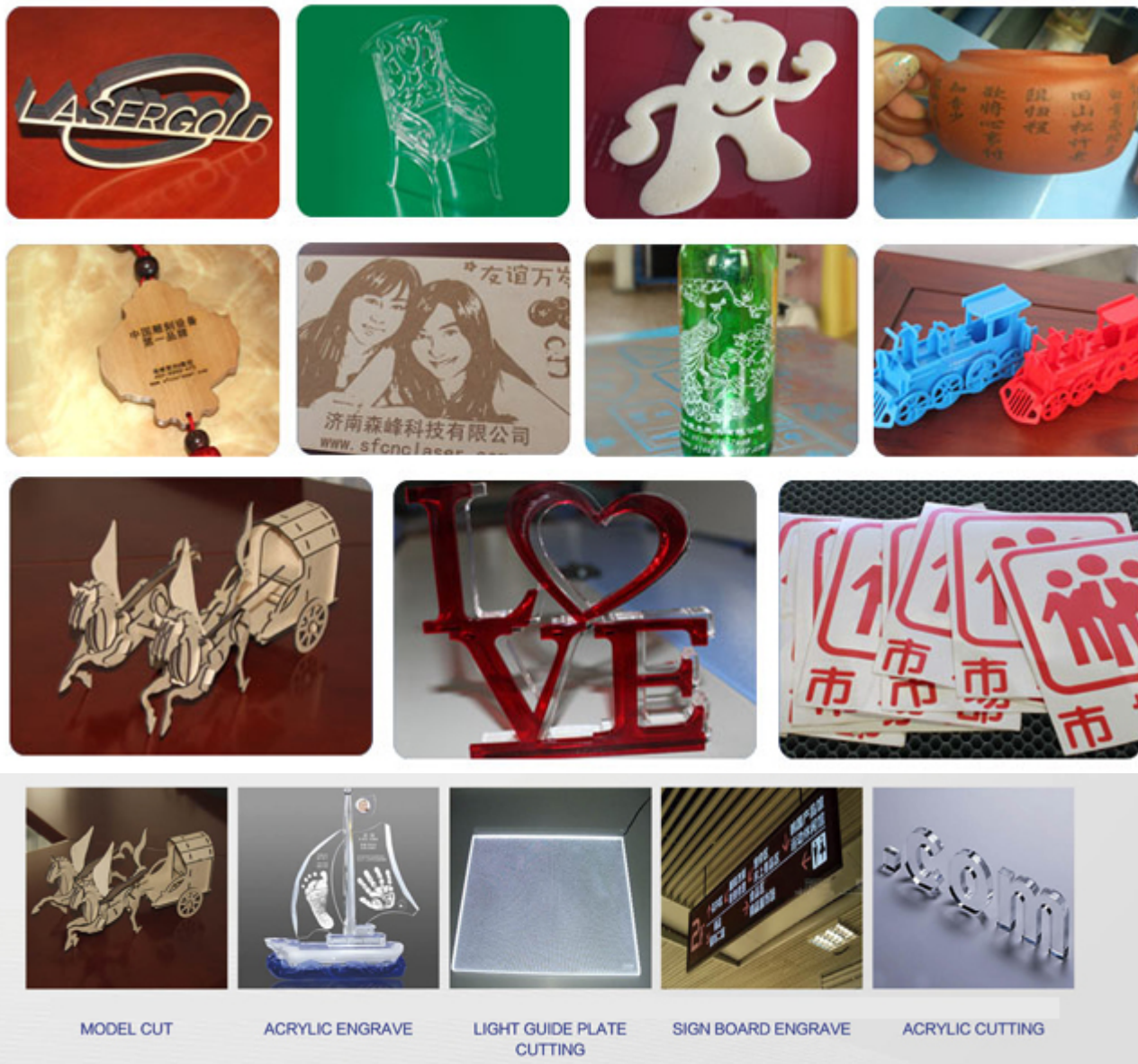
IV. Finished works!



Application:

Applicable Industries: Garment, leather, cloth toys, computer embroidery cutting, mold, crafts, bamboo and wood, advertising and building decoration, packaging and printing, paper products, etc.

Applicable Materials: Rubber, plastic, cloth, leather, woolens, crystal, organic glass, tile, jade, bamboo and wooden products, etc.



Specifications

Specification:

Model	LCM-SF1390-4
Processing Area	1300mm x 900mm (51" x 35")
Laser Power	Reci S4 CO2 glass laser tube 100W-130W (Normal lifespan: about 10000 working hours)
Laser Type	Sealed Co2 glass laser tube
Cooling Mode	CW5000, Water cooling and protection system
Resetting Positioning Accuracy	±0.01mm

Compatible Software	CorelDraw, AutoCAD, Photoshop
Engraving Speed	1-800mm/s
Cutting Speed	1-600mm/s
Resolution Ratio	≥0.0125mm
Position System	Red Dot
Interface	USB
Minimum Shaping Character	letter 0.5mm, Chinese 0.5mm
Support Graphic Format	DST, PLT, BMP, DXF
Working Voltage	AC 110 - 220V±10%, 50 - 60Hz or depend on customer
Operating Temperature	0-45°
Operating Humidity	5-95%



Copyright © 1999-2012 by Beijing ChinaSigns Information Company Limited All Rights Reserved.

Email:info@sign-in-china.com Tel:+86 132 6410 3286 www.sign-in-china.com