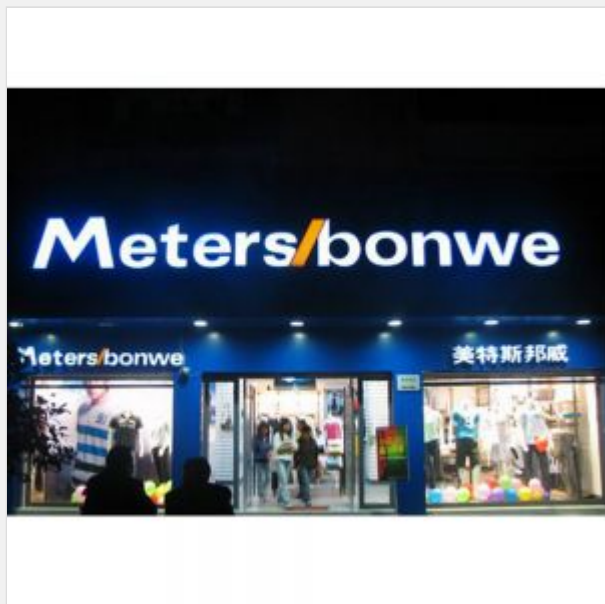




## Outdoor Customized LED Acrylic Channel Letters (Stainless Steel Border), Front Lit Illuminate

Item Code: CLM-BBZ-FL01



FOB Price: ???2 579/??.

Mini Order: 1 ??.

Average Rating: 1b (kg)

[Inquire Now](#)

### Overview

Easy 3 Steps to Custom Made Your Customized Stainless Steel Border LED Acrylic Channel Letters:

**Step 1.**

Upload your PLT format image, get price.



**Step 2.**

Click buy now to place order.

[Buy Now](#)

**Step 3.**

Make payment and wait for your item.

[Checkout](#)

**Attention:** Please tell us the color you want when you place an order.

#### Related Quotation Instructions

Our website quotation is designed by an expert team that just provide a vector graphic (no matter simple texts or complicated logo images) in \*.plt format (which is exported by CorelDraw), and upload it to our website, then will get a precise quotation which saves time from communicating. Comparing with the unclear estimated quotations of other websites, ours is calculated based on the actual production process and cost of channel letters as a result it helps customers save cost.

#### Description:

Acrylic LED Letters company embossed letters logo sign letters

Metal Letter sign, light up letters, front lit led channel letter sign

LED illuminated Letters-Stainless steel channel letters

Acrylic LED light Letters company embossed letters logo sign letters are suitable for Shopping Mall, Airport, Bus Station, Railway, Hospital, Hotel, Pub, Restaurant, coffee store, Club, Fast Food Restaurant, Supermarket, Shops company etc. Best display as brand, LOGO identify, widely used in luxury brand shops such as Hermes, Chanel, Dior, Prada, D & G, Burberry, Fendi, Armani, Hugo Boss etc. The LED Acrylic Channel Letters (Stainless Steel Border) are consisted of acrylic panel, stainless steel letter shell and LED light source.

This product will be luminous on the front side of the body, and the light is very sharp and colorful in the night, very attractive to the eyes, very expressive and visual impact.

**Process:**

Laser cutting Acrylic letters and metal letters, bending machine to curves the stainless steel, Laser Welding the strips to be the metal box, then surface treatment with plating, powder-coated etc, fix the LED module in to the box, Acrylic board fixed the metal box, paste the metal parts to the letters. No fading, easy maintenance and low cost.

**Specification:**

Main body material: Acrylic

Border material: Stainless Steel

Light source: LED

Illuminate: front lit

Power source: AC110V, AC220V

Consume: vary depending on the type of LED and size of the letters.

LED lifetime: >50,000 Hrs

Working temperature: -10 ? -50 ?

Average lifetime without any errors: >5,000 Hrs

Suited for: Outdoor, waterproof, windproof

Package: single letter covered with bubble wrap, wooden case with Styrofoam. Also may be packed per the customer requirements.

Any Pantone Color Available

**Packing Include:**

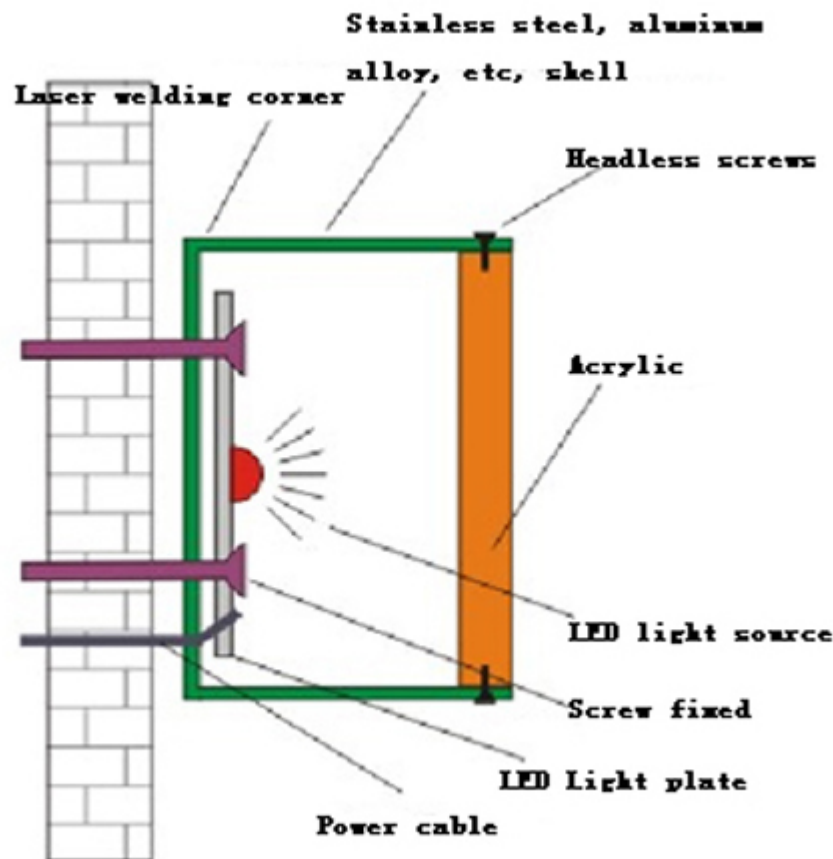
1 x Customized LED Acrylic Channel Letters (Stainless Steel border)

1 x LED Power Supply

1 x Installation Files

Fabrication time: 7-15 working days, according to order details.

**Details:**



**Features:**

Acrylic LED Channel Letters with excellent performance at light uniform diffusion, Metal box with high quality Stainless Steel. LED module wiring and fixed in the box to make the light uniform diffusion.

The stainless steel channel letter will not rust and gives long lifespan;

The stainless steel channel letter gives a strong sense of 3 dimensional effects;

The stainless steel channel letter is comparative less in weight.  
It will not turn yellow but stays in 5-8 years without obvious fading.

Light material and easy installation; Easy maintenance;

- The smooth surface and even thickness for the letters,
- Acrylic LED Channel Letters with excellent performance at light uniform diffusion, Metal box with high quality Stainless Steel. LED module wiring and fixed in the box to make the light uniform diffusion.
- Weather-resistance, UV ray-resistance and the case will not easily to be aging and fragile or fading,
- Using LED source which are low current, low voltage and safe to humans, and save up-to 80% of energy comparing with the incandescent light.
- Stable, safe and durable, the LED lifetime is up to 50,000 hours.
- Environment friendly, there are no ultraviolet and infrared spectrum, no radiation, no pollution, no mercury element and few glare. LED is cold light source which is a typical green illuminating source.
- Unification, using mold for lot production to ensure each LED Acrylic Letter same.

**Material:**

The edge strip adopts stainless edge strip which is to be bended and welded into form.

The light source adopts the super bright semiconductor LED with chip modules.

The channel surface is made of imported acrylic, and its cannellure and outlines are engraved by CNC engraver, generally the thickness is 5-10cm, however it is possible to fabricate the channel letters minimally 10cm and maximally more than 1 meter.

**Attentions for using of LED Acrylic Channel Letters (Stainless Steel Border):**

Use LED only power, don't plug into a high voltage source,

Don't leave on continuously 24 hours, or will affect the LED's lifetime.

Please fit with a protection tube at the hole for cables to avoid damage to the cable,

The cable connecting to the terminal needs to be covered by electrical tape in order to avoid oxidizing the exposed wires.

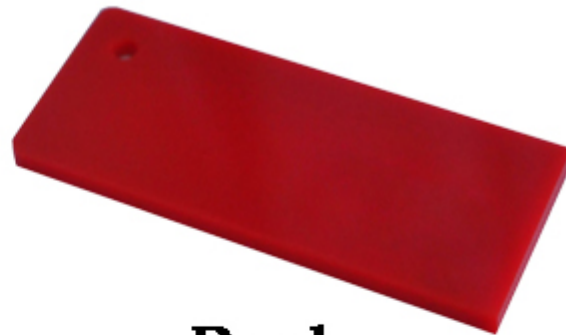
Be careful during installation, don't strike the letters.

**Color selection:**

You can choose the color of the face, border, and LED light from the following colors



**White**



**Red**



**Green**



**Blue**

**Applications:**

The signage with stainless steel bordure is widely applied, mainly for signage, imaging wall, various signs, building signs, and different indoor or outdoor high class signage as well as broad of modern office signage applications.

LED Acrylic Channel Letters (Stainless Steel Border) mainly for signage, imaging wall, various signs, building signs, and different indoor or outdoor high class signage as well as broad of modern office signage applications, it is widely used in office buildings, hospitals, hotels and malls etc. Our customers are very satisfied to due to environment friendly, safe, easy installation and excellent expression results.



Copyright © 1999-2012 by Beijing ChinaSigns Information Company Limited All Rights Reserved.

Email:info@sign-in-china.com Tel:+86 132 6410 3286 www.sign-in-china.com