



High Voltage SMD 2836 IP67 Waterproof LED Module, AC100-240V (3 LEDs, 2.5W, L110 x W28 x H8.5mm White Light)

Item Code: LEDM-GKL-MFW8A1D



FOB Price: ???.**151**/??.

Mini Order: 100 ??s

Shipping Weight: ★★★★★

Average Rating: 0.1lb (0.0325kg)

[Inquire Now](#)

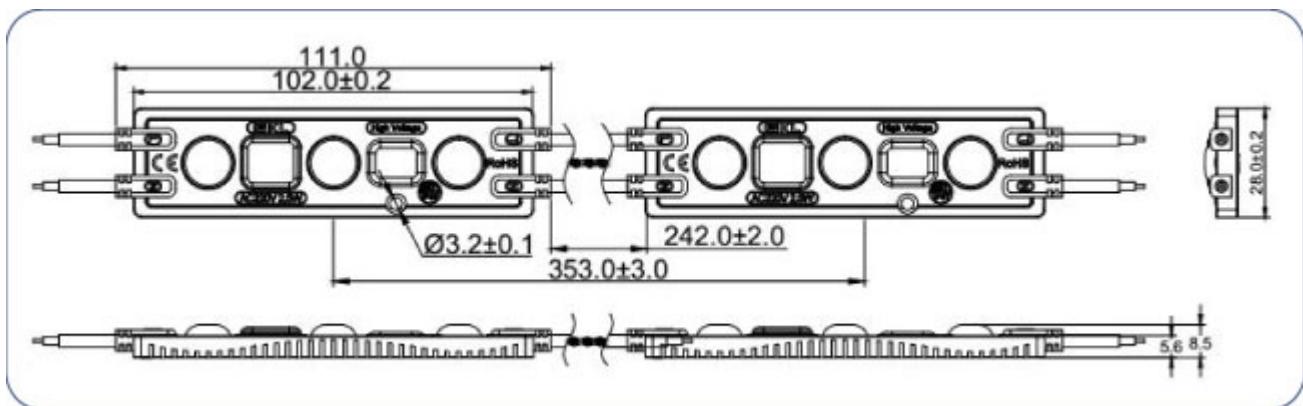
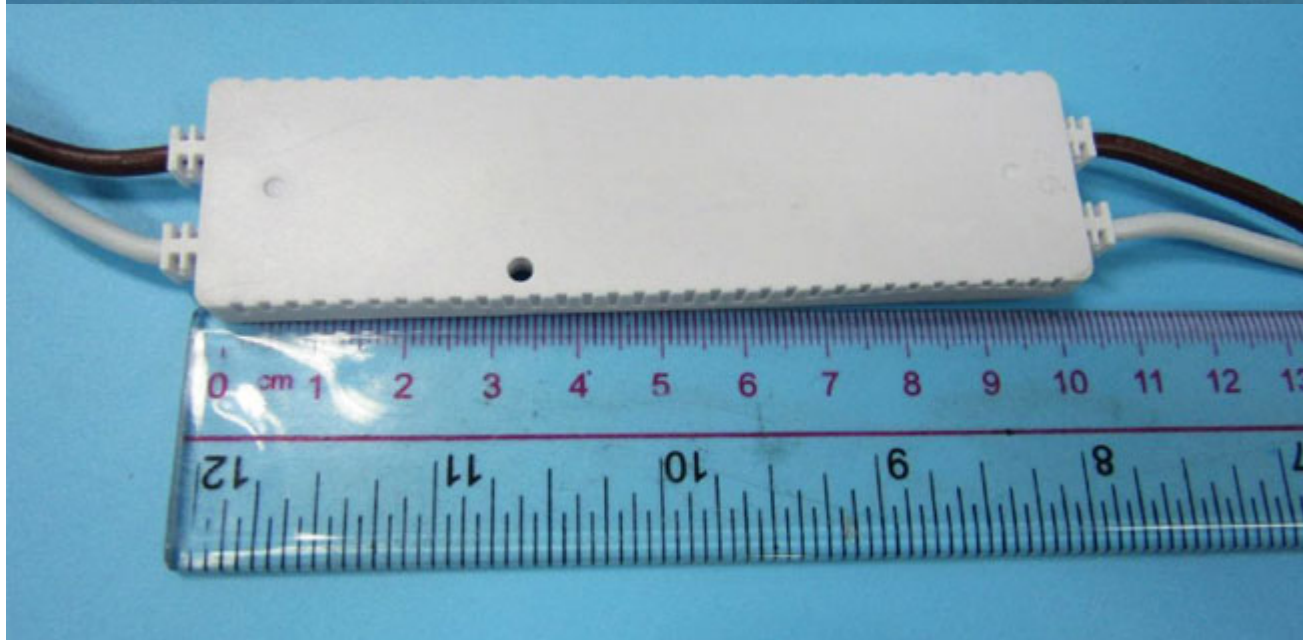
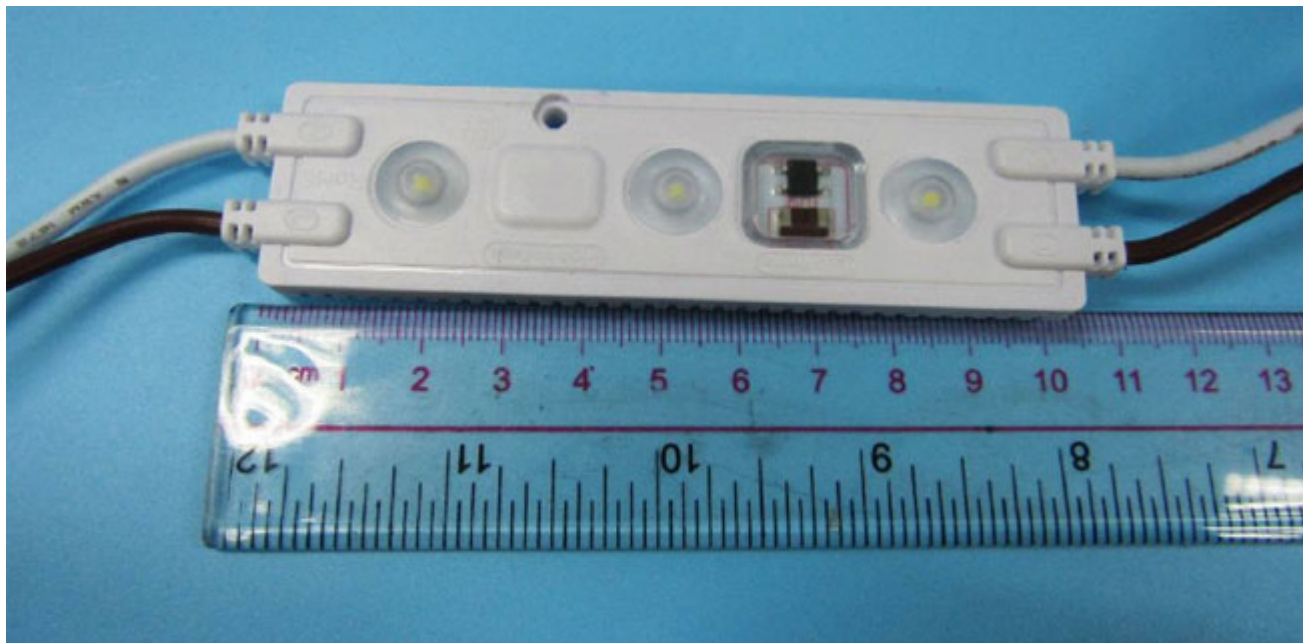
Overview

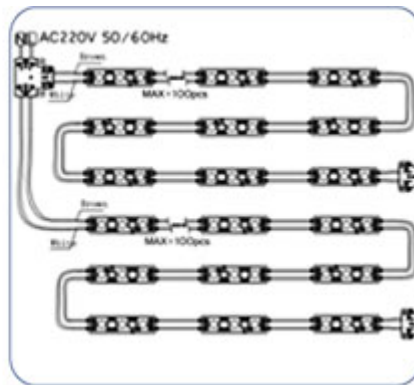
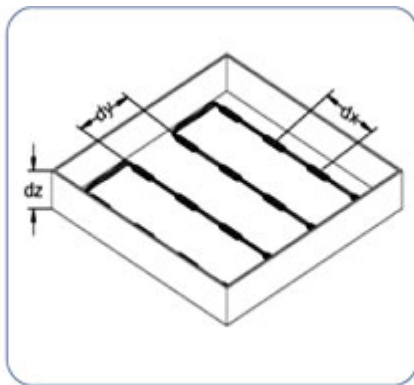
High Voltage SMD 2836 IP67 Waterproof LED Module, AC100-240V (3 LEDs, 2.5W, L110 x W28 x H8.5mm White Light)

Description:

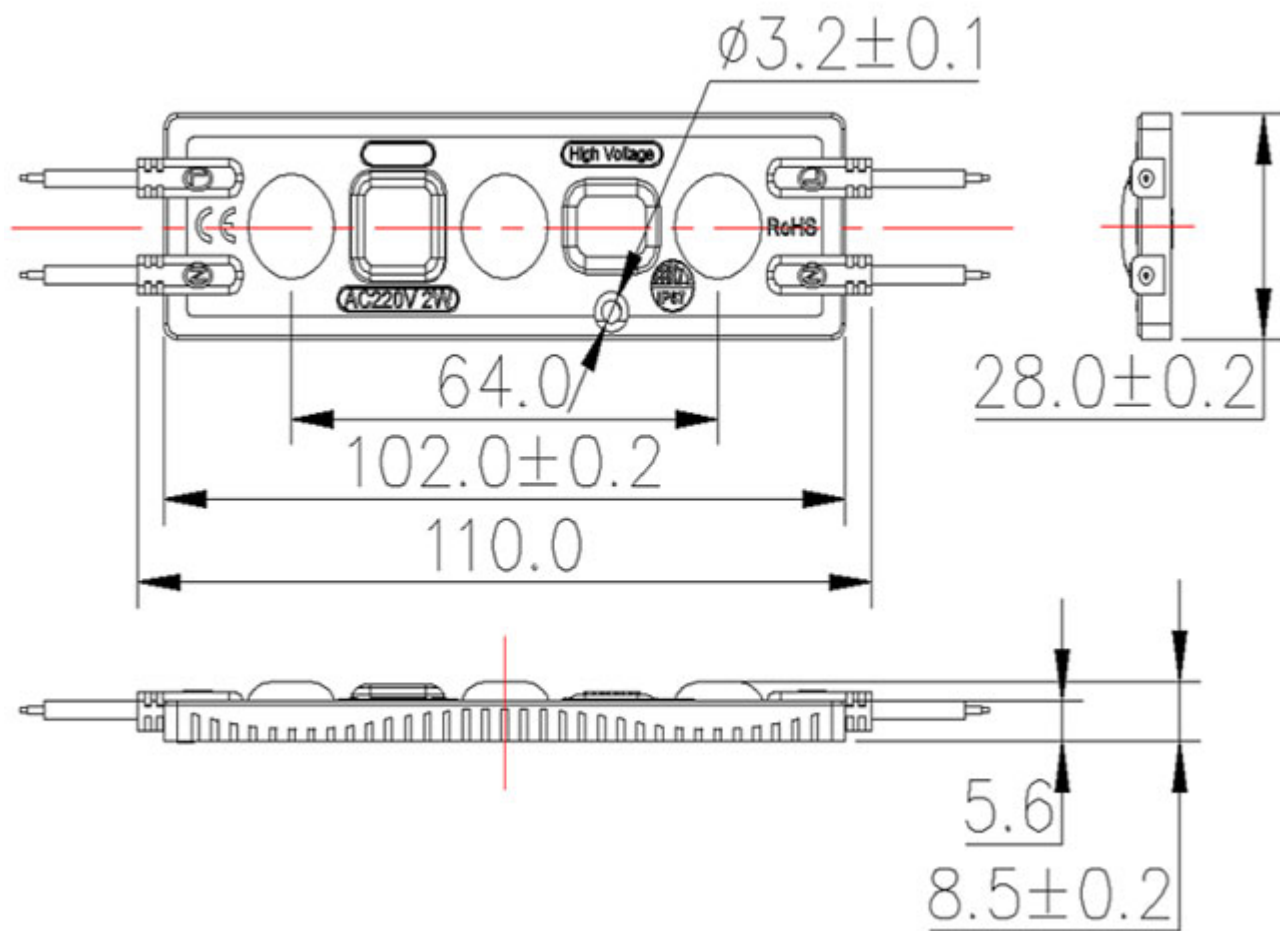
1. The application of high quality light source module, with high brightness, color uniformity, characteristics of antistatic ability etc..
2. AC100V-110V/60Hz power supply, the power factor of 0.92 or more, effectively reduce the power loss and improve the efficiency of the power grid.
3. Appearance, configuration of 155 degree lens cloth lamp using fewer lighting uniformity.
4. Circuit design comes with constant current, over temperature, short circuit protection function.
5. The module uses the fireproof material, flame retardant grade can reach U94V-0, protection grade IP67.
6. To the power module, wireless loss, no pressure drop, single lamp can be cut, easy to install fast.
7. The product through the CE, RoHS, LM80, IP67 and other certifications. Application sites: suitable for 10-35cm advertising signs, advertising light boxes, etc..

Details:

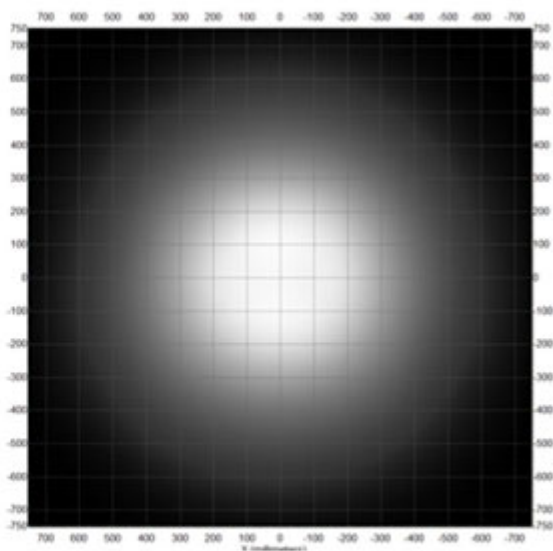
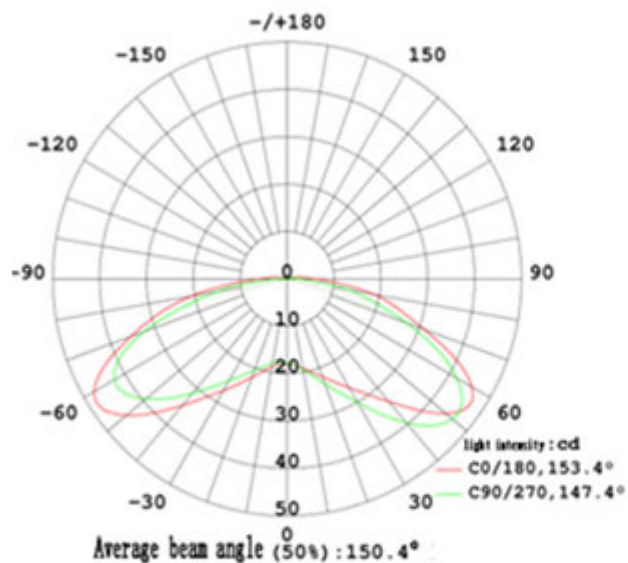




Product size(mm):

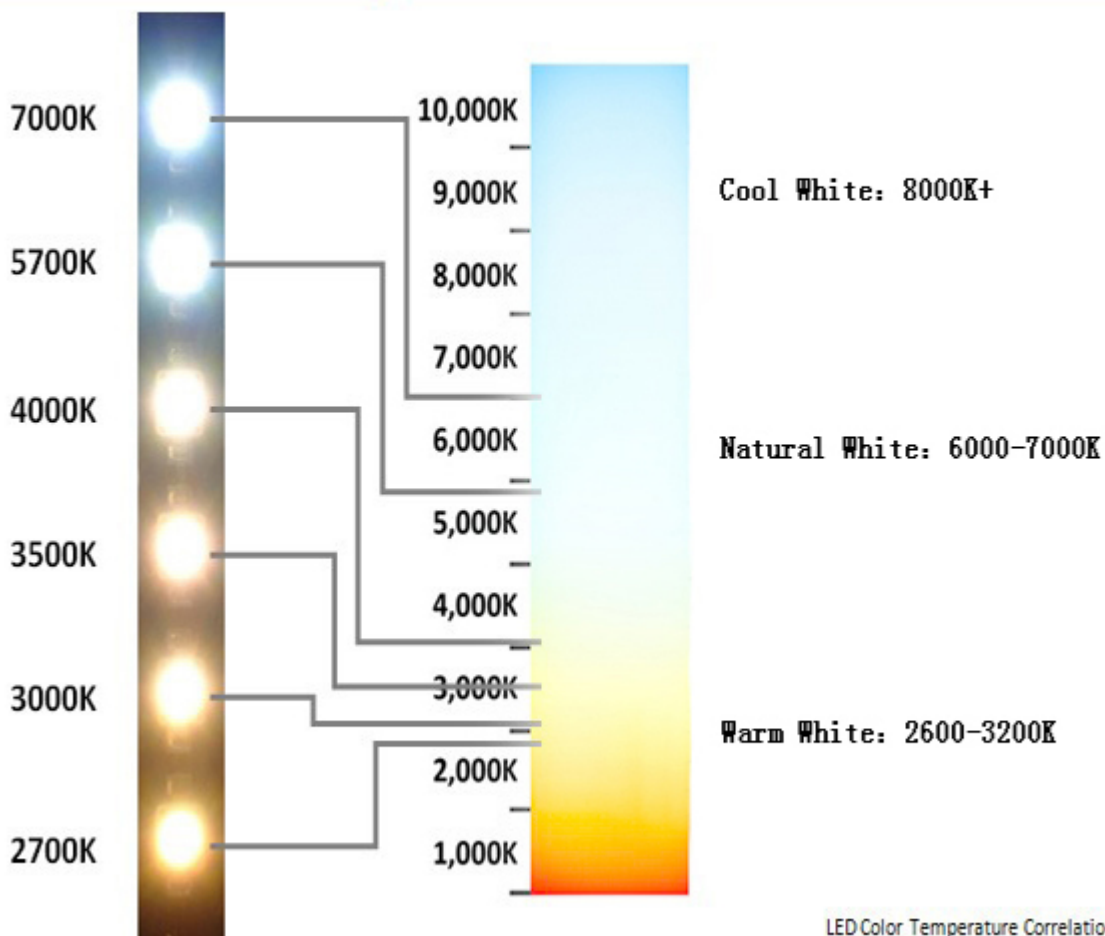


Distribution curve flux and Light spot image:



Basic LED Reference Example

Kelvin Color Temperature Scale Chart



LED Color Temperature Correlation Example

**Usages:**

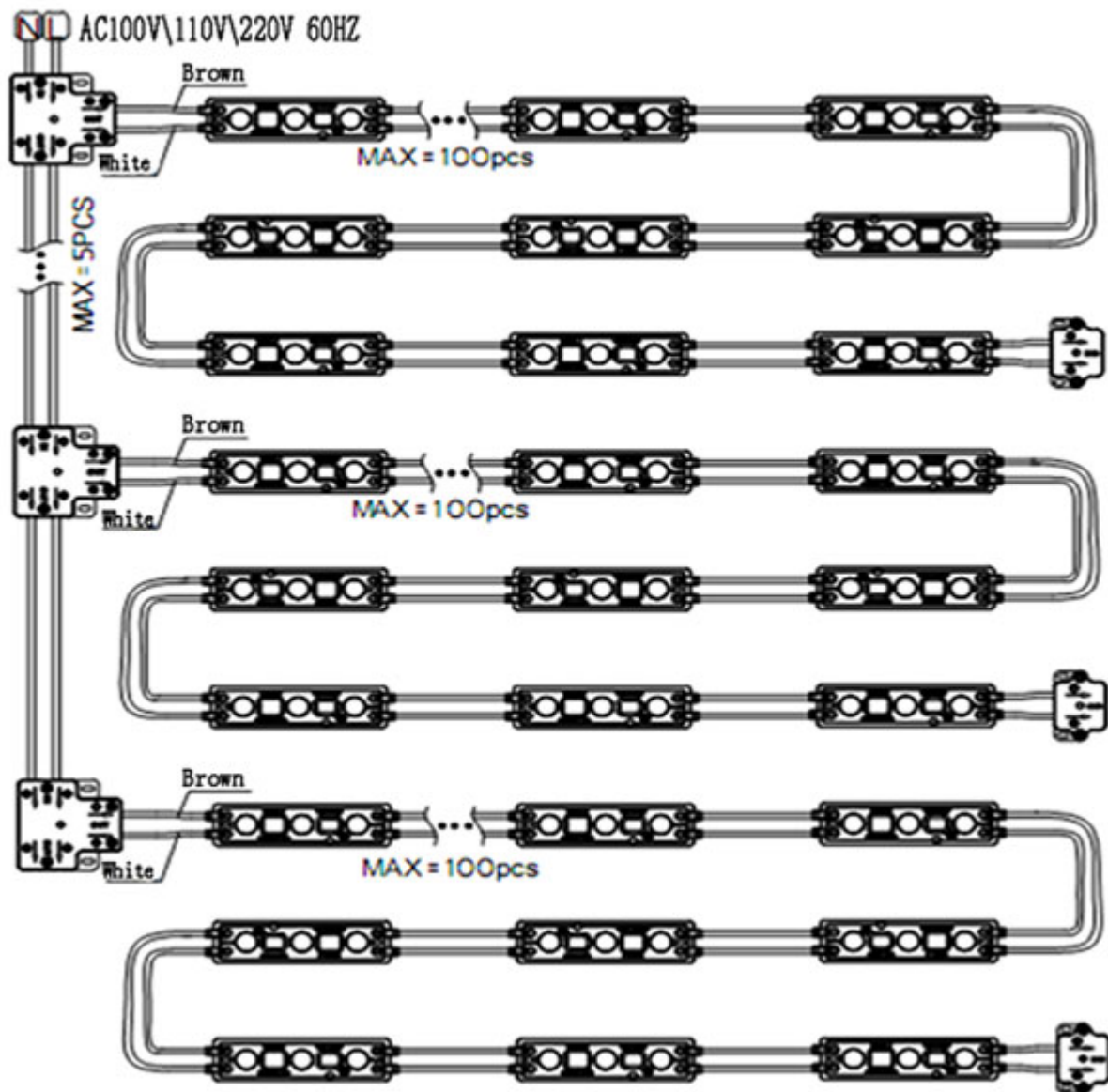
Please download our pdf file to learn more.

Product installation and use should be noted:

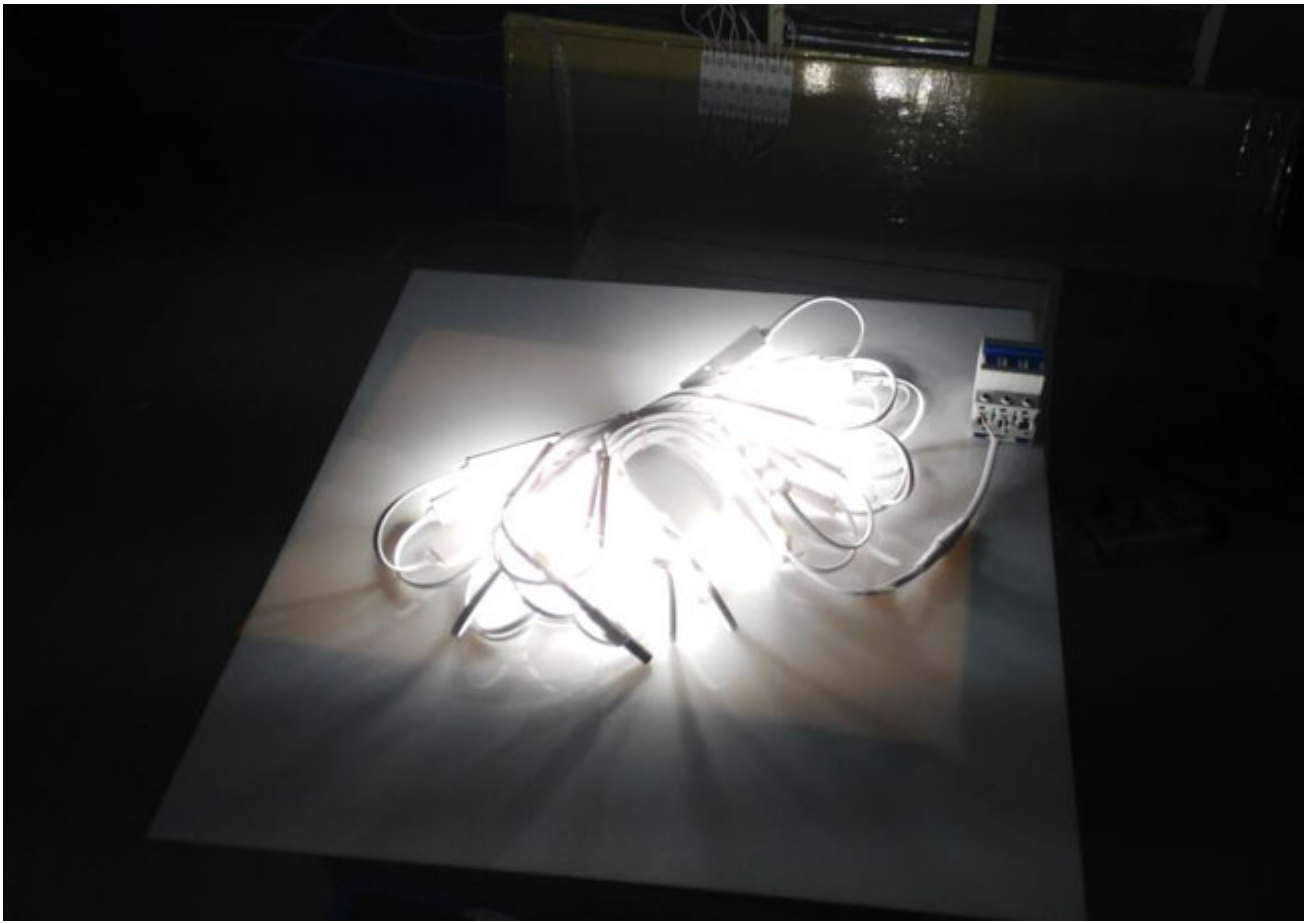
1. Module single lamp can be cut, the work of AC voltage: AC100, AC110V, AC220V, 50/60HZ.
2. Power line using 2x1.5mm above empty cable (according to the load current power line selection), if the module power line had to be lengthened to choose the wires of 0.75mm above it, in order to avoid overload leads to power cord fever, lead to adverse consequences.
3. When the connection module short, first with oblique mouth clamp center cut two module of power line, decortication 30mm or so, peel wire 10mm and the corresponding color (red and white line is connected with a live wire L, the white line is connected to the zero line n) wire twisted into a stock, then the special waterproof tape insulation waterproof processing, final inspection power wiring head guide continuity and reliability, be the unarmed cannot supply line from pull the wiring head that is appropriate.
4. Module installed first module at the bottom of the gum from the paper tore affixed to or advertising light boxes mark preliminary fixed, then the 1 single ST2.5x10mm tapping screw locking reinforcement, the module both sides of glass glue fixed.
5. The end of the module is not connected to the module, the use of the special waterproof cap which we need to support.
6. The standard module cascaded 50PCS, maximal cascaded 100PCS, do not avoid excessive connection, line load current is too large and damaged products.
7. If the module is used outdoors, it is necessary to lock the nut in the terminal in the terminal interface, otherwise it will affect the waterproof effect.
8. Module can not be completely exposed in the outdoor use, touch not electrified, live working, module cut wire, thread cannot be completely naked, must do waterproofing treatment, to prevent electric shock.

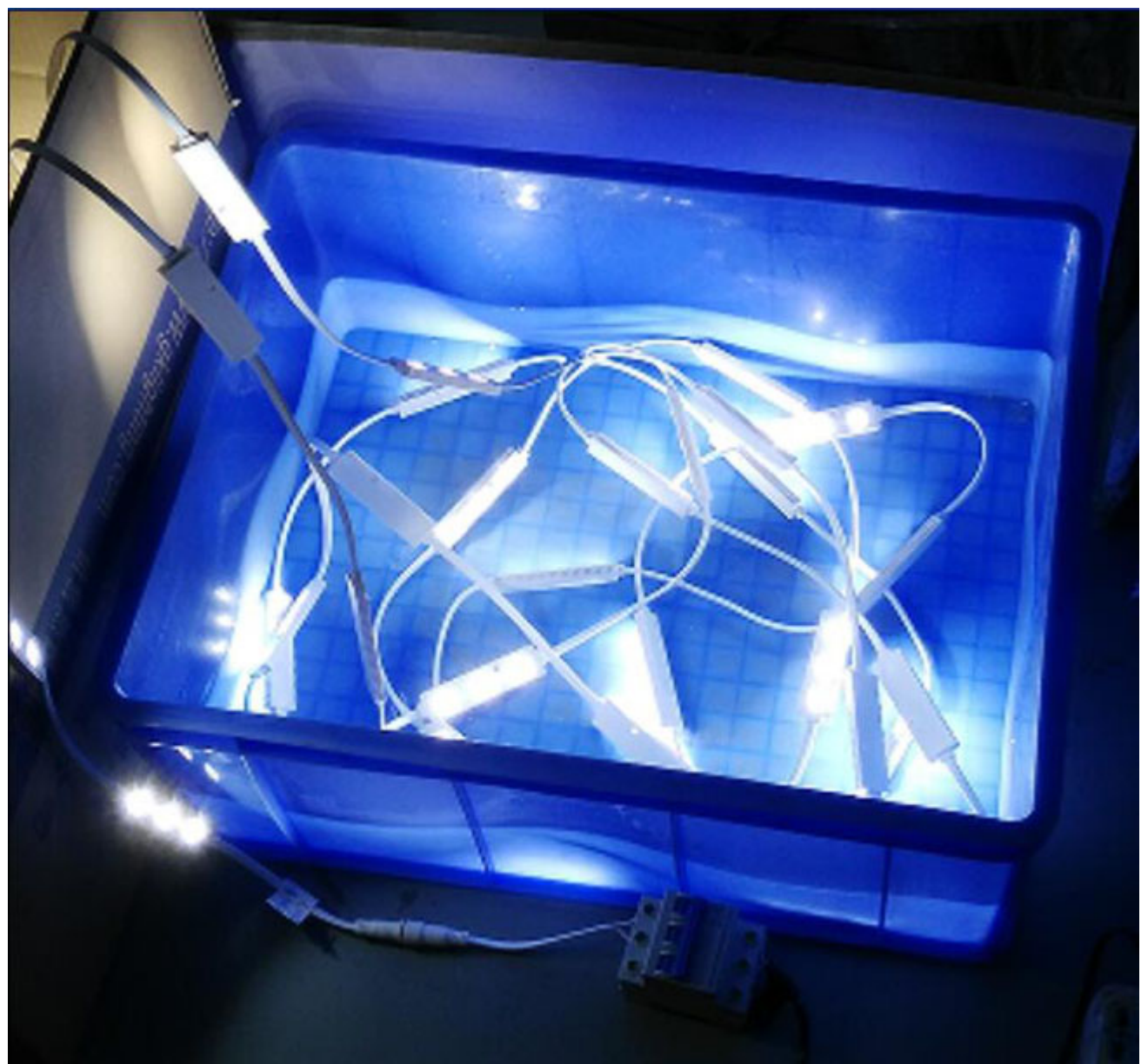
Note: this product is forbidden to work at the non selected voltage and to ensure that the work is at the selected voltage 50/60HZ

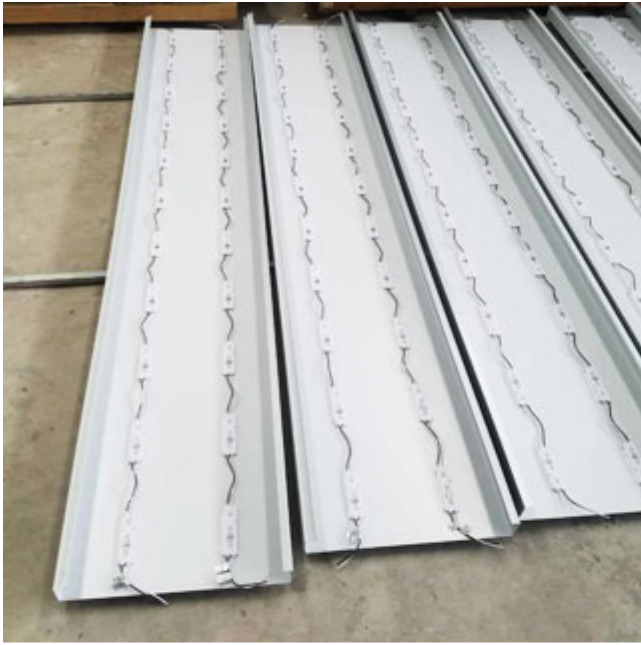
Installation diagram:

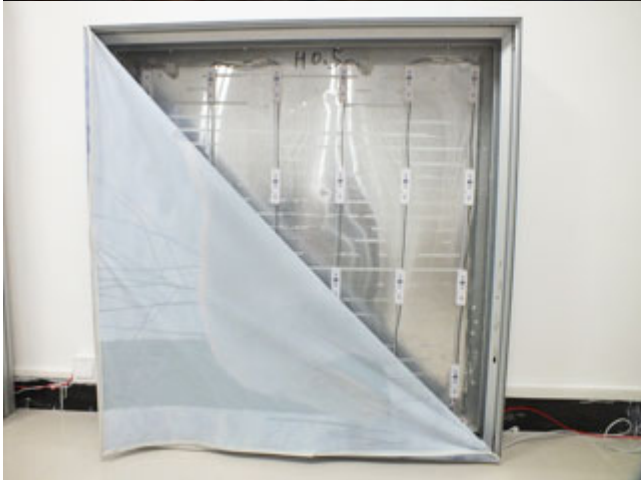


Application:











Quality Report:

ZERTIFIKAT ♦ CERTIFICATE ♦ 认证证书 ♦ CERTIFICADO ♦ CERTIFICAT

Attestation of Conformity
No. E8A 16 10 97308 002

Holder of Certificate: Shenzhen GK Lighting Co., LTD.
SF, Block F
Guancheng Low-carbon Industrial Park
Hedi Road, Gongming Town
Guangming New District
518106 Shenzhen
PEOPLE'S REPUBLIC OF CHINA

Name of Object: LED Module
(Hi Voltage LED Injection Module)

Model(s): MFW8A3D

Description of Object:
Rated Voltage: 220VAC
Rated Frequency: 50/60Hz
Rated Power: 22.5W

Tested according to:
EN 55015:2013/A1:2015
EN 61547:2009
EN 61000-3-2:2014
EN 61000-3-3:2013

This Attestation of Conformity is issued on a voluntary basis according to the Directive 2014/53/EU relating to electromagnetic compatibility. It confirms that the listed apparatus complies with all essential requirements of the directive and is based on the technical specifications applicable at the time of issuance. It refers only to the particular sample submitted for testing and certification. See also notes overleaf.

Test report no.: 687421639301

Date: 2016-10-24
(Paul Yu)

CE After preparation of the necessary technical documentation as well as the EU declaration of conformity the required CE marking can be affixed on the product. That declaration of conformity is issued under the sole responsibility of the manufacturer. Other relevant EU-directives have to be observed.

Page 1 of 1

TÜV SÜD Product Service GmbH · Zertifizierungsstelle · Röhrenstraße 65 · 80329 München · Germany

TÜV

ZERTIFIKAT ♦ CERTIFICATE ♦ 认证证书 ♦ CERTIFICADO ♦ CERTIFICAT

Attestation of Conformity
No. N8A 16 10 97308 001

Holder of Certificate: Shenzhen GK Lighting Co., LTD.
SF, Block F
Guancheng Low-carbon Industrial Park
Hedi Road, Gongming Town
Guangming New District
518106 Shenzhen
PEOPLE'S REPUBLIC OF CHINA

Product: LED Module
(Hi Voltage LED Injection Module)

Model(s): MFW8A3D

Parameters:
Rated Voltage: 220VAC
Rated Frequency: 50/60Hz
Rated Power: 22.5W
Method of Installation: Built-in
Lc: 50°C
Lamp Classification: Exempt group

Tested according to:
EN 62031:2008/A2:2016
EN 62471:2008

This Attestation of Conformity is issued on a voluntary basis according to the Low Voltage Directive 2014/35/EU relating to electrical equipment designed for use within certain voltage limits. It confirms that the listed equipment complies with the principal protection requirements of the directive and is based on the technical specifications applicable at the time of issuance. It refers only to the particular sample submitted for testing and certification. See also notes overleaf.

Test report no.: 681401551601


Date: 2016-10-13
(Taylor Yao)

CE After preparation of the necessary technical documentation as well as the EU declaration of conformity the required CE marking can be affixed on the product. The declaration of conformity is issued under the sole responsibility of the manufacturer. Other relevant EU-directives have to be observed.

Page 1 of 1

TÜV SÜD Product Service GmbH · Zertifizierungsstelle · Röhrenstraße 65 · 80329 München · Germany

TÜV



Technical Report No. 68.140.16.420.01
Dated 2016-10-11

Client: Name: Shenzhen GK Lighting Co., LTD.
Address: 5F, Block F, Guancheng Low-carbon Industrial Park, Hedi Road, Gongming Town, Guangming New District, 518106 Shenzhen, PEOPLE'S REPUBLIC OF CHINA
Contact person: Mr. Liu

Manufacturing place: Manufacturer's name: same as client
Address: same as client
Factory's name: same as client
Address: same as client

Test subject: Product: Hi Voltage LED Injection Module
Type: MFWSA3D

Test specification: According to client requirement
IP67 test according to clause 9.2.2 & 9.2.6 of EN 60598-1:2015

Purpose of examination:

- ☐ inspection according to specified requirements to realize the conformity with the Produktsicherheitsgesetz -ProdSG, version Nov 08, 2011
- ☐ inspection according to specified requirements to realize the observance of the protection aims of the following EC directives:
 - ☐ LVD directive 2014/35/EU
 - ☐ EMC directive 2014/53/EU
- ☒ Test according to the test specification

Test result: The test results show that the presented product is in compliance with the specified requirements

This technical report may only be quoted in full. Any use for advertising purposes must be granted in writing. This report is the result of a single examination of the object in question and is not generally applicable evaluation of the quality of other products in regular production.

Project No: 68.140.16.420.01
 Rev.: 02
 Date: 2016-10-11
 Page: 1 of 8

TÜV SÜD Certification and Testing (China) Co., Ltd.
 Shenzhen Branch
 Building 128/13, Zhikang Wisdomland Business Park
 Hantao Checkpoint Road 2, Nanshan District 518052
 Shenzhen, China
<http://www.tuv-sud.com>

Tel.: +86 755 8828 6996
 Fax: +86 755 8828 5288



Technical Report No. 68.164.15.1064.01
Dated 2016-10-24

Client: Shenzhen GK Lighting Co., LTD

Address: 5F,Block F, Guancheng Low-carbon Industrial Park, Hedi Road, Gongming Town, Guangming New District, Shenzhen, China.

Attn: Mr. Yuan

Sample Description: AC Direct full package injection led module

Model No.: MFWS899D

Reference model No.: MFWS8A3D

Country of origin: CHINA

Exported to: Europe

Location of Testing: TÜV SÜD Certification and Testing (China) Co., Ltd. Shenzhen Branch

Sample Received Date: 2015-12-10

Test Period: From 2015-12-10 to 2015-12-19

Test Requested and Conclusion: Test according to RoHS (Restriction of Hazardous Substances) directive 2011/65/EU on submitted samples

- Heavy Metal (Pb, Cd, Hg and CrVI) Content **PASS**
- Polybrominated Biphenyls (PBBs) and Polybrominated Diphenyl Ethers (PBDEs) Content **PASS**

Test Result: Refer to the following page(s)

Remark: The result relates only to the items tested.

This technical report may only be quoted in full. Any use for advertising purposes must be granted in writing. This report is the result of a single examination of the object in question and is not generally applicable evaluation of the quality of other products in regular production.

Project No: 68.164.15.1064.01
 Rev.: 01
 Date: 2016-10-24
 Page: 1 of 8

TÜV SÜD Certification and Testing (China) Co., Ltd. Shenzhen Branch
 Building 128/13, Zhikang Wisdomland Business Park
 Hantao Checkpoint Road 2, Nanshan District 518052
 Shenzhen, China
<http://www.tuv-sud.com>

Tel.: (86) 755 8828 6996
 Fax: (86) 755 8828 5299

Specifications

AC100-240V High Voltage SMD 2836 IP67 Waterproof LED Module (3 LEDs, 2.5W, L110 x W28 x H8.5mm White Light)

Working voltage:	AC100V / AC110V / AC220V
Power:	2.5W
Luminous flux:	215lm
Luminous angle:	155°
Power factor:	>0.92
Number of LED:	3PCS
Color temperature:	6500-7000K / 8000-10000K
Effect of light:	88lm/w
Protection level:	IP67
Appearance size:	110 x 28 x 8.5mm(4.33"x 1.1"x 0.33")
Appearance color:	White ABS
Connecting wire material:	White sheathed wire
Weight(100PCS):	3250g

Standard cascade:	100PCS/String
Fixed screw:	M3 self tapping screws
Working temperature:	-20~55°C
Storage temperature:	-40~80°C
Warranty period:	5 years

Lamp Parameters

LED type:	SMD 2836
Luminous angle:	120°
Service life:	>30000H
Color rendering index:	>80
LED color temperature:	6500-7000K / 8000-10000K



Copyright © 1999-2012 by Beijing ChinaSigns Information Company Limited All Rights Reserved.

Email:info@sign-in-china.com Tel:+86 132 6410 3286 www.sign-in-china.com