



20" x 39" Digital Manual Heat Press Machine

Item Code: HTM-500THA



FOB Price: **\$2,172/set**

Mini Order: 1 set

Shipping Weight: ★★★★★

Average Rating: 462.0lb (210kg)

[Inquire Now](#)

Overview

Characteristics:

- . Large format, it's suitable for expansive media.
- . Accurate time and temperature display.
- . Enough output power for convenient using.
- . Great work is well done because of heating evenly distributed.
- . Delicate workmanship is accepted by most customers.

Description:

The Heat Press Machine is large format in manual type, so it's suitable to transfer large objects. This is a professional machine for large textiles. Enough output power is convenient. The comfortable pressure comes from `one` more pressure adjust knob. You can twist the knob to the right setting when operating. Two separate digital controllers show time and temperature accurately and it's easy to check. Great value is generated because of the fine workmanship, such as good silicon pad, fine heating panel, reasonable machinery structure and delicate out appearance.

Related Products:



Epson Printer



heat transfer blanks



Sublimation Ink



heat tranfer paper \ film

Application:

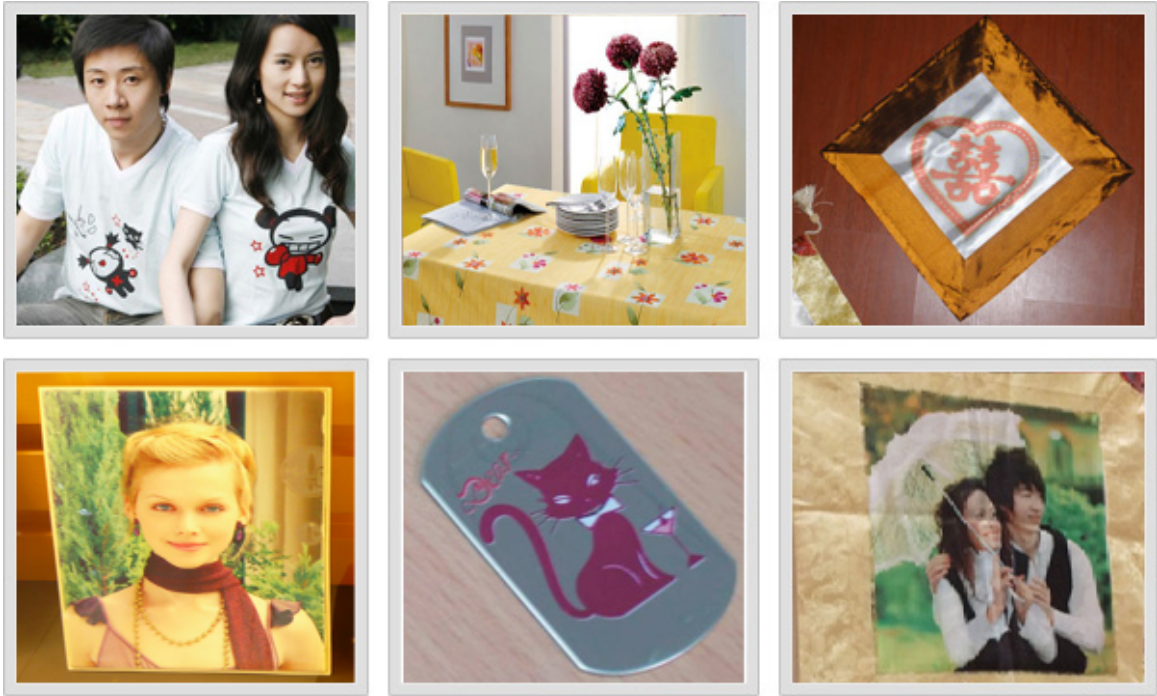
The Large Format Heat Press Machine is professional for transferring images expansive media, such as table cloth, T-shirts, pants and others which are with flatsurface made of textile, chemical fibre or cotton materials, and metal sheet, adorment, etc.

Voltage: 220/380V
Temprature Range: 0-260?
Time Range: 0-999sec
MOQ: 1set
Certificate: CE

Guarantee & Aftersales Service

Comprehensive guarantee for one year except the wearing parts.
24-hour technical support by email or calling.
User-friendly English manual for machinary using.

Samples:



Notice:
The machine color is variable, so it's random when you buy the machine. Certainly, you can choose the color we have made but it needs time to finish if it's not in stock. Also, you can customize the color you like but need extra cost and large order.

Details

Certificate	CE
Gross Weight	462.0lb(210kg (Wooden Case))
Net Weight	286.0lb(130kg)
Packing Size	37.4"×43.3"×25.6"(950×1100×650mm)
Time Range	0-999sec
Temprature Range	0-260?
Voltage	220/380V (Three-phase Voltage)
Working Size	19.7"×39.4"(500×1000mm)

Power	6000
-------	------



Copyright © 1999-2012 by Beijing ChinaSigns Information Company Limited All Rights Reserved.

Email:info@sign-in-china.com Tel:+86 132 6410 3286 www.sign-in-china.com