



Dual-axis Metal Channel Letter Angle Bender Bending Tools

Item Code: CS-DMCLAB-002



FOB Price: ???8 380/????????

Mini Order: 1 ????????

Shipping Weight: ★★★★★

Average Rating: 16.5lb (7.5kg)

[Inquire Now](#)

Overview

Description:

- This metal letters bending tool is made to solve problems of time-consuming and laborious in manual bending metal letters, and has effectively solved problems existed in bending metal sheet.
 - It can bend metal sheets quickly and accurately (It will attain the best effect if you use with CS-MBBT-001 metal slot bending machine), save time and effort, and improve production efficiency.
- Updated product, zinc plated silver color.

Features:

- Two axes: one for adjustment of plywood gap, and the other for bending angles;
- Imitation of pneumatic angle bending machine, with two flexible boards, this metal letters bending tool can better adjust the plate space, bend angles for different materials;
- When bending iron stainless steel, the bending material can be guaranteed not to fall automatically by adjustment of plate space;
- This metal letter bender can fasten materials firmly, and thus can bend more perfect and accurate angles.
- It is easy to install and operate. Small size.




Specification:

Maximum Process Thickness: 2mm (0.079")
Maximum Bending Materials Width: 100mm (3.9")
Machine Size: 210mm x 140mm x 150mm (8.3" x 5.5" x 5.9")
Machine Weight: 5.05kg

Tips:

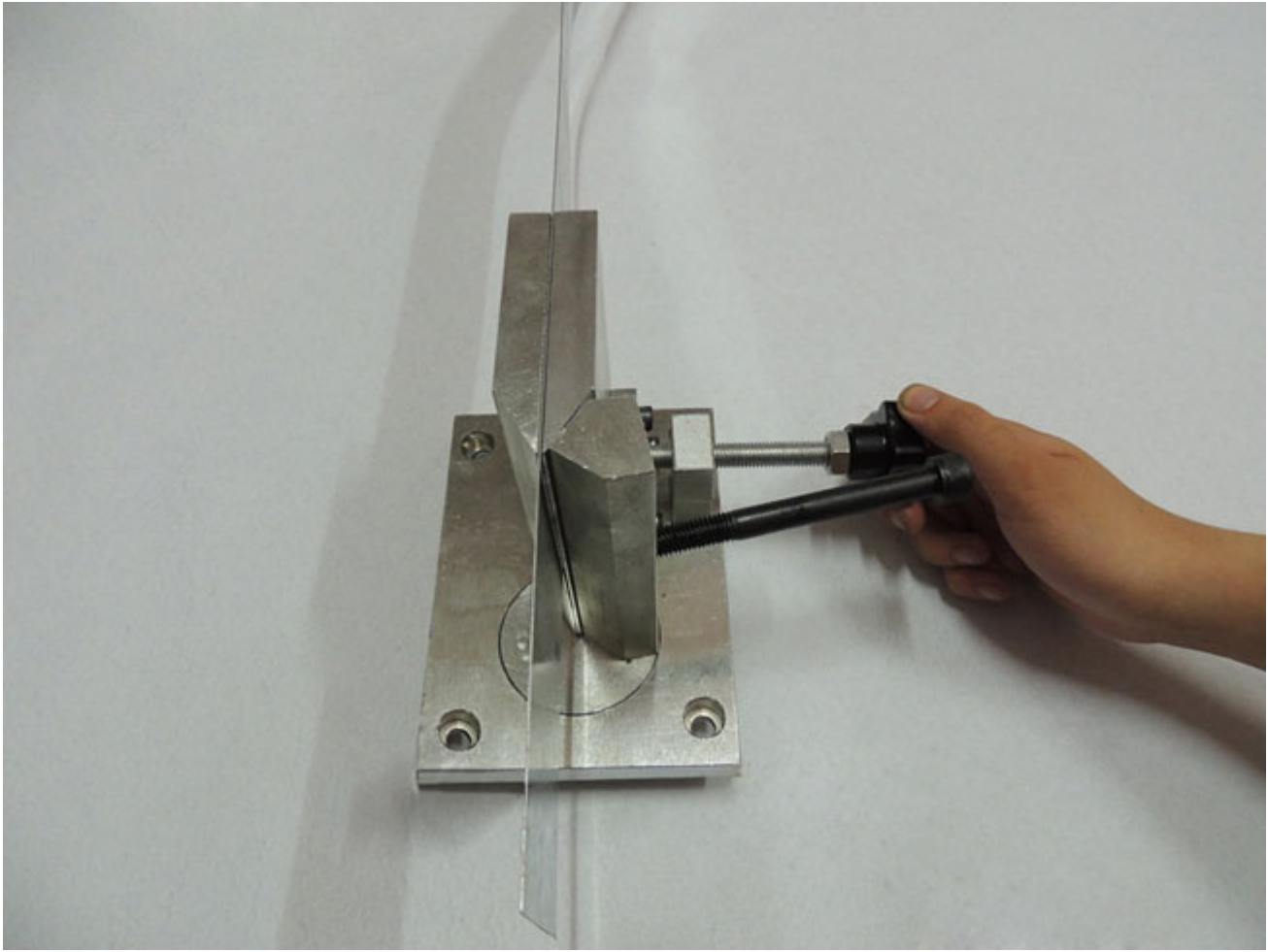
- This metal letter angle bender must be fixed in the usage to improve efficiency due to many operations;
- This metal letter bending tool adopts screw rod clamp type, you'd better not fix the metal too tight, otherwise will reduce the tool's service life;
- If you want to bend thicker metal or you need attain standard 90 degree angle, please make a slot at first with our CS-MBBT-001 metal slot bending machine;
- If the distance between two angles is less than 10cm, but plus the distance between the third angle is more than 10cm, you can bend the third angle first, and then bend the second angle, so that you can avoid in-operation situation.

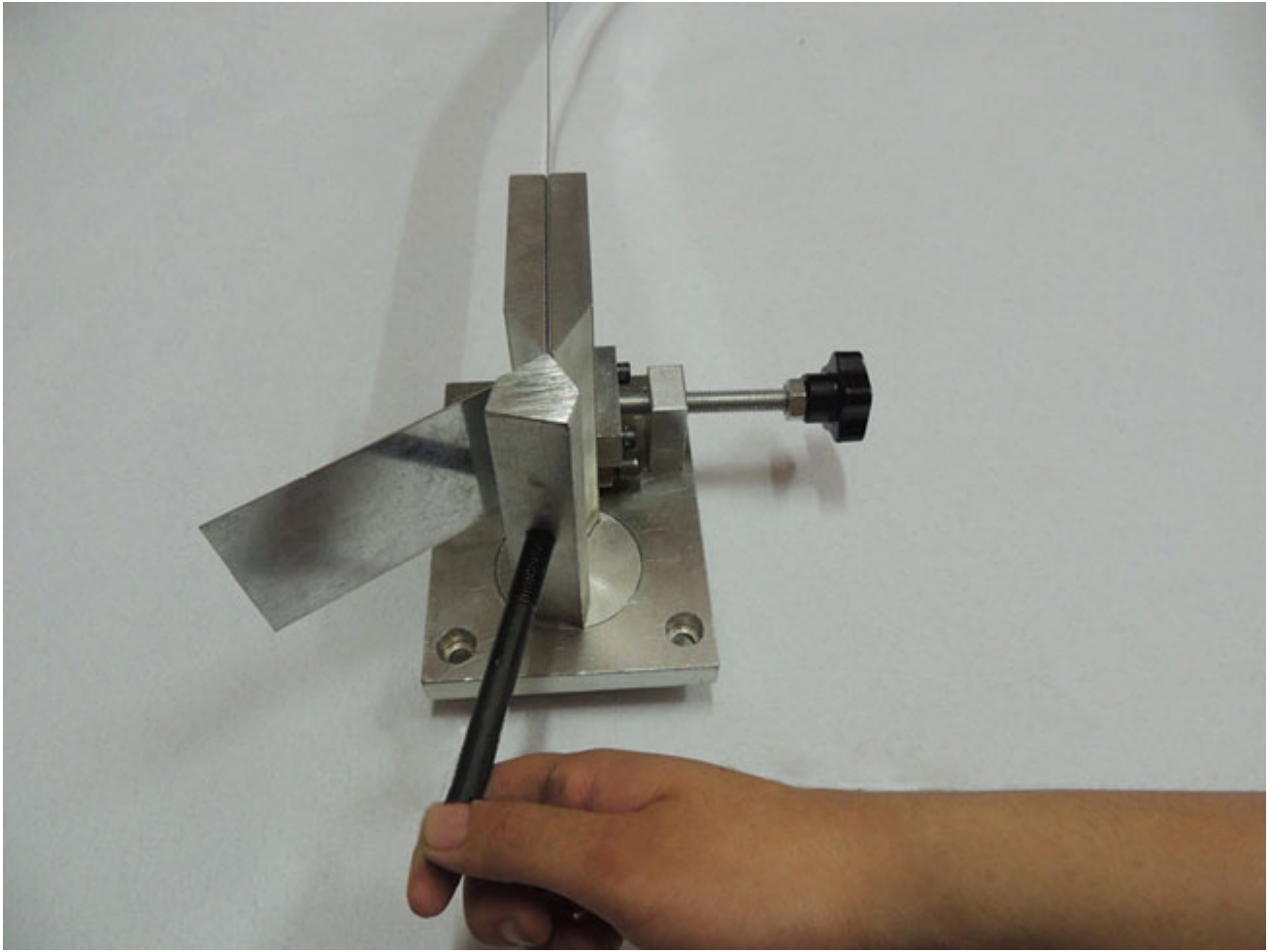
Comparison:

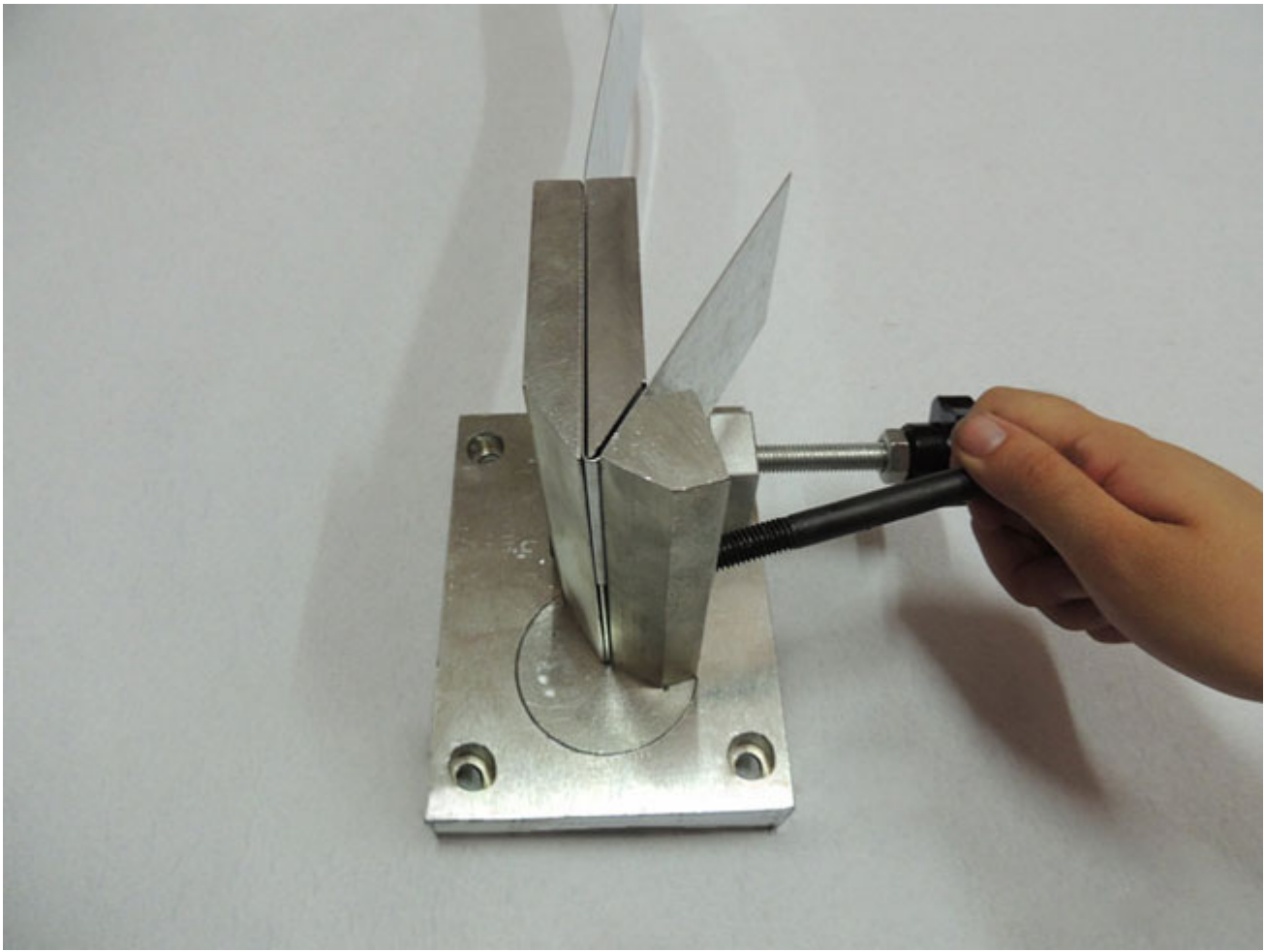
		
Dual-axis Metal Channel Letter Angle Bender Bending Tools	Mini Metal Letters Angle Bender Bending Tools	Pneumatic Dual-axis Metal Letter Angle Bender Machine
Maximum Working Thickness: 2mm	Maximum Working Thickness: 1.5mm	Maximum Working Thickness: 1mm
Mainly used for bending aluminum material edges.	Mainly used for bending steel material edges.	Mainly used for bending aluminum material edges.
Machine Weight is 5.05kg	Machine Weight is 1.65kg	Machine Weight is 6.65kg
Plate space can be adjusted, which makes the bending material not to fall automatically when bending iron stainless steel. You can fasten materials firmly and bend more perfect and accurate angles.	The plate space is fixed, width is 1.5mm	Plate space can be adjusted, which makes the bending material not to fall automatically when bending iron stainless steel. You can fasten materials firmly and bend more perfect and accurate angles.
Price is medium	Price is low	Price is relatively high
Can make a 10cm distance between two angles	Can make a 10cm distance between two angles	Can bend many ranges of edges, and can make a 5cm distance between two angles
Manual operation, dual-axis design, labor saving.	Manual operation, small size and light in weight	Pneumatic operation, with a foot switch, labor saving

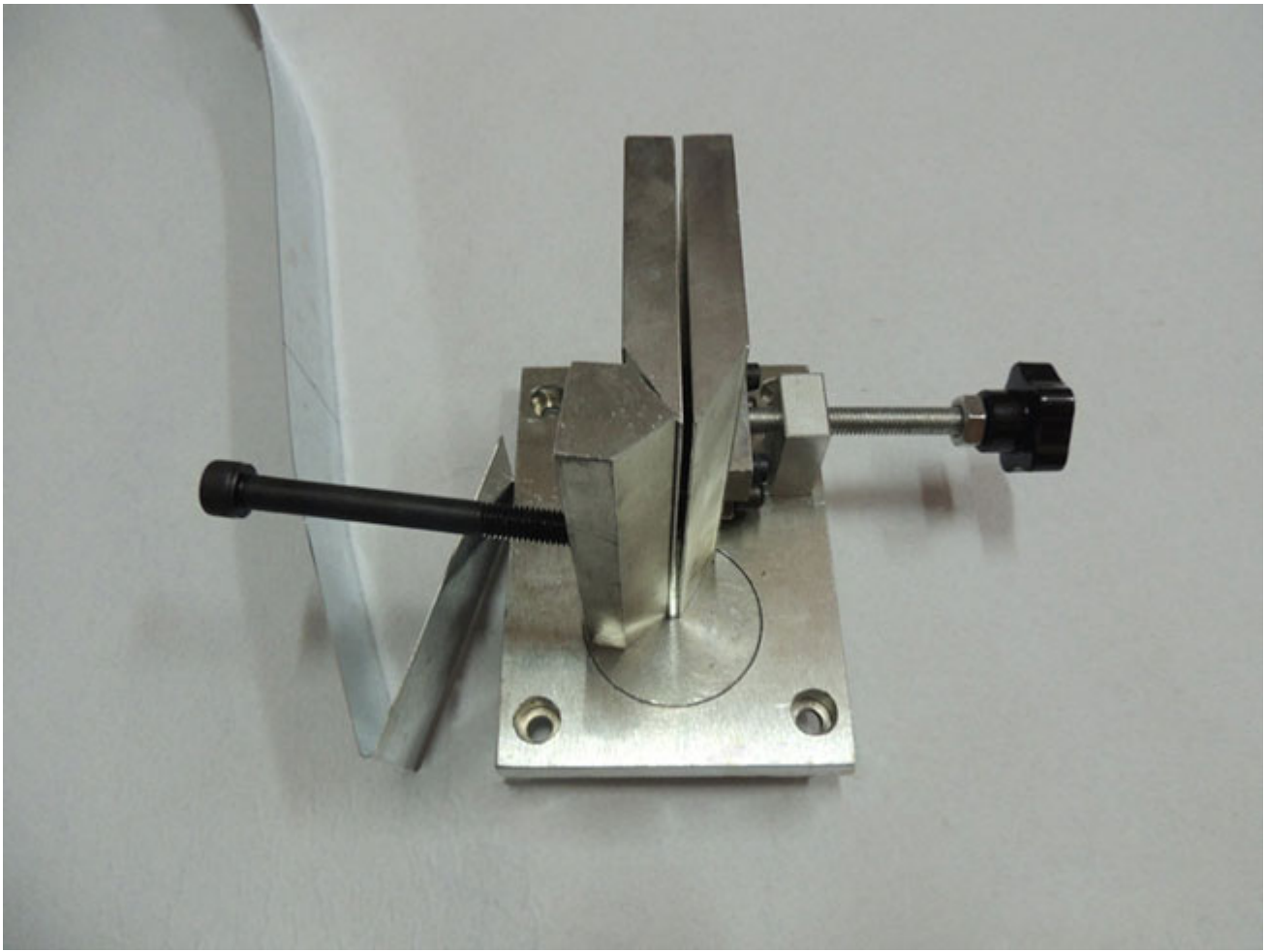
Application:

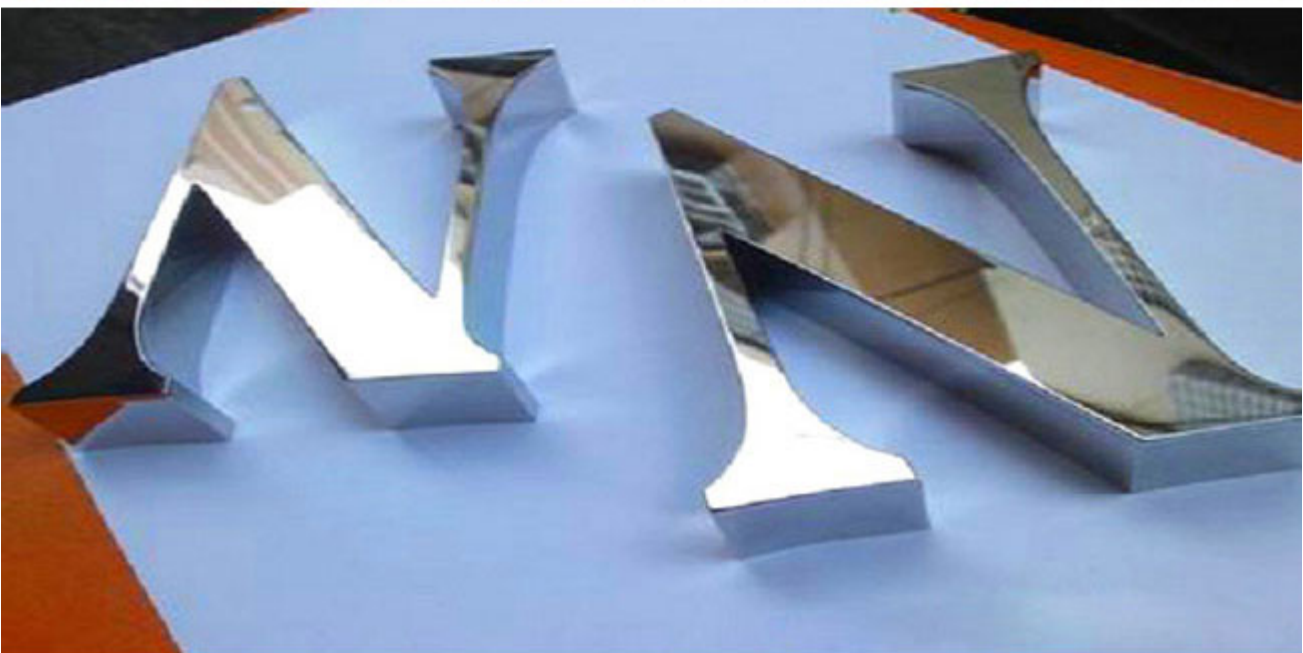
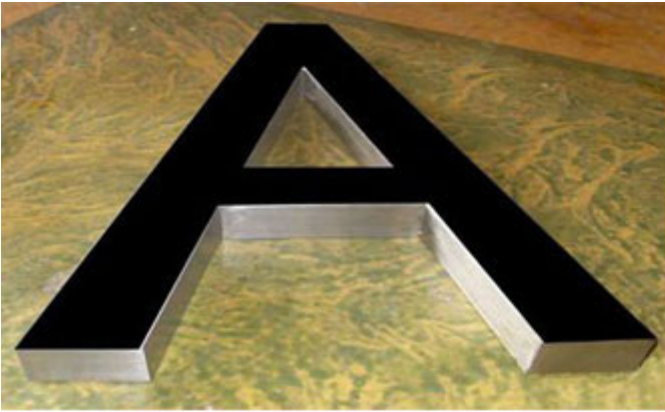
This metal channel letter bending tool can be used for bending angles of metal sheet, stainless steel, aluminum extrusions and various metal strips.











Specifications

Model	CS-DMCLAB-002
Maximum Process Thickness	2mm (0.079")
Maximum Bending Materials Width	150mm (3.9")
Machine Size	210mm x 140mm x 150mm (8.3" x 5.5" x 5.9")
Machine Weight	5.05kg



Copyright © 1999-2012 by Beijing ChinaSigns Information Company Limited All Rights Reserved.

Email:info@sign-in-china.com Tel:+86 132 6410 3286 www.sign-in-china.com