



130W CO2 Laser Tube

Item Code: CS-LT-W6

Mini Order: 1 pc

Average Rating: 1b (kg)

[Inquire Now](#)



Overview

130W CO2 Laser Tube

Rated power 150w and Maximum power 170w

Maximum 10,000 Hours Life Span

Better Performance

Higher efficiency

Highlights:

Output Power: Its output power can reach 155w. The production process of the tube is standardized, so the output power and output model are guaranteed. (For other laser tube manufacturers: can't provide this product)

Long lifespan: We have catalyst plating in the inner wall of the laser tube. Designing lifespan is 10,000 hours and the warranty is 10 months. (For other laser tube manufacturers: can't provide this product).

Appearance: The tube is sealed by metal material. It is industrial product.

Tube frame: This is exclusive design for Reci laser tube. You can use it to install our laser tubes into the machine to spare the freight cost. This frame is shockproof and makes sure the tube will not move during the transport. (No frame is provided by other manufacturer.)

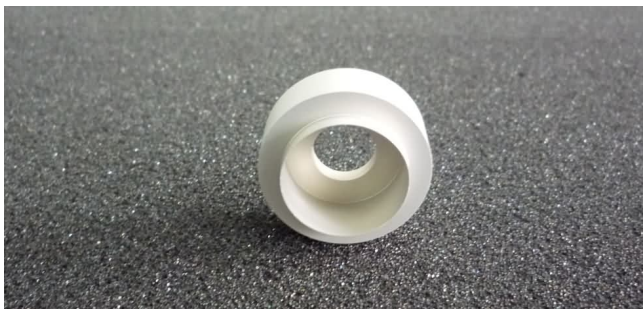
High photoelectric conversion rate: The output power will decrease for less than 2w when the cooling water's temperature is 42°. Its heat productivity is lower than 100w tubes of other brands. (Other brands: The output power decrease rapidly when the cooling water's temperature is 42°)

Auxiliary engraving function: It can compare with 80w laser tubes of other manufacturer. The tube can engrave with 5mA working current when there is still no laser beam in the laser tube. (Other brands: No engraving function)

Warranty: 10 months, international warranty service, Reci charges the freight for exchanging the defect tube. (For others laser tube brands: warranty for 3 months, no international warranty service?)

High performance cost ratio: High output power, high efficiency, and high performance cost ratio.





Specifications

Specifications for industrial CO2 laser tubes

Model	CS-LT-W6
Length	65" (1650mm)
Outer Diameter	780mm (3.15") \pm 2mm
Ignition Voltage	28kv
Operating Current	Test current is 29mA. Maximum working current is 32mA. The running current must be kept below 30mA. The life span can reach 8,000 hours if the current is kept below 28mA.
Power Output	Rated power 150w and Maximum power 170w
Power Stability	\pm 2%

Tags

[CO2 laser tube](#) [reci CO2 laser tube](#) [laser tube](#) [glass laser tube](#) [80W co2 laser tube](#) [100W co2 laser tube](#) [130W co2 laser tube](#) [150W co2 laser tube](#)



Copyright © 1999-2012 by Beijing ChinaSigns Information Company Limited All Rights Reserved.

Email:info@sign-in-china.com Tel:+86 132 6410 3286 www.sign-in-china.com